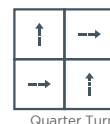


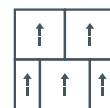
technical specifications

Product Name	Up/Down
Product Description	Textured Loop Pile
Pile Yarn Description	100% Solution Dyed Nylon (Polyamide-PA)
Tile Dimensions	50 cm x 50 cm
Pile Yarn Weight	580g/m ² +/-10%
Total Weight	4330g/m ² +/-10%
Pile Height	4mm +/-10%
Total Thickness	6.5mm +/-10%
Gauge/ends per 10cm	1/10th - 45 stitches
Tufts per m2 / Pile Density	176,850/m ² +/-10%
Backing Description	Accummen™, 75% recycled
Wear Classification	BS EN 1307 Heavy Commercial Use Class 33
Luxury Rating Class	LC2
Flammability	Euroclass Bfl-s1
Underfloor Heating	Suitable for underfloor heating up to 27°C
Castor Chair Rating	BS EN 985 Pass - suitable for continuous use
Hexapod	BS ISO 10361: Method B:2000 3.5 to 4
Static Loading	BS 4939:1987 (2003) Recovery >80% (24hrs)
Dynamic Loading	BS ISO 2094:1999 (2005) Loss <20% (1000 impacts)
Body Voltage Test	BS ISO 6356:2000 <2kV
Colour Fastness To Light	BS EN ISO 105 - B02 Minimum Grade 6
Colour Fastness To Shampoo	BS 1006:UK-TB: 1990 Minimum Grade 4-5
Number Of Tiles Per Box	20 (5m ²)
BREEAM Rating	BREEAM A and A+ ratings across full product range. For specific rating, please refer to www.breeam.co.uk

Recommended Layouts



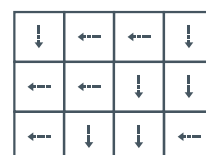
Quarter Turn



Brick



Large Quarter Turn



Parquet



This floor covering was made with renewable electricity



Environmental Profiles Scheme
Certificate Number ENP353



Certificate Number FM01440
BS EN ISO 9001:2008



Statement on level of emission of volatile substances in indoor air posing a toxic threat during inhaling - on a scale from A+ (very low-emission) to C (high-emission)

environmental information

- Burmatex products achieve either A or A+ across all the BREEAM defined building applications
- Burmatex products qualify for SKA as they achieve one or more requested criteria
- All Burmatex carpet/carpet tile ranges are made at its two UK manufacturing sites
- Wherever possible, raw materials are sourced from local suppliers i.e. within 20 miles
- Over 60% of all Burmatex yarn/fibre used is sourced locally
- Over 75% of Burmatex Accummen™ backing comes from recycled materials
- Continuous assessment and improvement of manufacturing process to minimise use of raw materials/power
- All manufacturing waste is recycled and all electricity used is from renewable resources
- All Burmatex products are heavy contract with a 10 year guarantee for maximum useful life
- Certified, Class A+: very-low VOC Emission

LEED® v4 - Burmatex products can contribute towards satisfying the following credits for LEED v4: NC-v4/C1-v4 MRc2/MRc3 (Building product disclosure and optimization - environmental product declarations), MRc3/MRc4 (Building product disclosure and optimization - sourcing of raw materials), EQc1 (Enhanced indoor air quality strategies), EQc2 (Low-emitting materials), EQc6 (Interior lighting - Option 2. Lighting quality (E - H)) and EQc9 (Acoustic Performance). Products are not reviewed under LEED. LEED credit requirements cover the performance of materials in aggregate, not the performance of individual products or brands. For more information on LEED, visit www.usgbc.org/contact

Burmatex Ltd,
Victoria Mills, The Green,
Ossett, West Yorkshire
WF5 OAN, United Kingdom

T +44 (0) 1924 262 525
F +44 (0) 1924 280 033
UK email: projects@burmatex.co.uk
International email: international@burmatex.co.uk
www.burmatex.co.uk

Burmatex reserves the right to improve the specification of all products without prior notification. E&OE

Orders are subject to Burmatex terms and conditions of sale.
See www.burmatex.co.uk/termsandconditionsofsale