

burmatex®

up/down

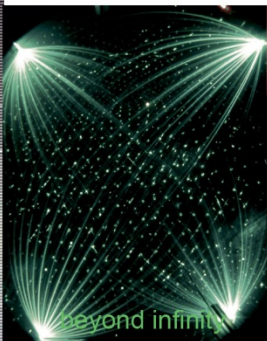
up/down
textured loop pile

burmatex®



see through mesh

Pantone colour planner
Winter 2014/15
From Beyond Pallet



beyond infinity



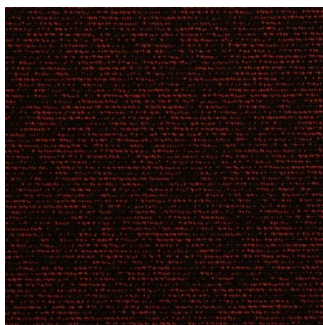
winter silks



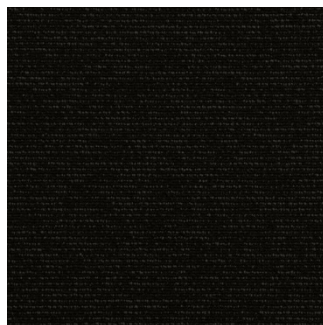
Colour palette - Down



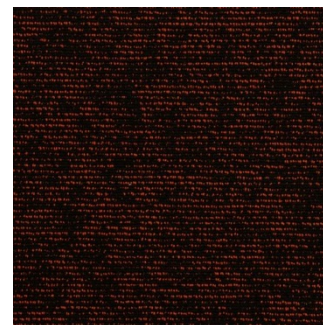
19901 down pink



19902 down red



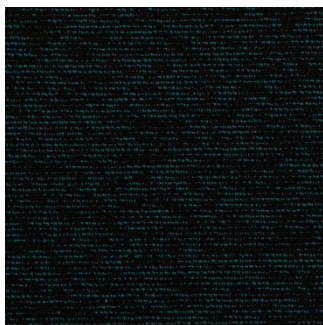
19903 down dark grey



19904 down tomato



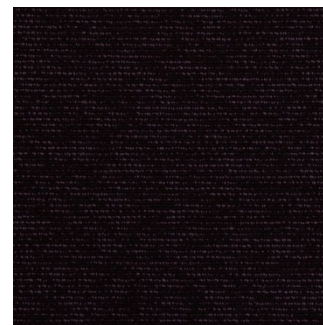
19905 down mocha



19906 down turquoise



19907 down blue



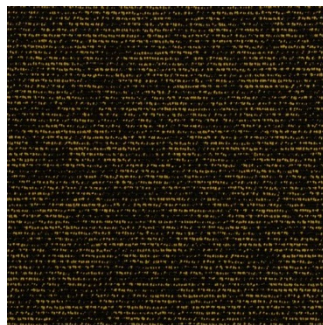
19908 down purple



19909 down emerald



19910 down light grey

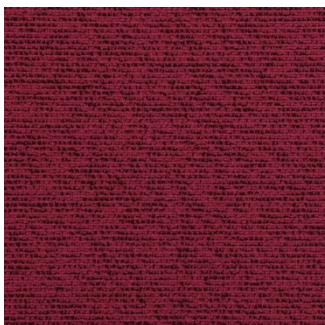


19911 down yellow

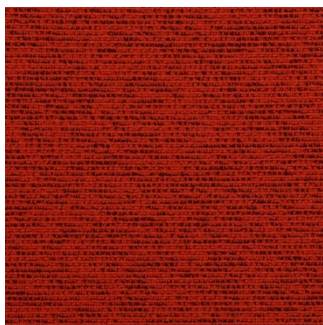


19912 down olive

Colour palette - Up



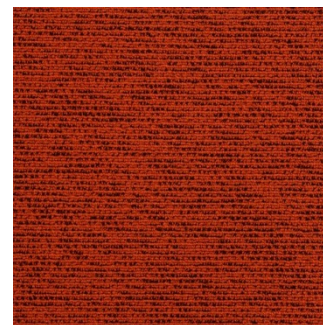
19501 up pink



19502 up red



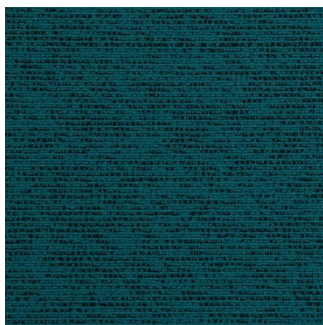
19503 up dark grey



19504 up tomato



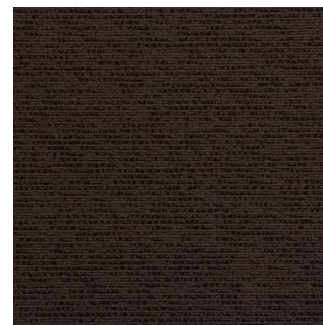
19505 up mocha



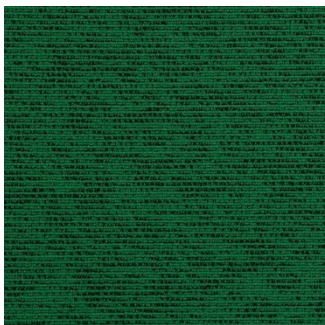
19506 up turquoise



19507 up blue



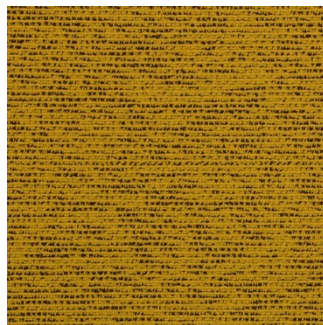
19508 up purple



19509 up emerald



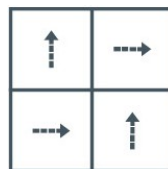
19510 up light grey



19511 up yellow



19512 up olive

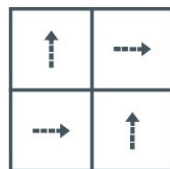


up/down emerald



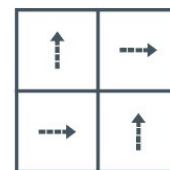


up/down purple



up/down
textured loop pile

burmaterex®

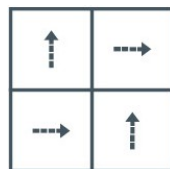


up/down pink with **down** olive and **up/down** dark grey



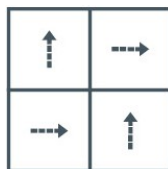


down dark grey with **up/down** olive

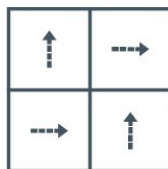


up/down
textured loop pile

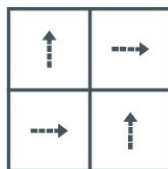
burmatex®



up dark grey with **up/down** pink



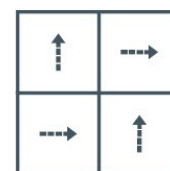
up/down olive with **up** dark grey

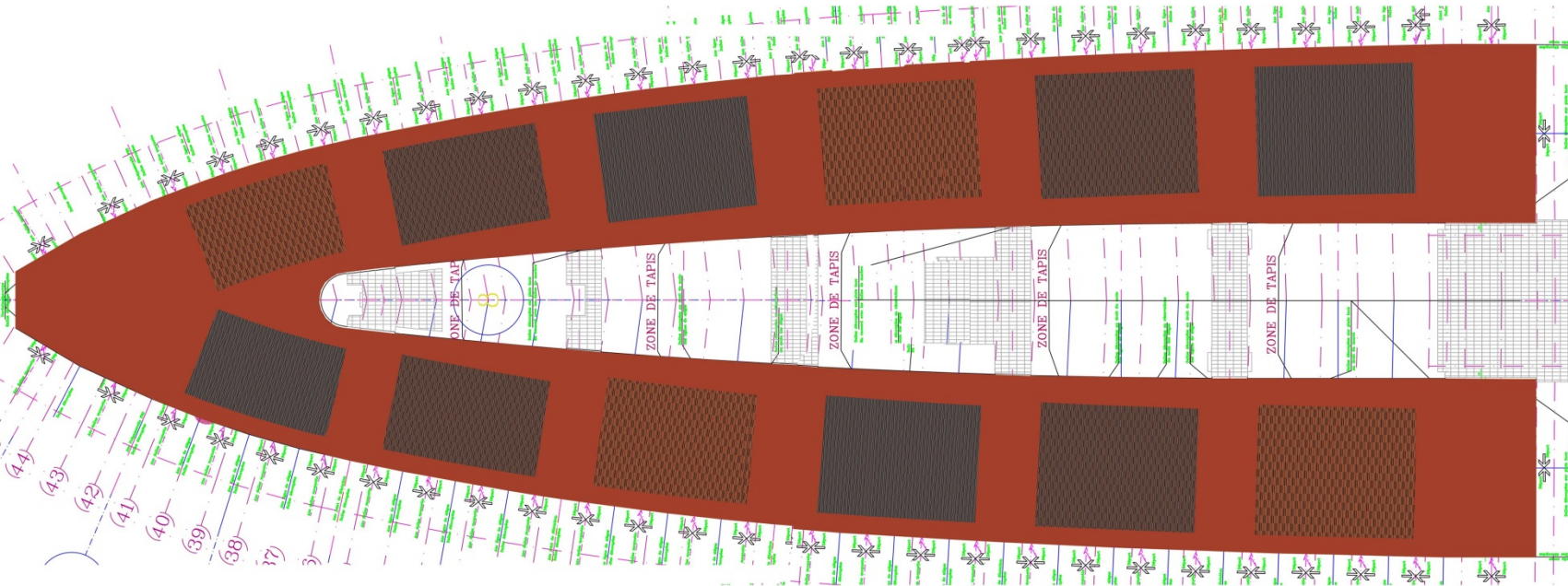


up/down emerald



up yellow with **down** pink and **down** dark grey

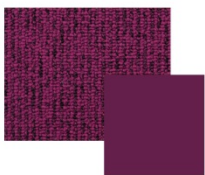
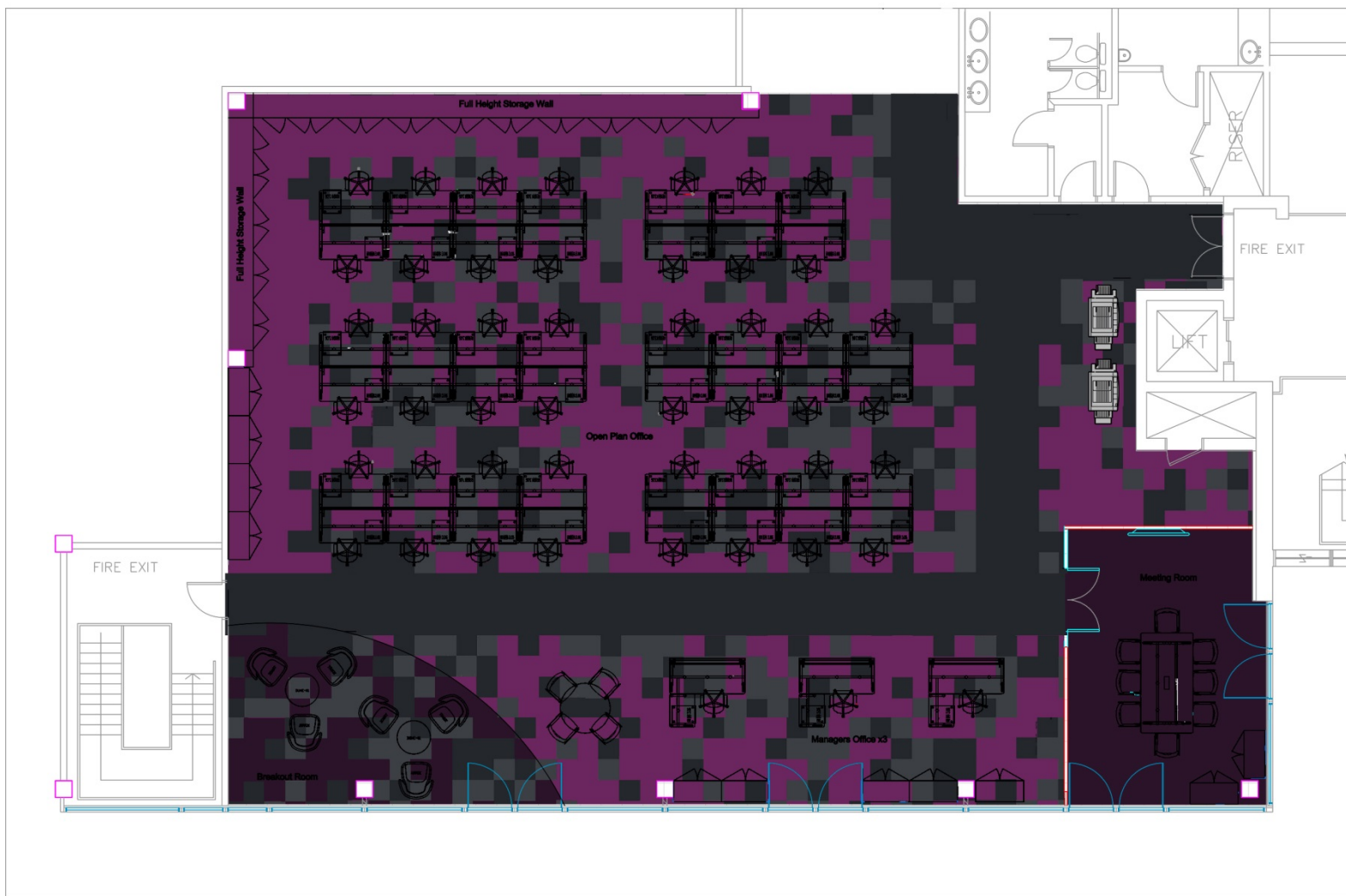




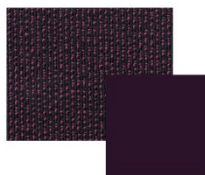
PRODUCT KEY:



BPV-12-066/SCHEME 1A
plan view is not to scale -
for design purposes only



up pink 19501
install quarter turn



down pink 19901
install quarter turn



up dark grey 19503
install quarter turn



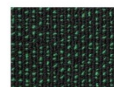
down dark grey 19903
install quarter turn



North Block - Second Floor



down dark grey 19903



down emerald 19909



up emerald 19509



technical specifications

Product Name	Up/Down
Product Description	Textured Loop Pile
Pile Yarn Description	100% Solution Dyed Nylon (polyamide-PA)
Tile Dimensions	50 cm x 50 cm
Pile Yarn Weight	580g/m ² +/-10%
Total Weight	4330g/m ² +/-10%
Pile Height	4mm +/-10%
Total Thickness	6.5mm +/-10%
Gauge/ends per 10cm	1/10th - 45 stitches
Tufts per m2 / Pile Density	176,850/m ² +/-10%
Backing Description	Accummen™, 75% recycled
Wear Classification	BS EN 1307 Heavy Commercial Use Class 33
Luxury Rating Class	LC2
Flammability	Euroclass Bfl-s1
Castor Chair Rating	BS EN 985 Pass - suitable for continuous use
Hexapod	BS ISO 10361: Method B:2000 3.5 to 4
Static Loading	BS 4939:1987 (2003) Recovery >80% (24hrs)
Dynamic Loading	BS ISO 2094:1999 (2005) Loss <20% (1000 impacts)
Body Voltage Test	BS ISO 6356:2000 <2kV
Colour Fastness To Light	BS EN ISO 105 - B02 Minimum Grade 6
Colour Fastness To Shampoo	BS 1006:UK-TB: 1990 Minimum Grade 4-5
Number Of Tiles Per Box	20 (5m ²)
BREEAM Rating	BREEAM A and A+ ratings across full product range. For specific rating, please refer to www.breeam.co.uk

Recommended
Layouts



Quarter turn



07

0338-CPD-1005

EN 14041:2004



This floor covering was made with renewable electricity



Environmental Profiles Scheme
Certificate Number ENP353



Certificate Number FM01440
BS EN ISO 9001:2008



Statement on level of emission of volatile substances in indoor air posing a toxic threat during inhaling – on a scale from A+ (very low-emission) to C (high-emission)

Thank you