

TITAN CANTILEVER METAL GATES

EACH GATE WEIGHT MAX 1000kg

APPLICATION

- ▶ Titan is a high quality, robust and heavy duty cantilever gear for sliding metal gates.
- ▶ Titan is suitable for industrial and commercial use.
- ▶ It is ideal for security and traffic control .
- ▶ It can be used where the road surface is uneven or where the roadway has to be free of rails and channels as there is no track on the ground.
- ▶ Due to its construction, Titan offers security and maximum weather protection as the rollers are located internally within the track.

GATE SPECIFICATION

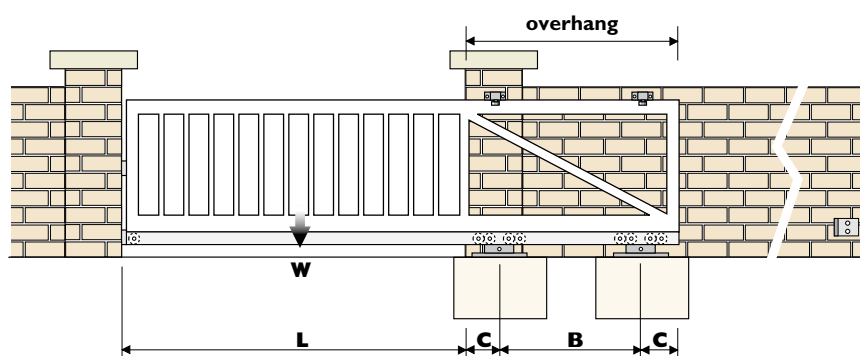
- ▶ **Max Gate Width** 10m (excluding overhang)
- ▶ **Max Gate Weight** 1000kg
- ▶ Gates should be fabricated from welded steel section.
- ▶ Track should be welded to the bottom rail of the gate.
- ▶ Side clearance should be great enough to allow for the clear opening width plus the required overhang length of the gate (refer to chart)
- ▶ Rollers should be mounted on substantial concrete footings minimum width of 500mm and depth of 800mm.

GEAR SPECIFICATION

Track	700 (4.5mm thickness) or 710 (6mm thickness)
Material	Steel Zinc plated, standard length 6m
Bottom Rollers (2 per gate)	704, 708, or 718 (refer to table below)
End Guide (2 per gate)	702 or 712 (refer to table overleaf)
End Rollers (2 per gate)	701 or 705 (refer to table overleaf)
Top Guide (2 per gate)	703 side wall (screwed) or 703c side wall (concrete)

HOW TO CHOOSE YOUR TITAN GATE GEAR

Planning the construction of your Titan cantilever gate:



Min. weight of each concrete block for each roller
 $= 1.7 \times W$ (total gate weight with the track)
 (average concrete density : 2.6 to 2.8 kg/m³)

B (Distance between roller centres) $= 0.3 \times L$

C = Distance from centre of roller to gate adjacent cornered overhang, on each side in metres

Read across the chart to your required gate opening width, then read downward to estimate gate weight. Shaded area indicates roller type (refer to colour key) and the overhang length 'C' that is required.

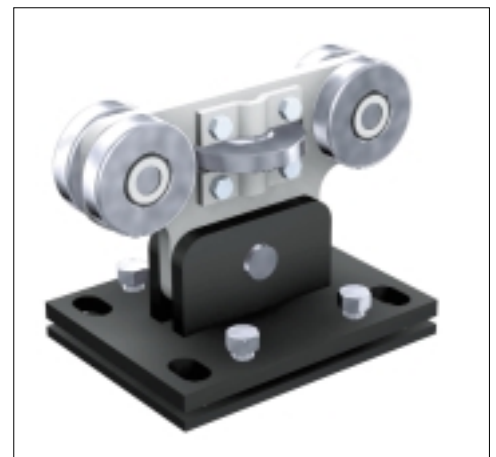
OVERHANG LENGTH 'C' IN METRES SHOWN IN BOXES

		Opening Width in Metres									
		3.0	3.5	4.0	4.5	5.0	6.0	7.0	8.0	9.0	10.0
Gate Weight in kg	Up to 250kg	0.235	0.235	0.235	0.235	0.235	0.235				
	Up to 550kg	0.345	0.345	0.345	0.345	0.345	0.345	0.345	0.345	0.410	0.410
	Up to 1000kg	0.410	0.410	0.410	0.410	0.410	0.410	0.410	0.410	0.410	0.410

- Use a pair of rollers 704 and track 700 with end rollers 701 and end guide 702.
- Use a pair of rollers 708 and track 700, with end rollers 701 and end guide 702
- Use a pair of rollers 718 and track 710 with end rollers 705 and end guide 712.

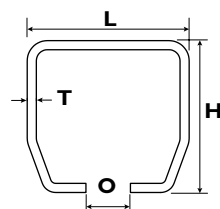
Note: To automate your Titan cantilever gate all figures and dimensions remain the same.

STRAIGHT SLIDING METAL GATES

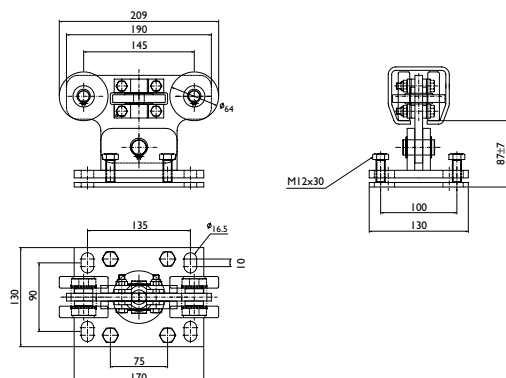


TITAN CANTILEVER METAL GATES

STEEL TRACK							
Part No.	Material	Length	Weight kg	L	H	O	T
700	Galvanised Steel	6m	51.5	80	75	22	4.5
710	Galvanised Steel	6m	90	90	110	25	6



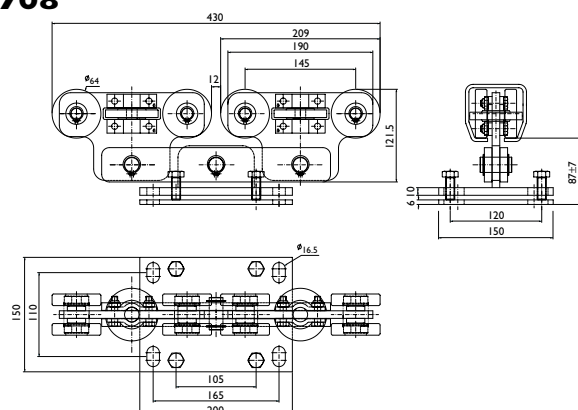
704



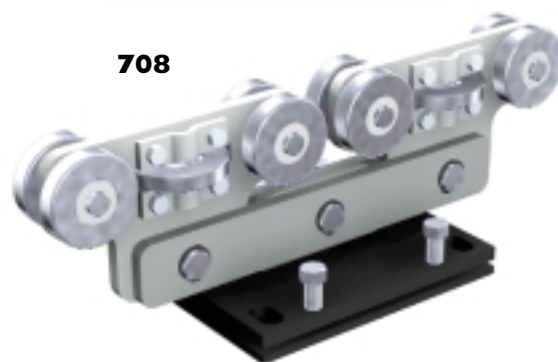
704



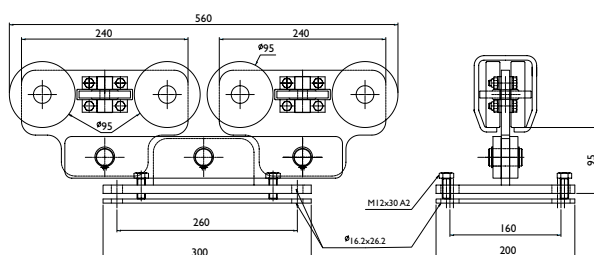
708



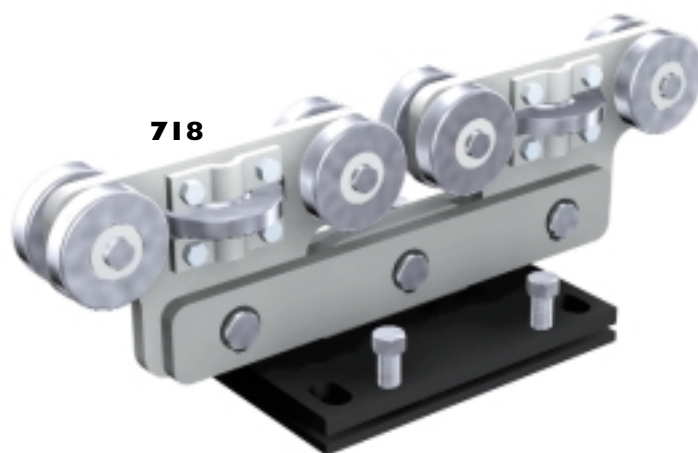
708



718



718



Part No.	Designation
702	End guide for track 700
712	End guide for track 710
701	End wheel support for track 700
705	End wheel support for track 710

701 / 705



702 / 712

