

Stone
Collection



Kalos Bianco



Agatha Bianco



Agatha Caramel



Travertino Bari



Travertino Tivoli



Magma

Stone Collection:
Thickness: 3 mm, 3+ mm, 5 mm, 5+ mm
Finish: natural and bush hammered*
Sizes: a, c, d
*Only 5 mm and 5+ mm

Wood Collection:
Thickness: 3 mm, 3+ mm, 5 mm, 5+ mm
Finish: natural
Sizes: a, b, e, g

Wood
Collection



Graphite Stone



Kalos Bianco Bush hammered



Graphite Stone Bush hammered



Travertino Bari Bush hammered



Wood Ash

Wood Walnut

Deco
Collection



Leather White



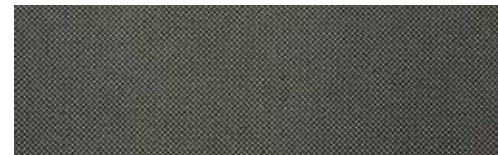
Leather Brown



Cosmos Neu



Cosmos Capuccino



Cosmos Black



Village

Deco Collection:
Thickness: 3 mm, 3+mm, 5 mm*, 5+ mm*
Finish: satin and natural*
Sizes: a, c, d
*Only Village

Steel Collection:
Thickness: 3 mm, 3+ mm, 5 mm, 5+ mm
Finish: natural
Sizes: a, c, d, f, h, i

Steel
Collection



Steel White



Steel Corten



Steel Dark



Strattos



Strattos Bush hammered

Strattos

Strattos Collection:
Thickness: 3 mm, 3+ mm, 5 mm, 5+ mm
Finish: natural and bush hammered
Sizes: a, d, f, h, i
*Only 5 mm and 5+ mm

Blizzard
Collection



Blizzard Cendra



Hydra Beige



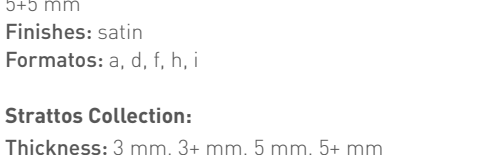
Hydra Moka



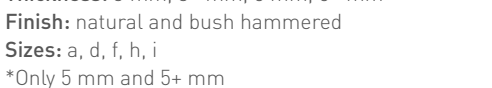
Hydra Argen



Hydra Plomo

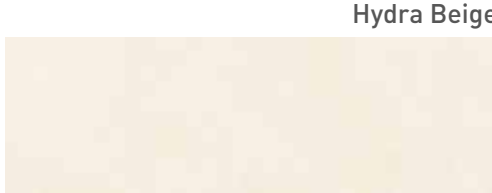


Hydra Brown



Hydra Wengué

Hydra
Collection



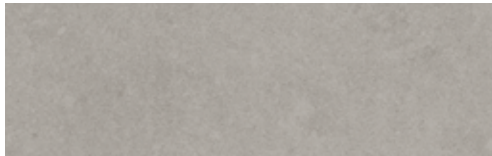
Vulcano Lahar



Vulcano Vapor



Vulcano Humo



Vulcano Concrete



Vulcano Ceniza



Vulcano Roca

Vulcano
Collection

Zahir
Collection



Zahir Perle



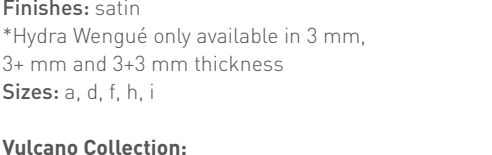
Zahir Noir



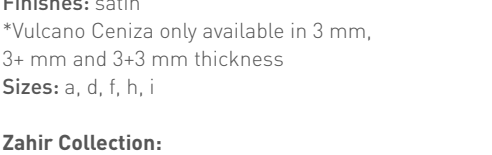
Zahir Perle



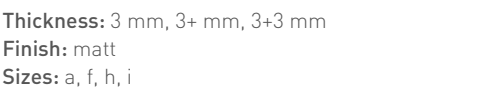
Zahir Noir



Zahir Perle

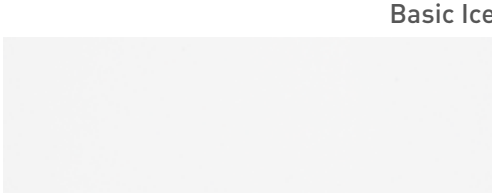


Zahir Noir

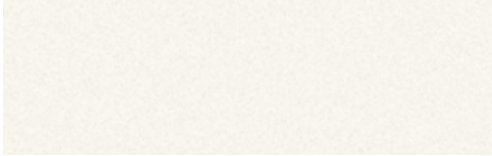


Zahir Perle

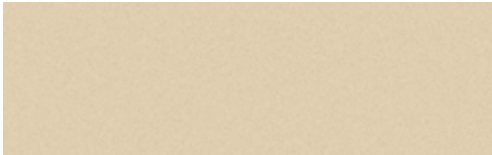
Basic
Collection



Basic Ice



Basic Neu



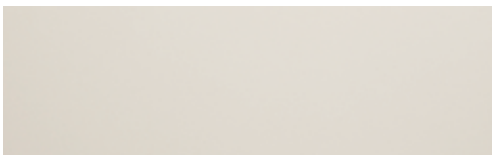
Basic Capuccino



Basic Orange



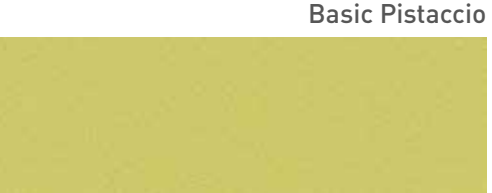
Basic Gorri



Basic Bone



Basic Bone



Basic Pistaccio



Basic Blau



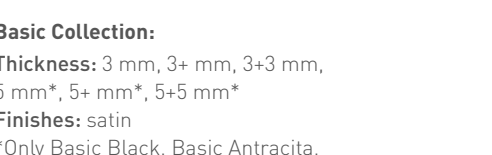
Basic Grey



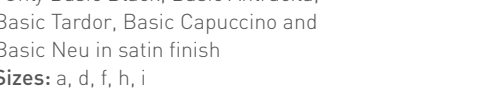
Basic Caelum



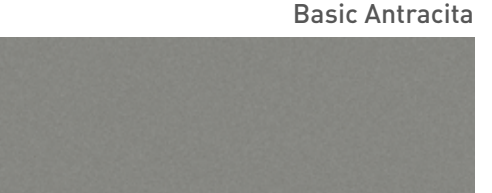
Basic Black



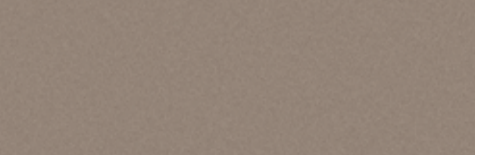
Basic Bone



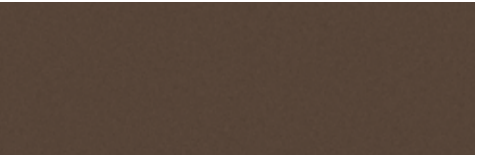
Basic Bone



Basic Antracita



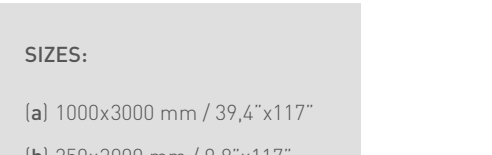
Basic Tardor



Basic Coffee



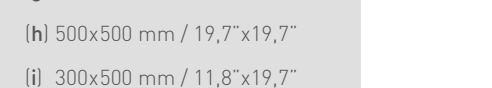
Basic Black



Basic Black



Basic Black



Basic Black

SIZES:
(a) 1000x3000 mm / 39,4"x117"
(b) 250x3000 mm / 9,8"x117"
(c) 1000x1500 mm / 39,4"x58,5"
(d) 1000x1000 mm / 39,4"x39,4"
(e) 500x1500 mm / 19,7"x58,5"
(f) 500x1000 mm / 19,7"x39,4"
(g) 200x1000 mm / 7,9"x39,4"
(h) 500x500 mm / 19,7"x19,7"
(i) 300x500 mm / 11,8"x19,7"

TECHLAM®

Ceramics

Collections

NEW TECHNOLOGY FOR NEW REALITIES

TECHLAM® is a porcelain tile, 3 mm and 5 mm thick, which is sold in panels of up to 1000x3000 mm.

Its large size and minimal thickness make this porcelain the best solution for floors, walls, façades and other architectural and decorative uses.

Its versatility in terms of size, colour, combination with other materials and its technical characteristics with regard to durability, hygiene and flexibility make TECHLAM® a versatile product that can be used for many different applications.

Additionally, ongoing improvement and excellent R&D has given TECHLAM® the most advanced digital technology in the industry with new collections designed to meet ever more demanding market needs.

Autovia Madrid-Alicante, s/n
03660 Novelda (Alicante) Spain
T 902 303 001

techlam@levantina.com
www.levantina.com



LEVANTINA

THE NATURAL STONE COMPANY

TECHLAM®

Ceramics

LEVANTINA

THE NATURAL STONE COMPANY

English 2016

Village