

Special Glazing

NBS SPECIFICATIONS

Self Supporting rooflights are generally used on the ridge of a roof slightly above the finished roof level with a pitch of 30-45°.

They can be supplied with motorised ventilation and specialised glass if required.



SOLUS ROOFLIGHTS

TYPE	Solus Rooflights for special glazing requirements can be pitched as required by Architect. To BS 5516 CP3 Chapter V and BS 6399 Part 3 1988.
FRAME	Aluminium, aluminium to BS 1474:1987 Alloy 6063-T6. Bars normally at 600mm but can be changed to suit Architects requirements.
FINISH	Polyester powder coated to BS 6496 Interpon D92 range 25 Year life expectancy on powder coating.
COLOUR	RAL 9010 white matt or any standard RAL colour.
KERB	Structural kerb by Main Contractor. Normally 100mm/150mm wide x 150mm high. Kerb must be capable of supporting the weight of the structure. Glass structure weighs 50 kilos M ² surface area.
GLAZING	Sealed double glazed units comprising 6.0mm clear toughened outer pane/16mm air gap argon filled, 6.4mm Low 'E' laminate inner. Other glass can be fitted if required to suit your requirements.
FRAGILITY	They have been tested and are classed as NON FRAGILE Class B. To ACR(M)001:2005 Test for Fragility of Roofing Assemblies
FLASHINGS	Lead by others.
PROFILE	Height in centre dependant on size of dome required.
SIZES	To suit your overall kerb size.
FIXING	Normally fitted by Lareine Engineering fitters.



LAREINE ENGINEERING LTD

Unit 1, Armadale Industrial Estate,
Armadale, West Lothian,
Scotland, EH48 2ND

Tel: 01501 731600/731699

Fax: 01501 733828

E-mail: info@lareineengineering.com

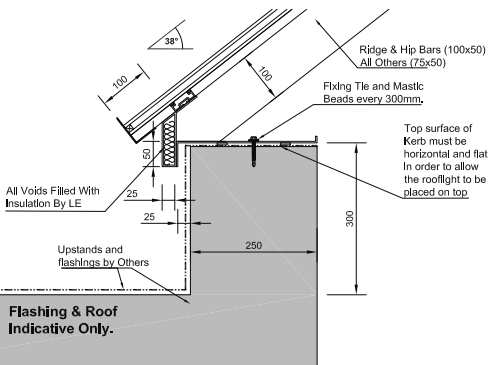
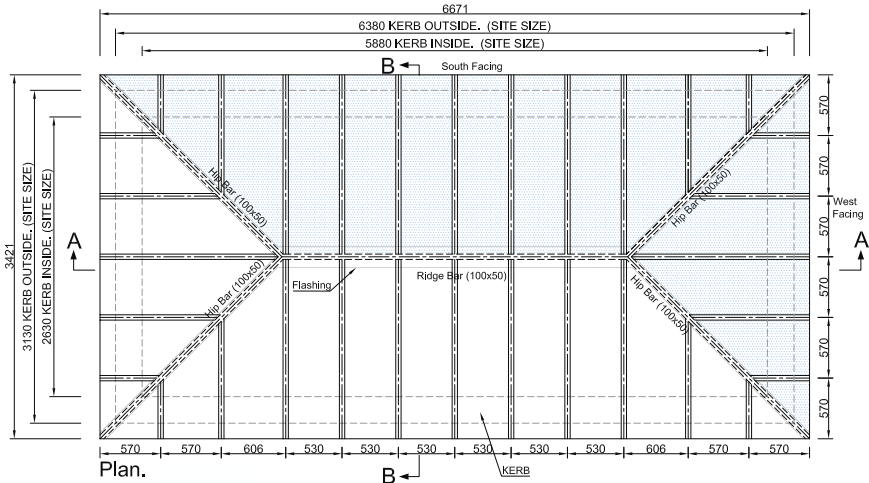
Web: www.lareineengineering.com



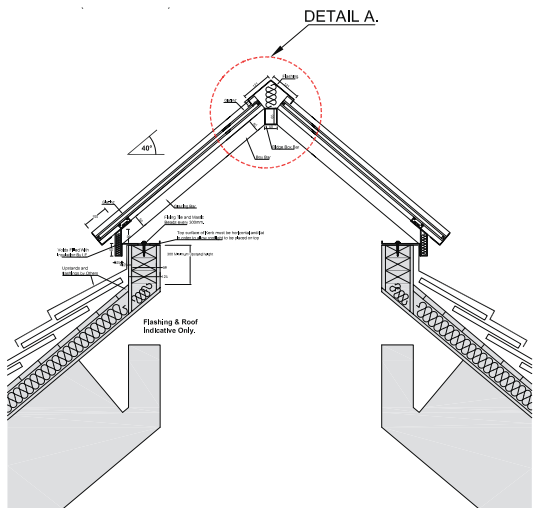
All Rooflights have been tested at BRE and are manufactured to: BS EN 6375-1:2009 Weather Tightness; BS EN 1026 / 12207:2000 Air Permeability; BS EN 1873 / 12208:2000 Water Tightness; BS EN 12210:2000 Wind Resistance; BS EN 1991-1 Snow Load; BS EN ISO 140 Acoustic; BS EN 1627-1630 Security.

The following diagrams show typical Special Glazing fixing details. Other details upon request.

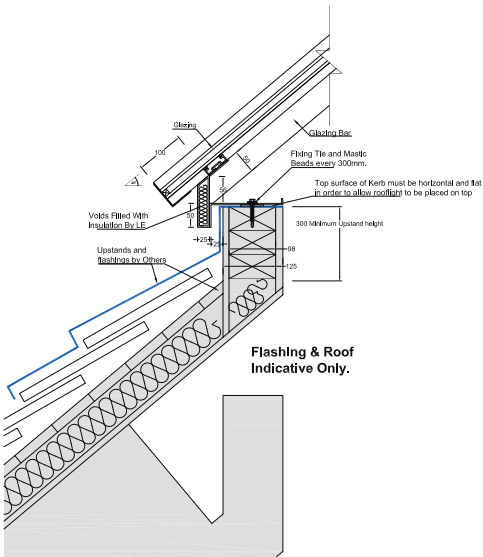
Diagram shows different glass can be used on the same rooflight for solar and light transmittance control.



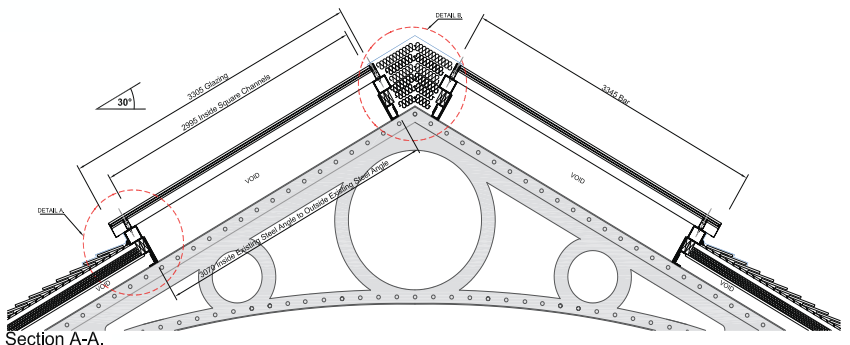
Detail A.



Section A-A



Detail A.



Section A-A.