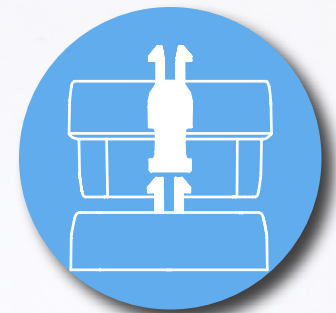


pathfinder



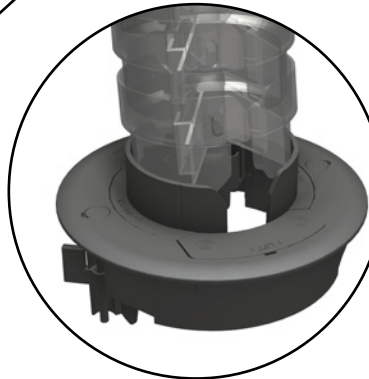
umbilical

PATHFINDER segment jaws are designed to allow cables to be 'wiped in', or removed easily at any time

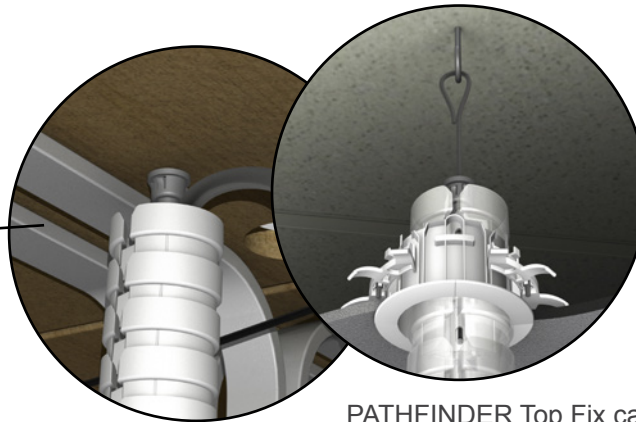


PATHFINDER has twin, asymmetric, segregated compartments, each capable of accepting power and data cables, as well as 16mm, 20mm and 25mm flexible conduits

Enclosed segments provide improved aesthetics over 'open segment' umbilicals



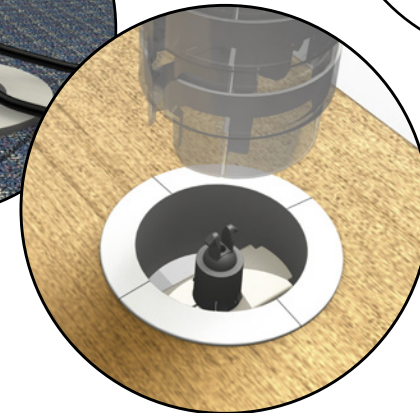
When used with our UNIQUE Floor Grommet, PATHFINDER allows **TOTAL CABLE PROTECTION**, unequalled by any other umbilical containment system



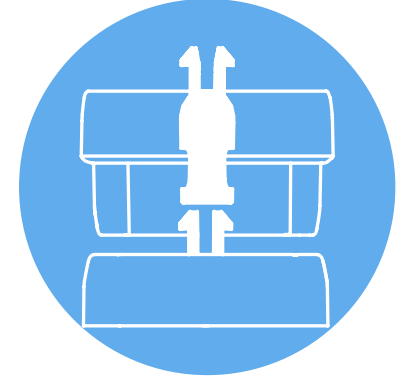
Optional stainless steel cord provides protection for cables from undue tension

PATHFINDER Top Fix can be: screwed to the underside of a desk top or meeting table; snapped into a 25mm hole in steel/plastic panels (such as PATHWAY ADAPTOR); or, (with integrated wire gripper), used to tension a ceiling hung umbilical

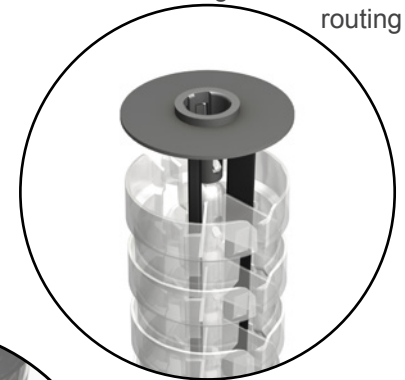
PATHFINDER bottom fixing can be: screwed to any suitable surface; used with the Pathfinder Weighted Base; or, clipped into the PATHFINDER Desk Flange for ceiling hung applications



PATHFINDER can be extended on-site, to suit different applications, with a simple "PUSH & CLICK"



Where a RIGID umbili-column is required, support rods can be used to limit, or even prevent flexing. This feature also allows users to be creative in the design of Pathfinder routing



grommet



IEC 61534-22 compliant

PATHFINDER Floor Grommet is the first of its kind to enable **TOTAL CABLE PROTECTION** from desk to underfloor, when used in conjunction with Pathfinder Umbilical

Designed to QUICK-FIT into industry standard 5 inch / 125-128mm cutouts, the PATHFINDER Floor Grommet can be used as a conventional floor pass-thru, allowing power / data cabling, including 16mm flexible conduit, to exit via the Side Lids

But, if used in conjunction with PATHFINDER Umbilical, using PATHFINDER Grommet Adaptor, it can even accommodate multiple 20mm / 25mm data conduits as well

Industry standard size grommet allows it to be retrofit into existing raised floor apertures

Screw Caps

OPTIONAL quarter turn spring loaded clamps for 10mm - 50mm floors

STANDARD Push Fix Grips can accommodate holes from 125mm - 128mm (5inch)

Foam Air Block for pressurized floors

Tethered Side Lid (tool release)

Grommet Adaptor (bayonet connection)

Large centre aperture allows, industry standard, track tap-off plugs and even POWERBOX PDUs, with RCBOs installed, to be passed through the floor

"The only way to totally protect cables, is to enclose them from end-to-end. The PATHFINDER System achieves that and in so doing completely removes cables from view - perfect!"

PATHFINDER - safety, practicality and aesthetics - combined!

zipper

Inserting cables making you mad?
...we've made it as easy as 1, 2, 3

1



2

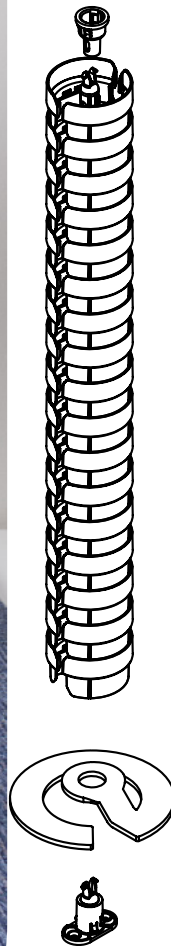


3

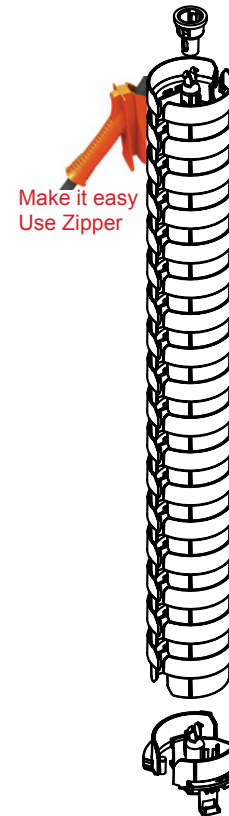


JUST ENOUGH?

PATHFINDER with
WEIGHTED BASE
protects and manages
cables vertically



When considering power and data cables
- how much protection is enough?



OR TOTAL?

TOTAL CABLE PROTECTION
with PATHFINDER and
PATHFINDER GROMMET

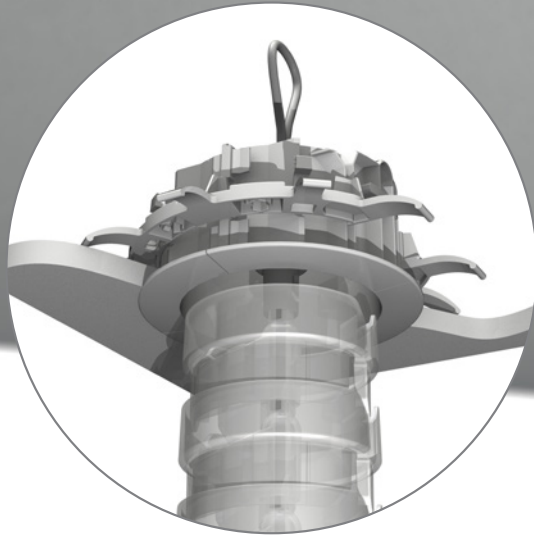
SAFE:
with no cables exposed,
tripping hazards are avoided
and obstacle-free cleaning
prevents dust & dirt build up



floor to desk

PATHFINDER can do both, the choice is yours!

ceiling to desk



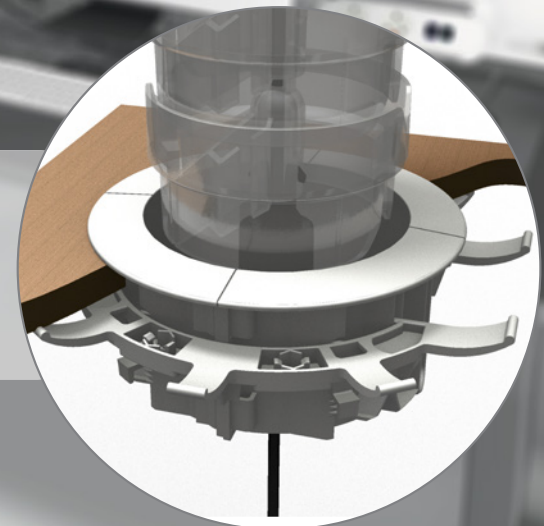
PATHFINDER Ceiling Collar gives a clean finished look when PATHFINDER drops through false ceilings. Designed to split in half, the Ceiling Collar can be clipped around PATHFINDER after it has been hung and cables 'zipped in'

Ceiling to desk umbilicals allow greater freedom for desk positioning (below ceiling apertures), than solid power poles, where CAD floorplans and on-site installation inevitably differ

PATHFINDER provides an ideal solution where power and data services are distributed in the ceiling.

Using our custom designed Ceiling Collar and Desk Flange, PATHFINDER provides **TOTAL CABLE PROTECTION** from ceiling void to PATHWAY cable tray

PATHFINDER Desk Flange simply clips into a 102mm (4inch) aperture, securing the base and allowing cables safe passage into PATHWAY cable tray under the desk



technical

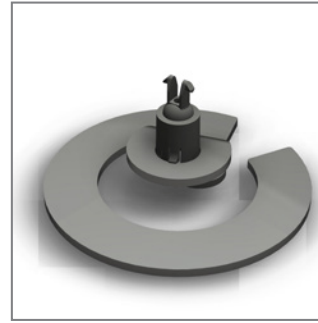
TOP FIX



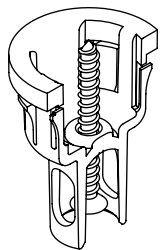
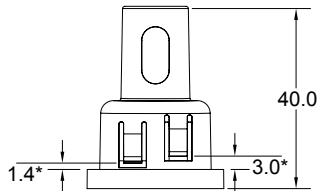
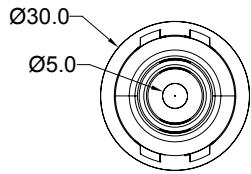
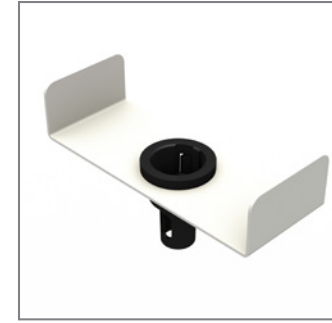
BOTTOM FIX



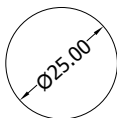
WEIGHTED BASE



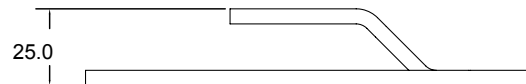
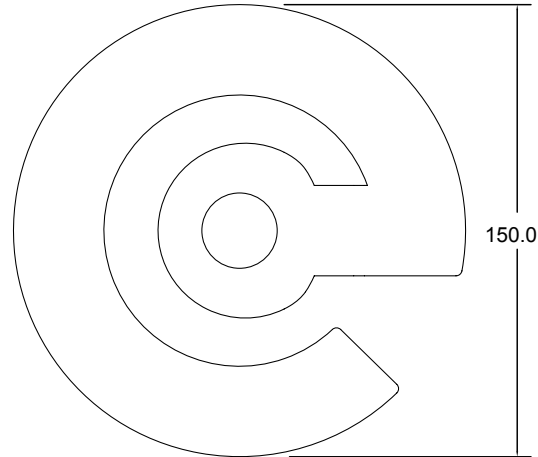
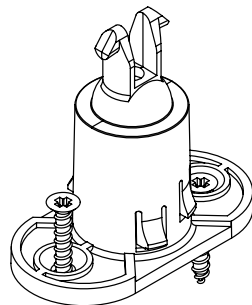
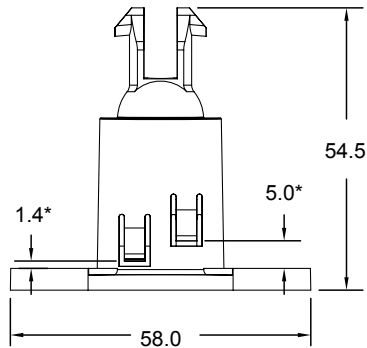
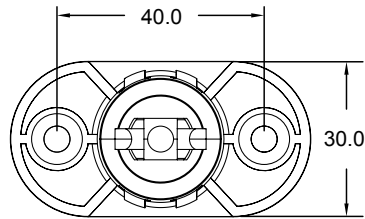
PATHWAY ADAPTOR



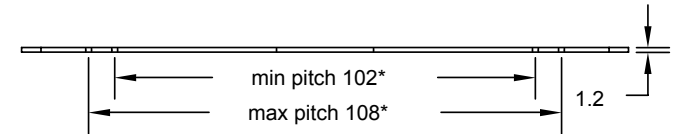
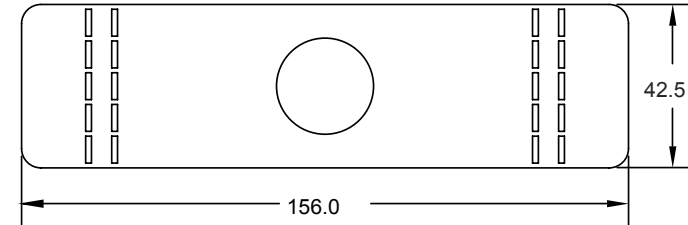
CUTOUT DIMENSIONS
(both top & bottom fix)



* OPTIONAL PANEL
THICKNESSES

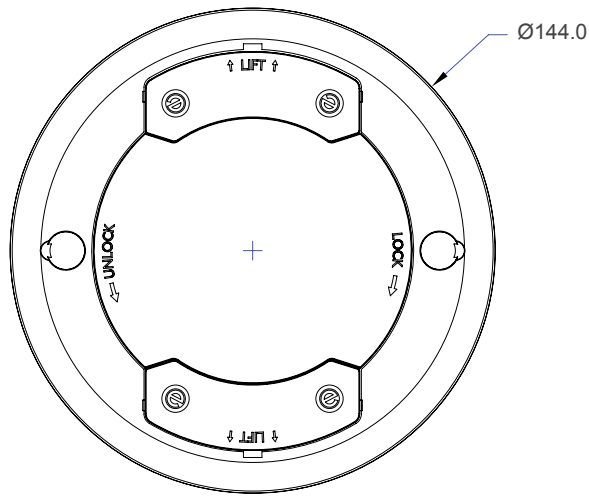


REMEMBER!
Make it easy
Use ZIPPER

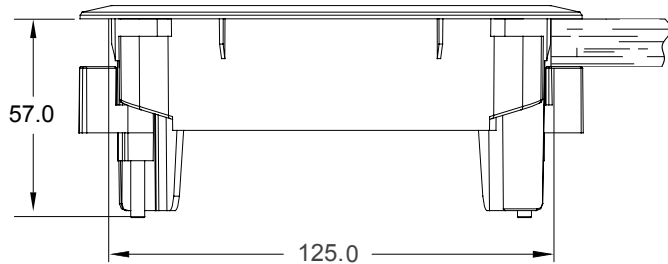


* PATHWAY ADAPTOR CAN ALSO BE USED ON COMPATIBLE TRAYS OTHER THAN PATHWAY
Check with OE Electrics outside these sizes for alternative/bespoke bracket

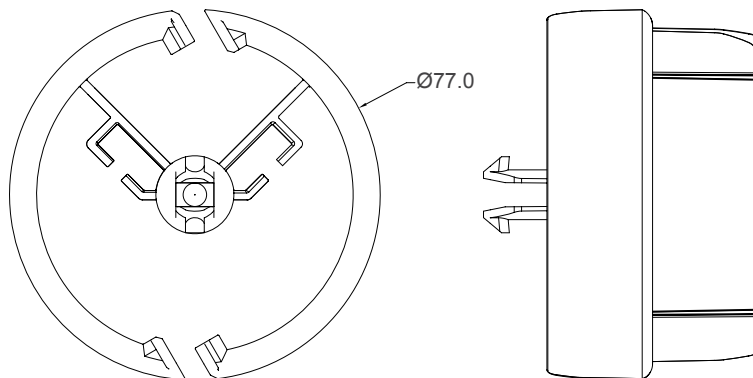
FLOOR GROMMET



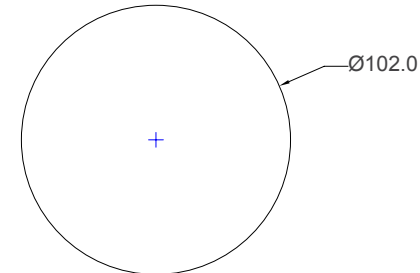
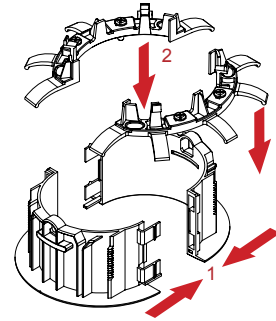
GROMMET CUTOUT 125 - 128mm (5 inch)
 PUSH FIT thicknesses min 10mm
 CLAMP FIT thicknesses min 10mm max 50mm



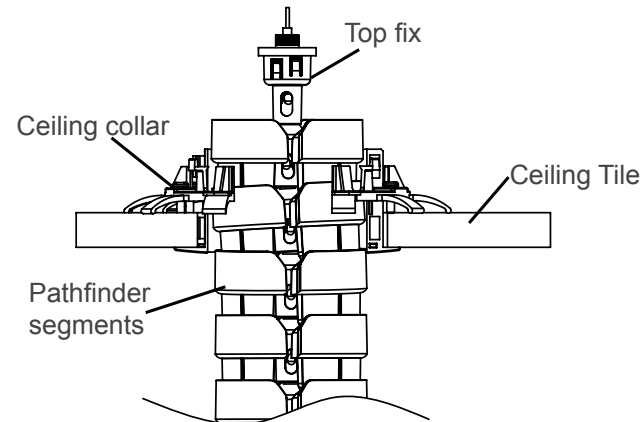
SEGMENT



CEILING COLLAR

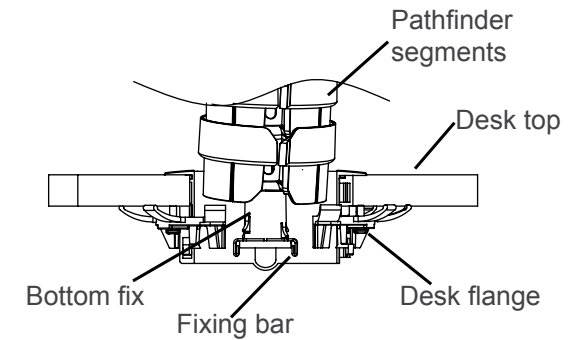
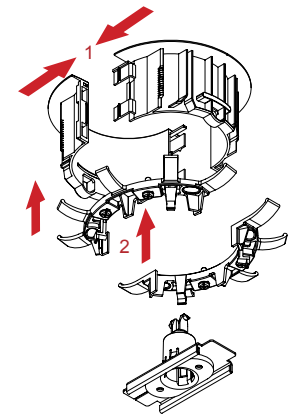


Cutout hole is Ø102mm (4inch) with
 cutout hole thickness 2-40mm



Note: DO NOT hang PATHFINDER from
 Ceiling Collar, it is only a pass-thru

DESK FLANGE



Note: DO NOT use Desk Flange upside
 down to hang from false ceiling tiles

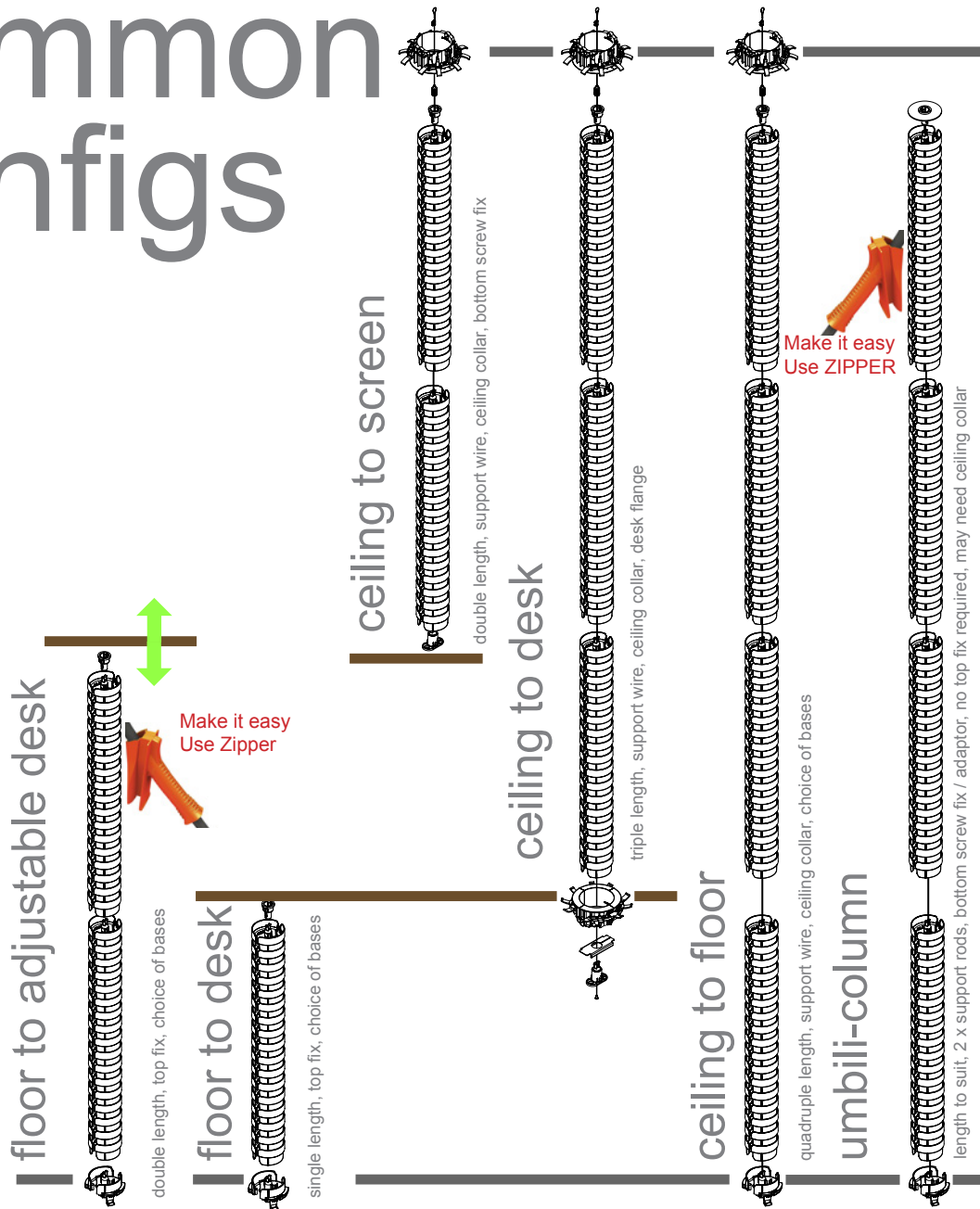
PATHFINDER CABLE AND CONDUIT CAPACITIES

Cable Size (OD = Outer Diameter)	Cable Type (examples)	Small compartment	Large compartment	Grommet sides (each side)
Cables 6mm OD	eg: CAT5e	19 ¹	58 ¹	12 ¹
Cables 9mm OD	eg: 3 core 1.5mm ² / CAT6	8 ¹	26 ¹	6 ¹
Cables 11mm OD	eg: 3 core 2.5mm ²	6 ¹	17 ¹	4 ¹
Conduit 16mm OD	eg: underfloor track tap-off	2 ²	6 ²	2 ²
Conduit 20mm OD	eg: data conduit	1 ²³	3 ²³	0
Conduit 25mm OD	eg: data conduit	1 ²³	1 ²³	0

Notes: 1 - At 40% fill
 2 - Maximum
 3 - 20mm/25mm conduit cannot be inserted with the Zipper

Note: All capacities reduce if using the Pathfinder Zipper

common configs



colours



CLEAR



WHITE



SILVER



WHITE



Graphite Grey



Light Grey