

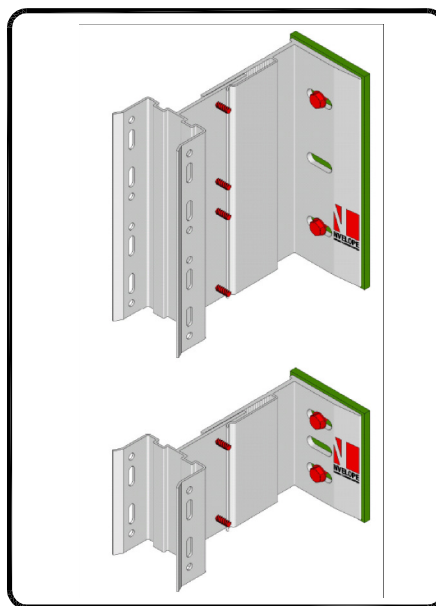
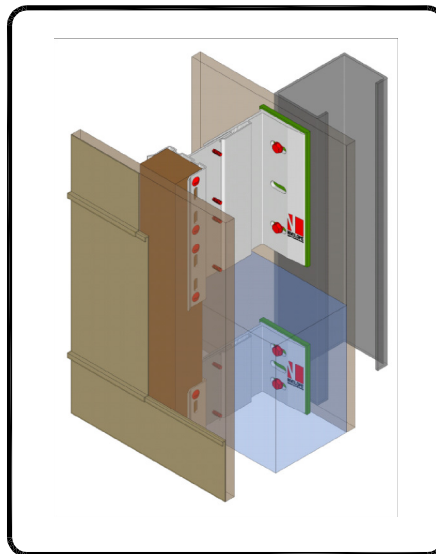
## Ventilated Aluminium support system for TIMBER / BOARD CLADDING

### LEGEND:

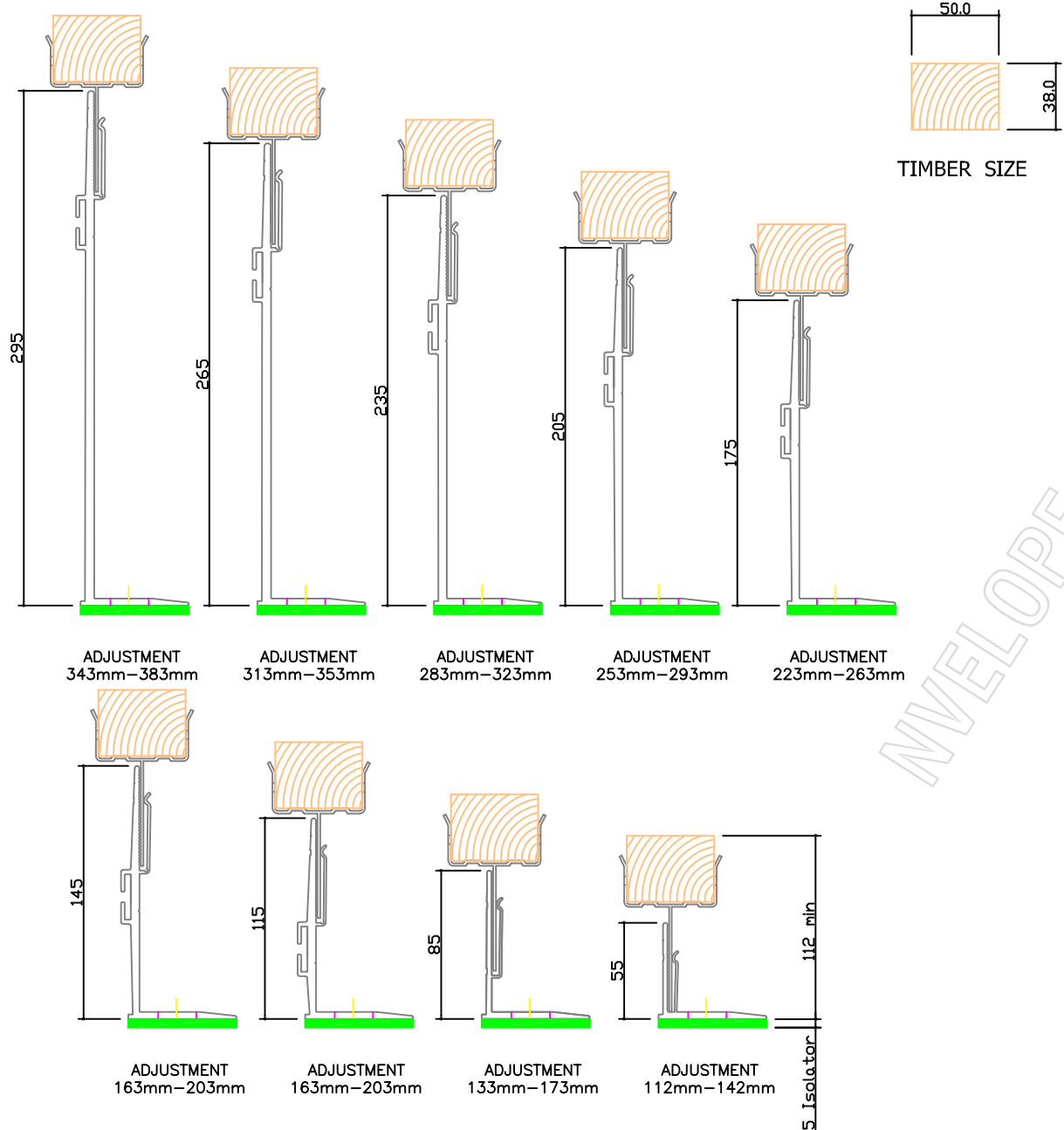
- A – cladding
- B – joint profile
- C – clamp
- D – corner-profile
- F – window profile
- 1 – Wall
- 2 – NVELOPE – support bracket
- 3 – Stainless steel fixing
- 4 – Vertical timber
- 5 – Self drilling stainless steel screw SR2 4.2 x 16
- 6 – Vertical Timber Batten
- 7 – Thermal insulation
- 8 – Ventilation
- 9 – Timber carrier
- 10 – NVELOPE Thermal isolator
- 11 – Timber fixing screw

### CONTENTS:

- NV6 – 01 Tolerances for adjustment
- NV6 – 02 View of cladding drawing locations – Timber cladding
- NV6 – 03 View of cladding – Timber cladding
- NV6 – 04 Horizontal section – NVELOPE 90 with T100 carrier
- NV6 – 05 Vertical section – Base of cladding
- NV6 – 06 Vertical section – Head of cladding
- NV6 – 07 Horizontal section – Window return detail
- NV6 – 08 Vertical section – Window sill detail.
- NV6 – 09 Vertical section – Window Head detail
- NV6 – 10 Horizontal section – External Corner
- NV6 – 11 Horizontal section – Internal Corner

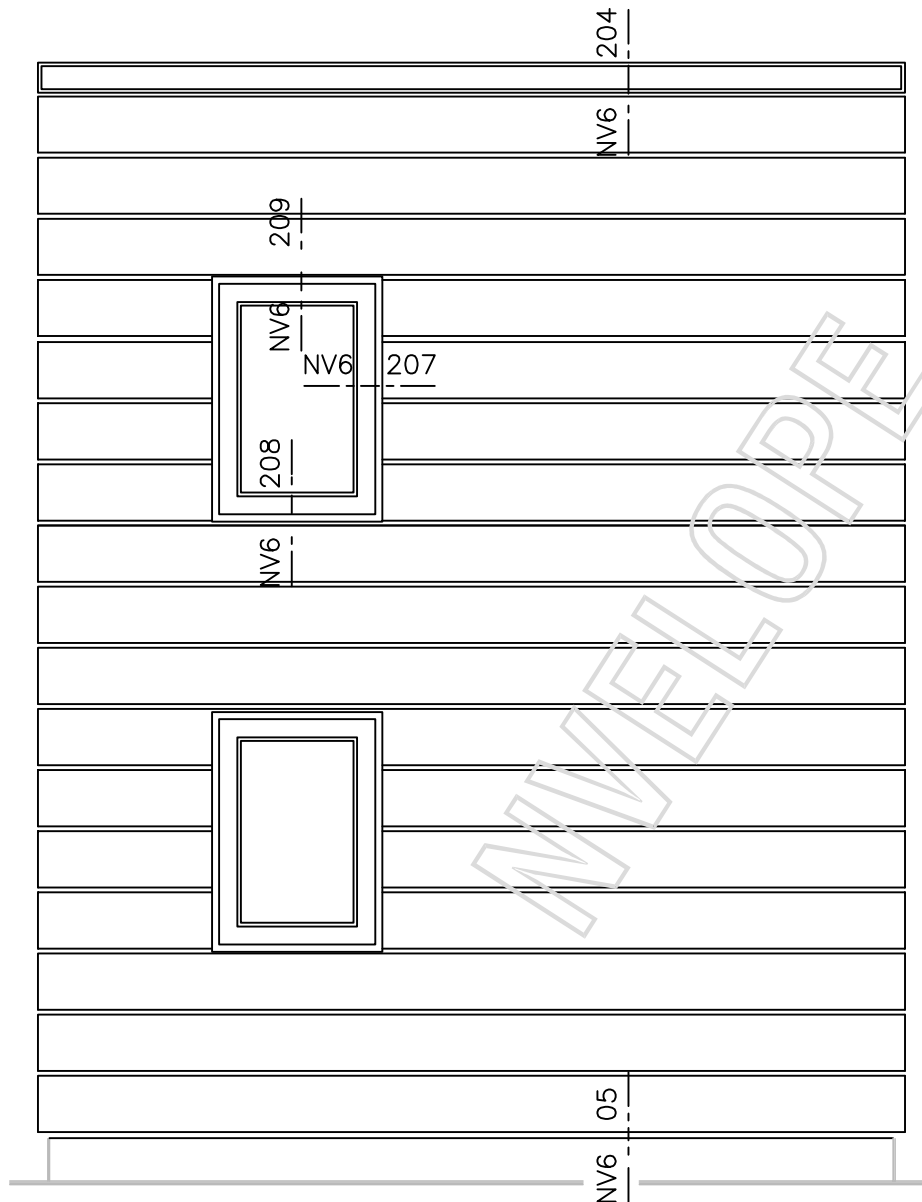


System:- NV6



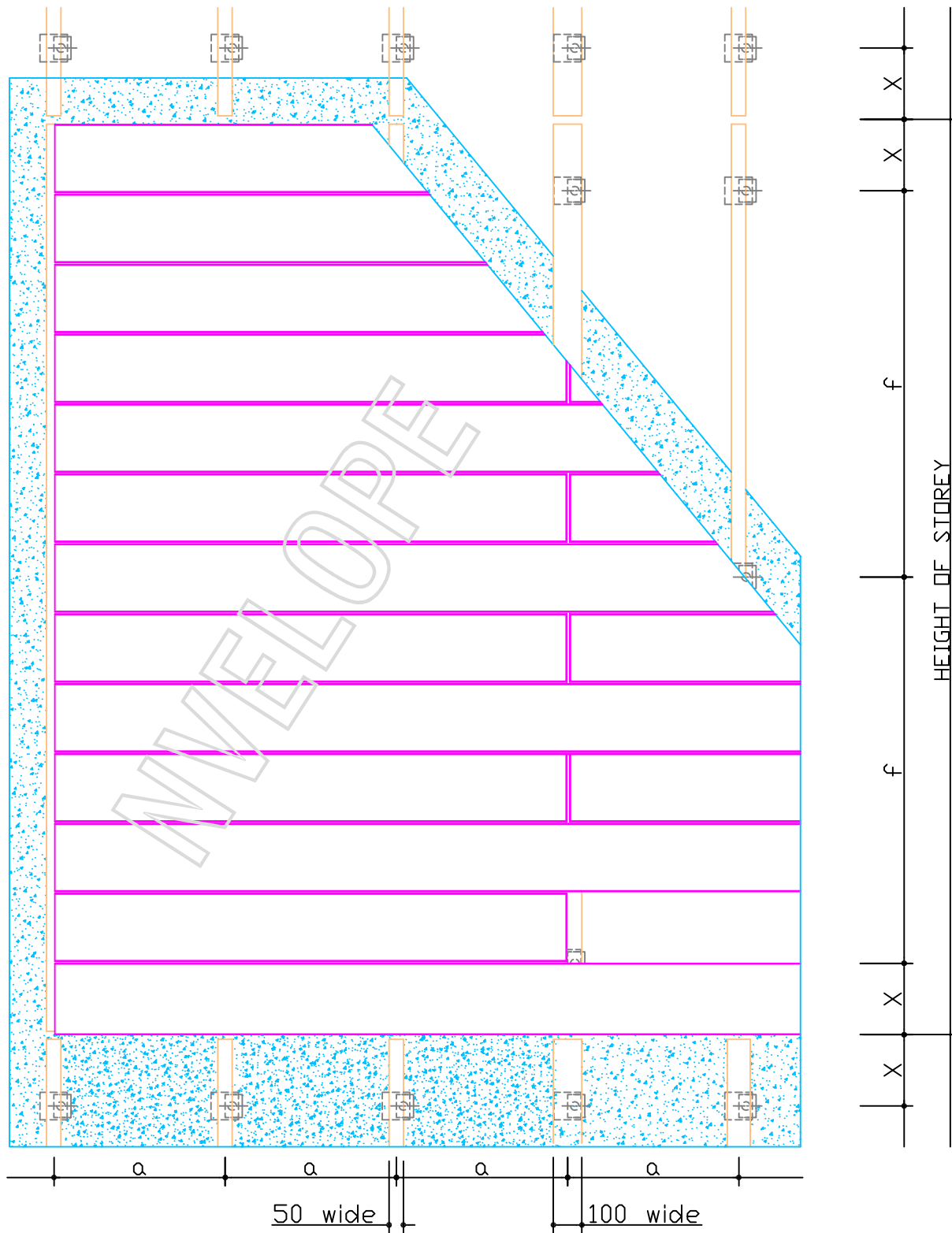
BRACKETS	Adjustment range for each bracket ( mm )		Based on a 50 x 38 timber
Nvelope 60	from 112	to 142	
Nvelope 90	from 133	to 173	
Nvelope 120	from 163	to 203	
Nvelope 150	from 193	to 233	
Nvelope 180	from 223	to 263	
Nvelope 210	from 253	to 293	
Nvelope 240	from 283	to 323	
Nvelope 270	from 313	to 353	
Nvelope 300	from 343	to 383	

HORIZONTAL SECTIONS  
TOLERANCES FOR ADJUSTMENT



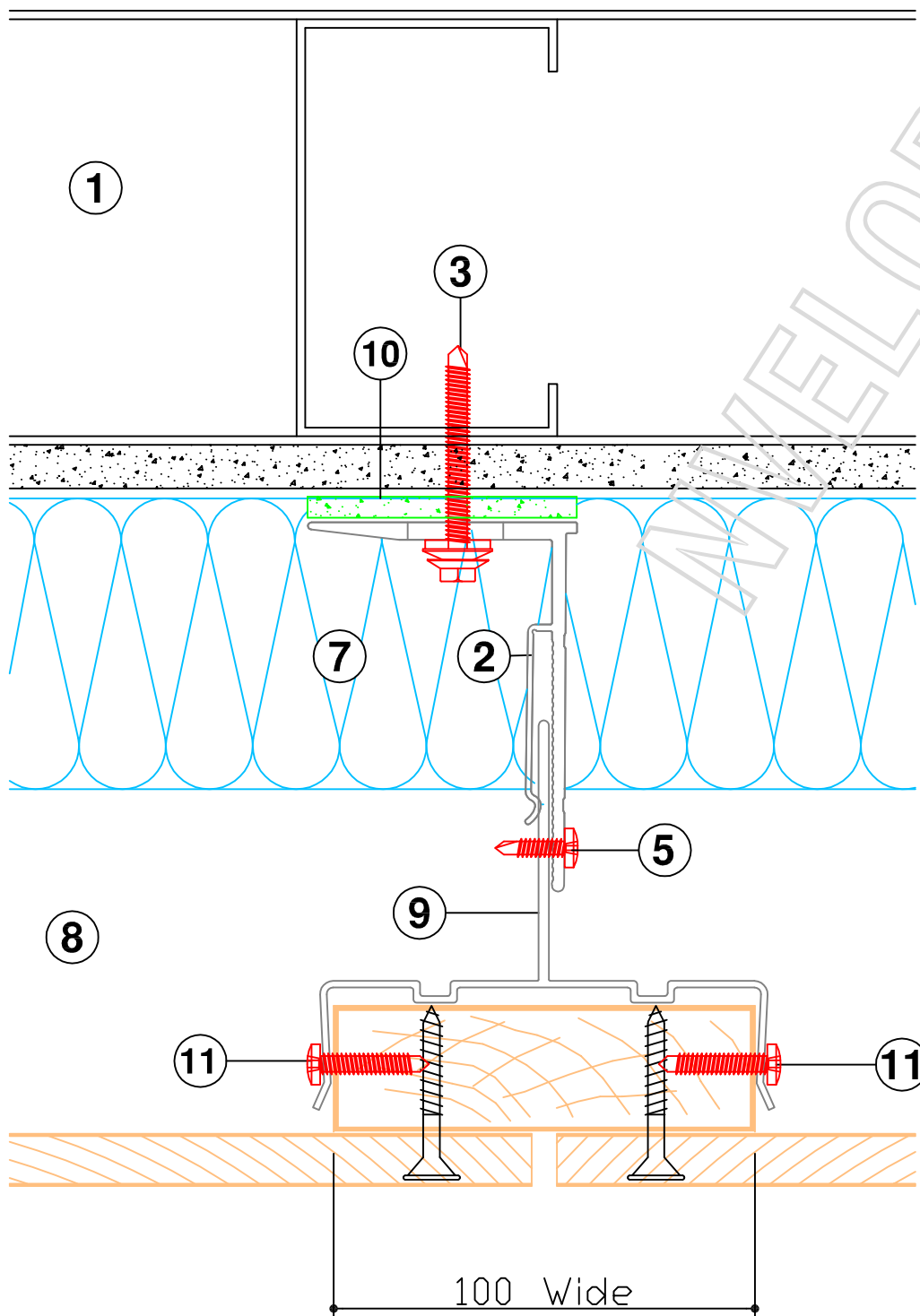
## VIEW OF CLADDING

System :- NV6

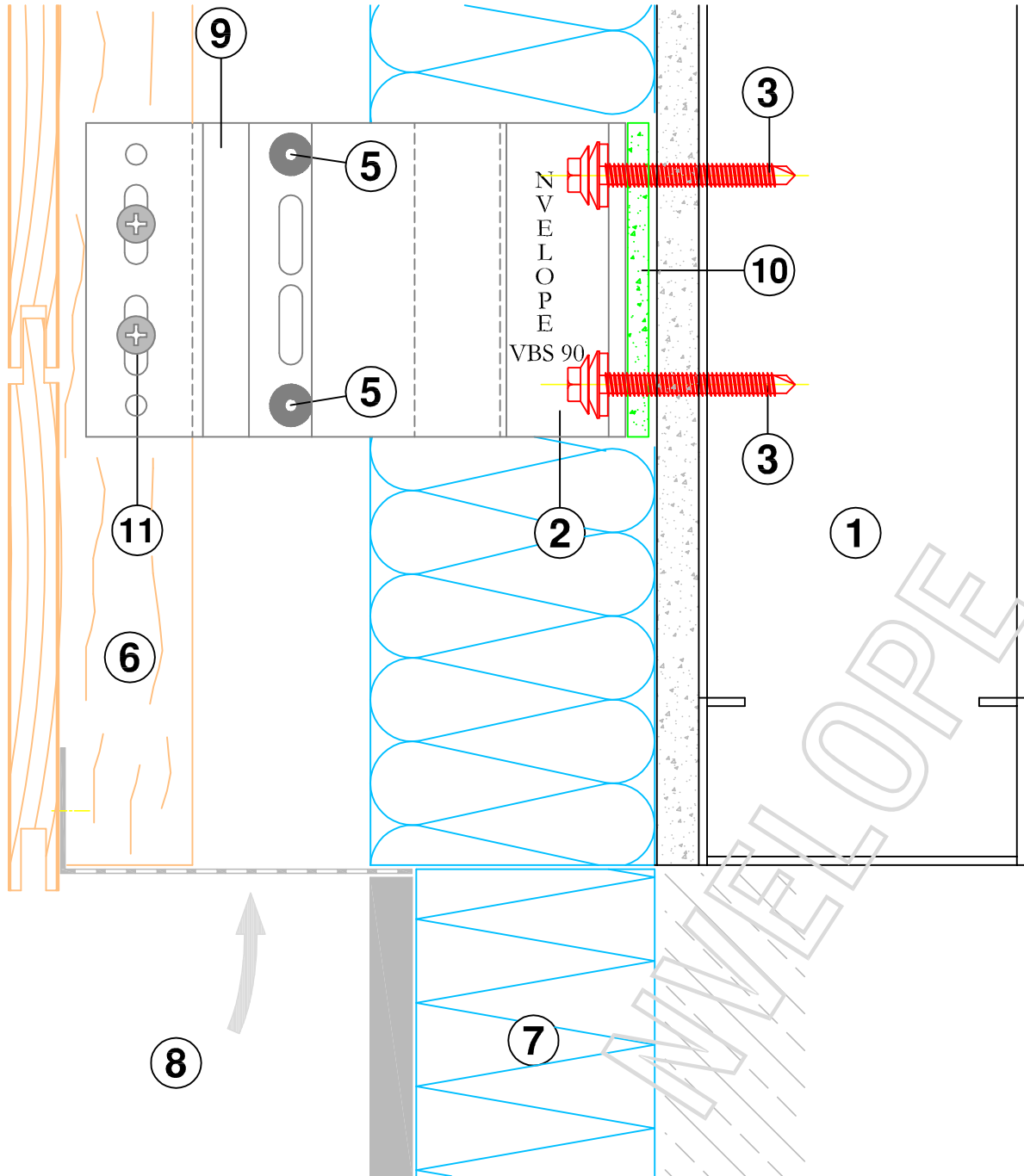


VIEW OF CLADDING

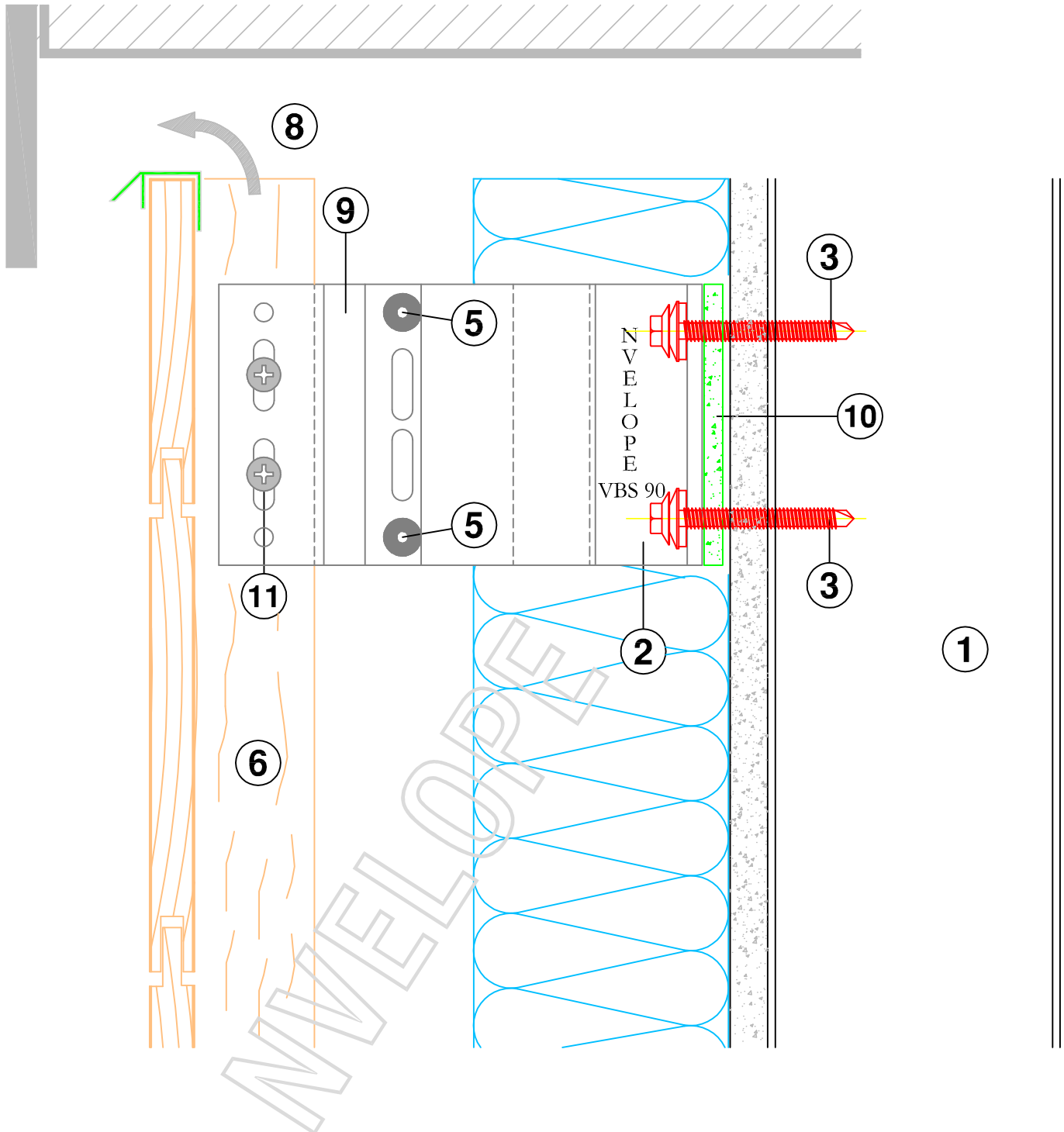
System:- NV6



HORIZONTAL JOINT SECTION - NVELOPE 90 WITH T100 CARRIER

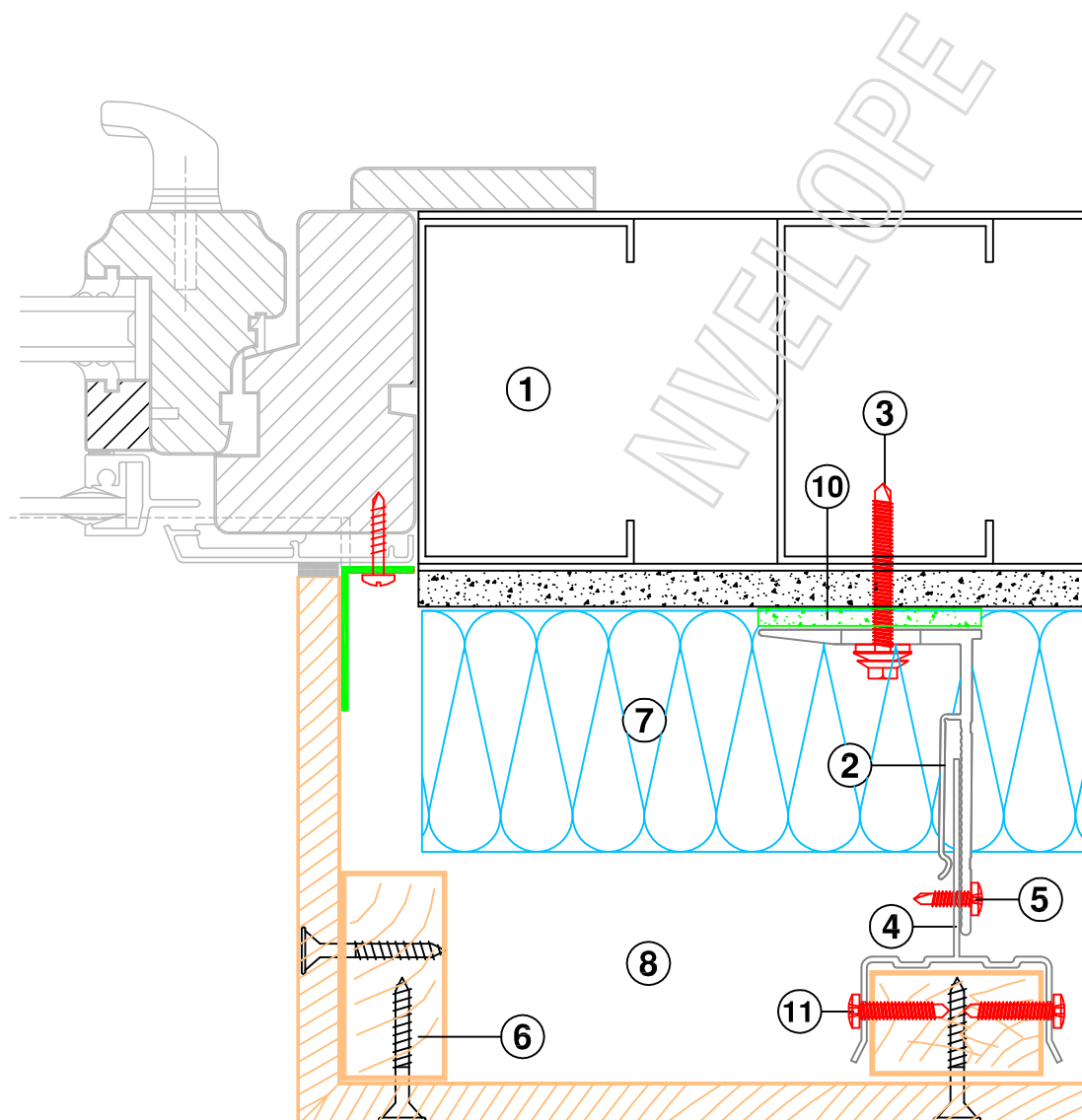


VERTICAL SECTION - BASE DETAIL



VERTICAL SECTION - HEAD DETAIL

System:- NV6



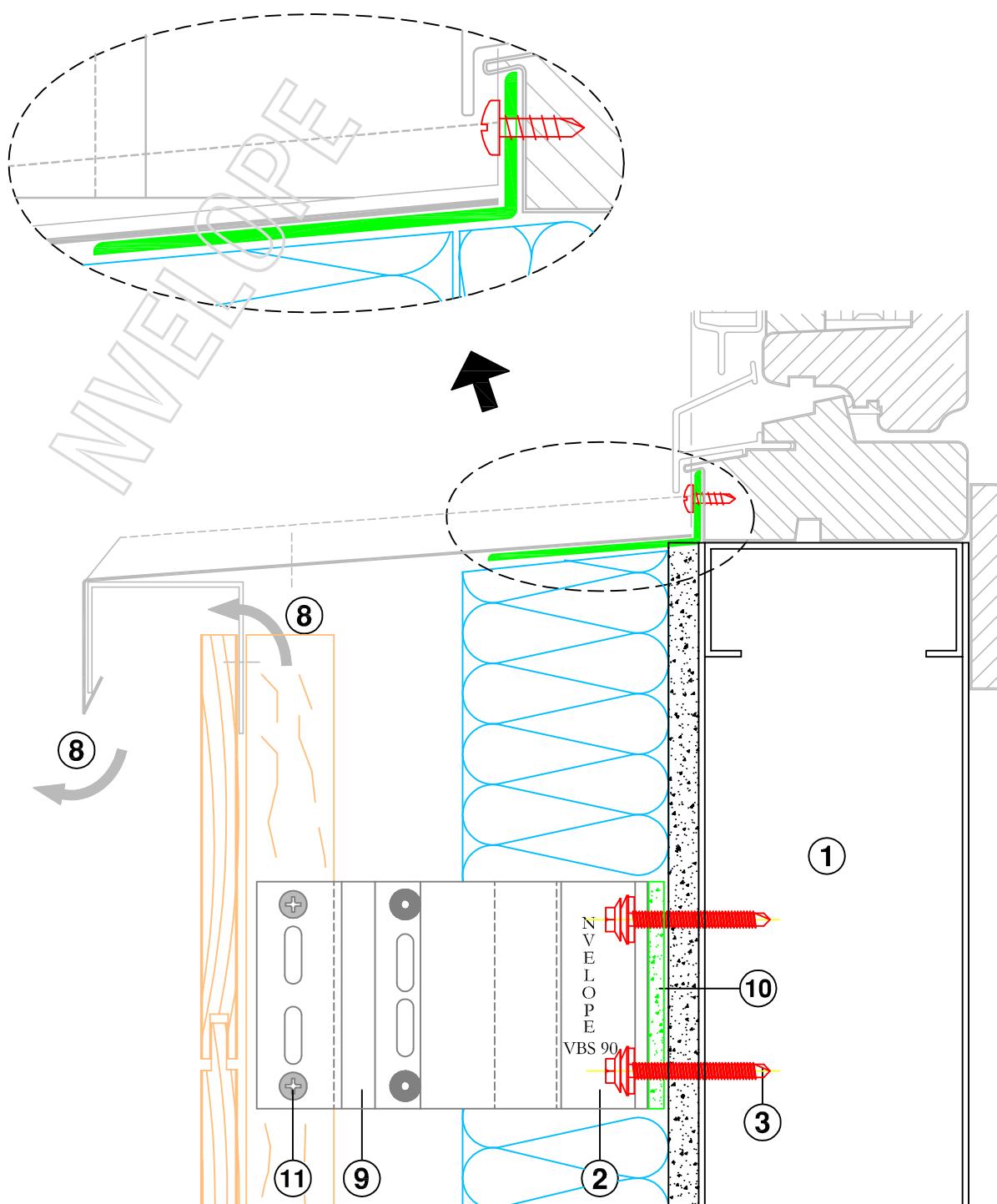
## HORIZONTAL SECTION - WINDOW DETAIL

NVELOPE RAINSCREEN SYSTEMS Ltd - tel - 01707 333396 - fax - 01707 333343

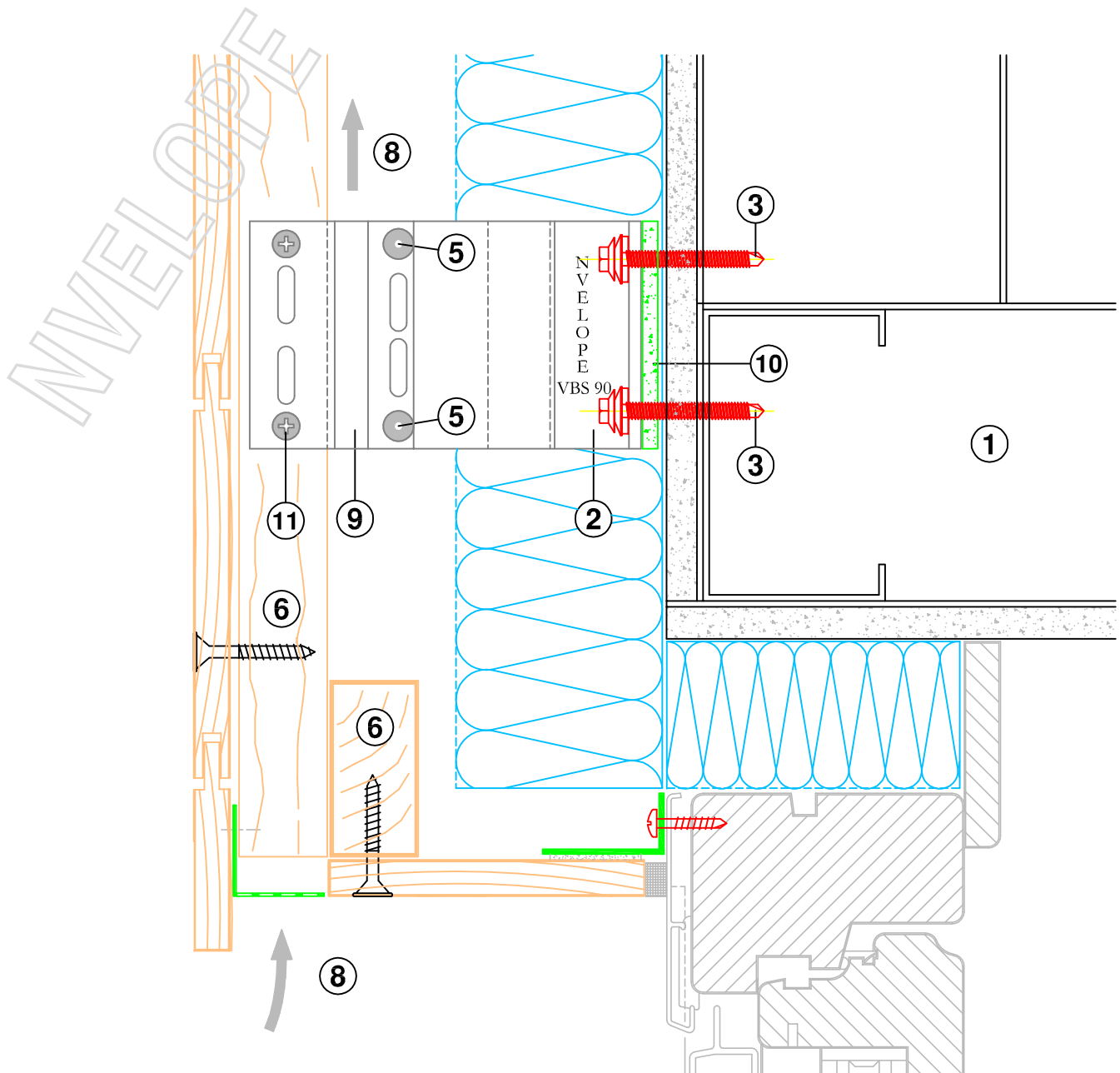
nvelope.com

Detail Sheet :- system NV6 - 07

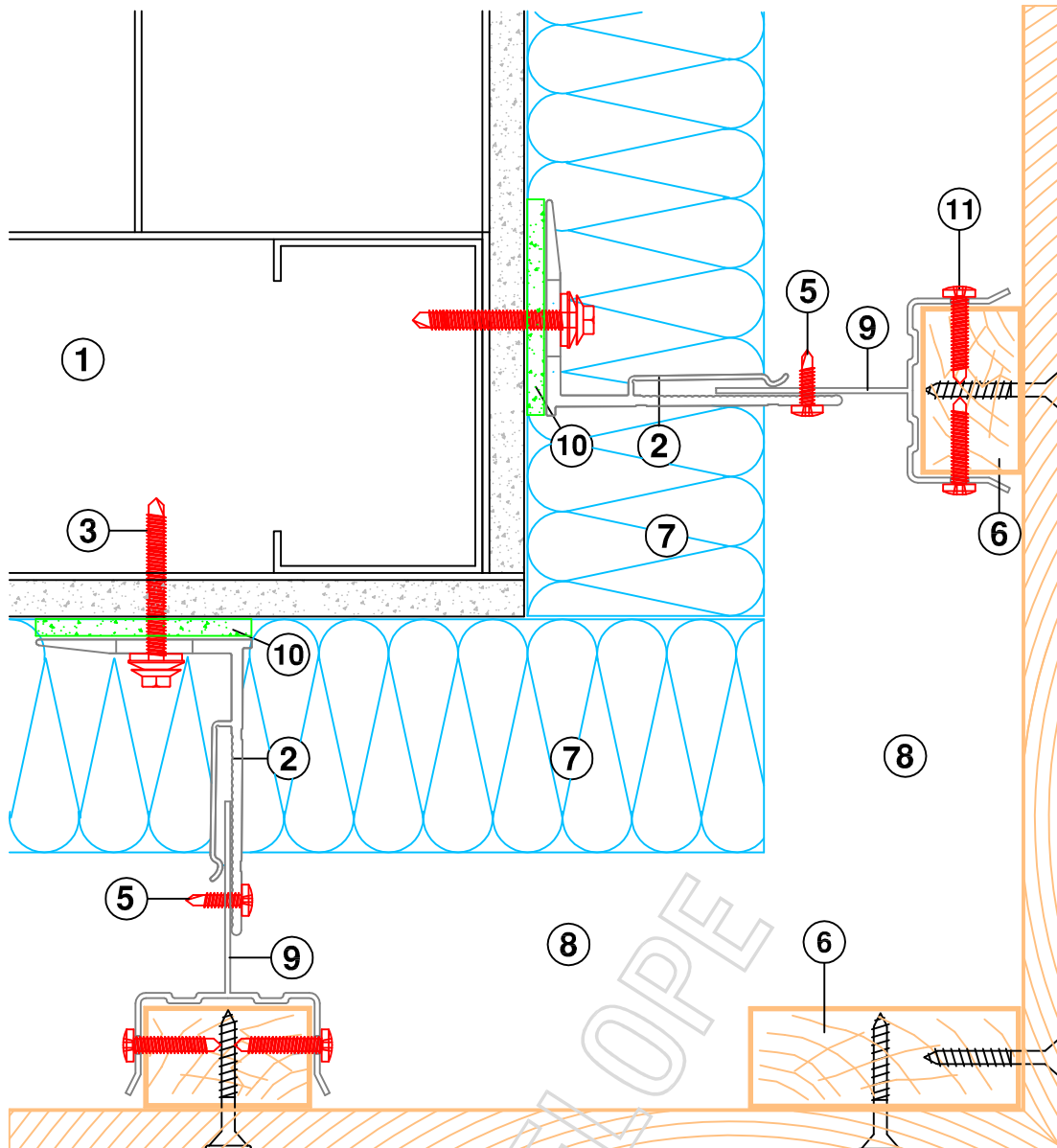




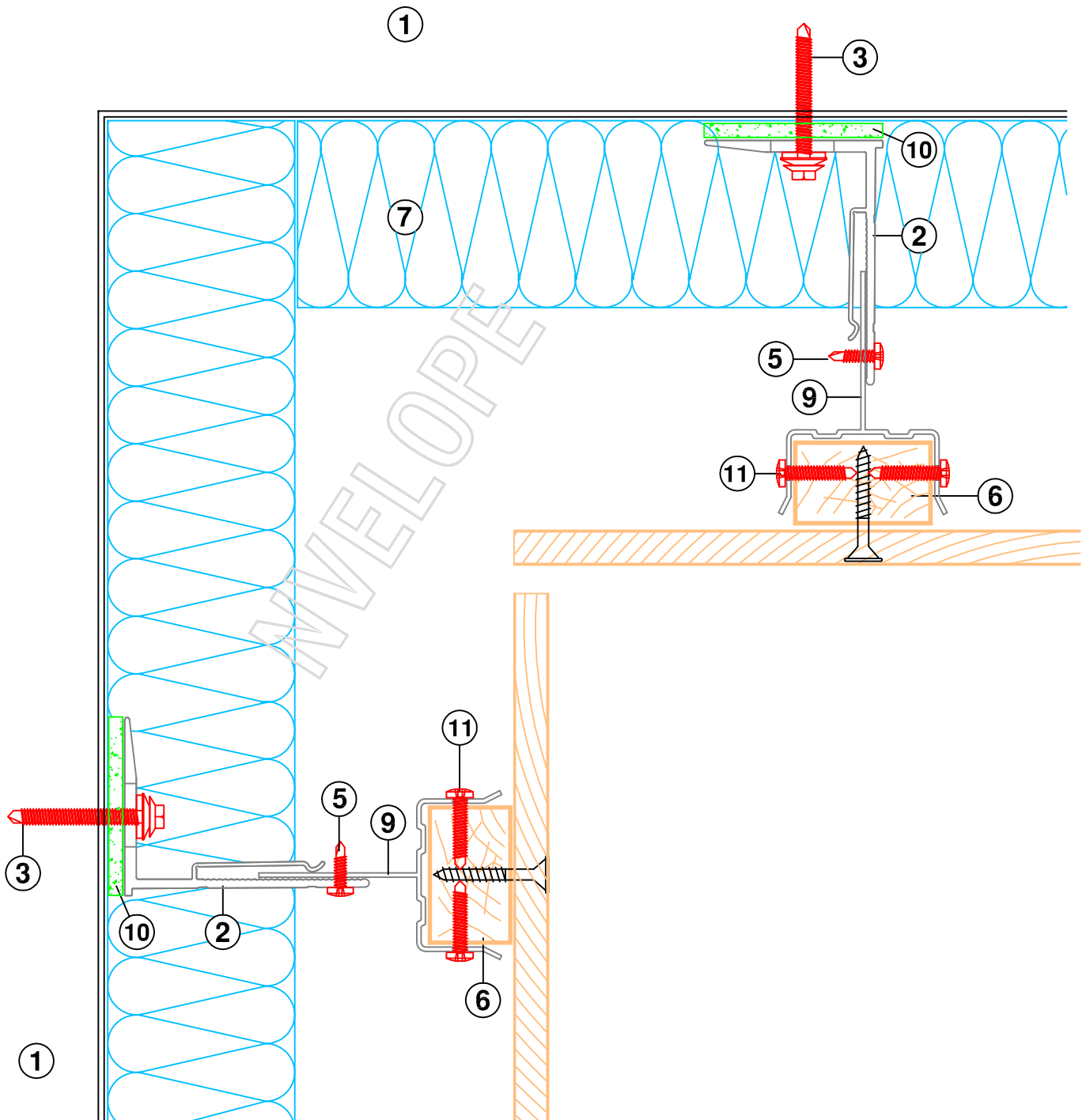
VERTICAL SECTION - WINDOW SILL DETAIL



## VERTICAL SECTION - WINDOW HEAD DETAIL



HORIZONTAL SECTION - EXTERNAL CORNER



HORIZONTAL SECTION - INTERNAL CORNER