

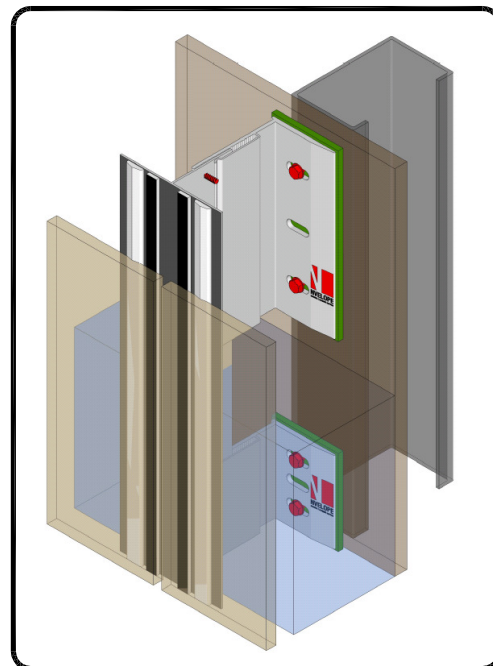
System:- NV2



aluminium support system for
rainscreen cladding

NVELOPE NV2 SYSTEM

STRUCTURAL BONDING (FEATURING SIKA TACK PANEL SYSTEM)

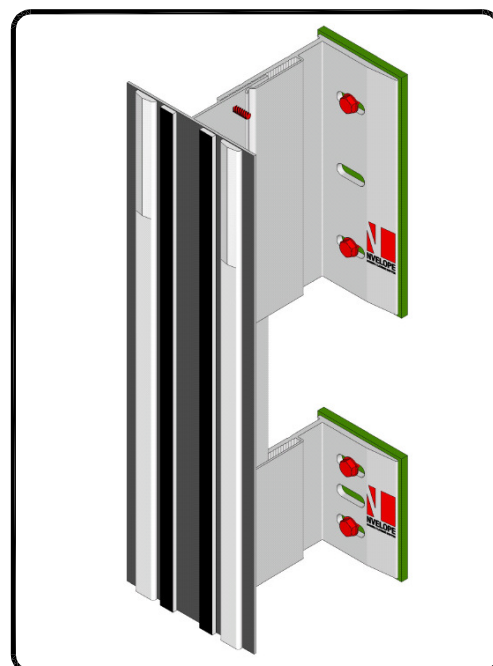


LEGEND:

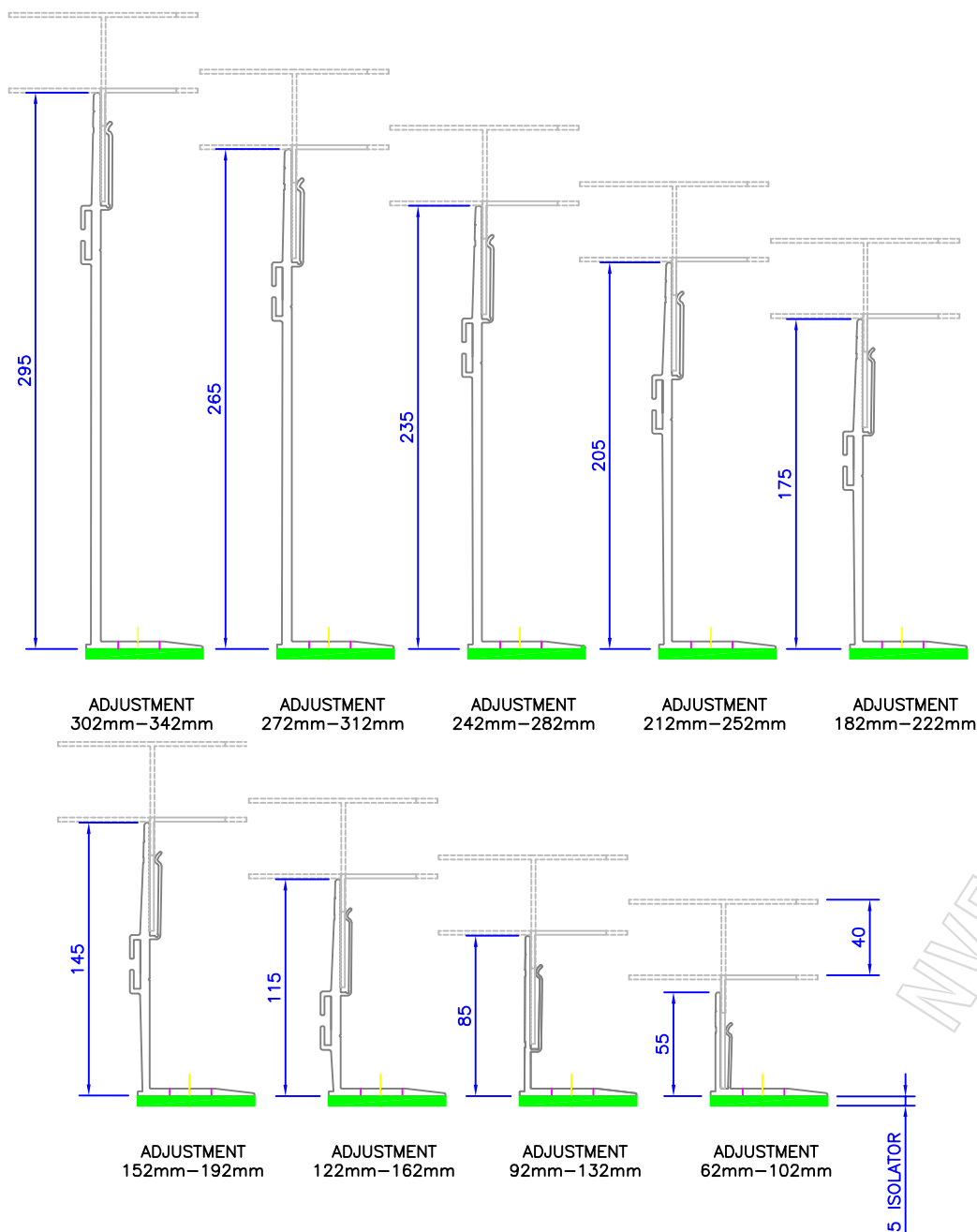
- A – Cladding
- B – Sika Tape
- C – Sika Adhesive
- 1 – SFS steel wall + cement board
- 2 – NVELOPE – support bracket
- 3 – Stainless steel fixing
- 4 – T-(L) profile vertical
- 5 – Self drilling stainless steel screw SR2 4.2 x 16
- 7 – Thermal insulation
- 8 – Ventilation
- 10 – NVELOPE thermal isolator
- 11 – NVELOPE connection profile

CONTENTS:

- NV2-00 System detail sheet
- NV2-01 Tolerances for bracket adjustment
- NV2-02 Cladding view locations
- NV2-03 Horizontal section
- NV2-04a Typical section double bracket
- NV2-04b Typical section single bracket and profile connection
- NV2-05 Vertical section—base of cladding
- NV2-06 Vertical section—top of cladding
- NV2-07 Horizontal section window jamb
- NV2-08 Vertical section window sill
- NV2-09 Vertical section window head
- NV2-10a External corner
- NV2-10b External corner with corner bracket
- NV2-11 Internal corner
- NV2-12 SIKA Adhesive use



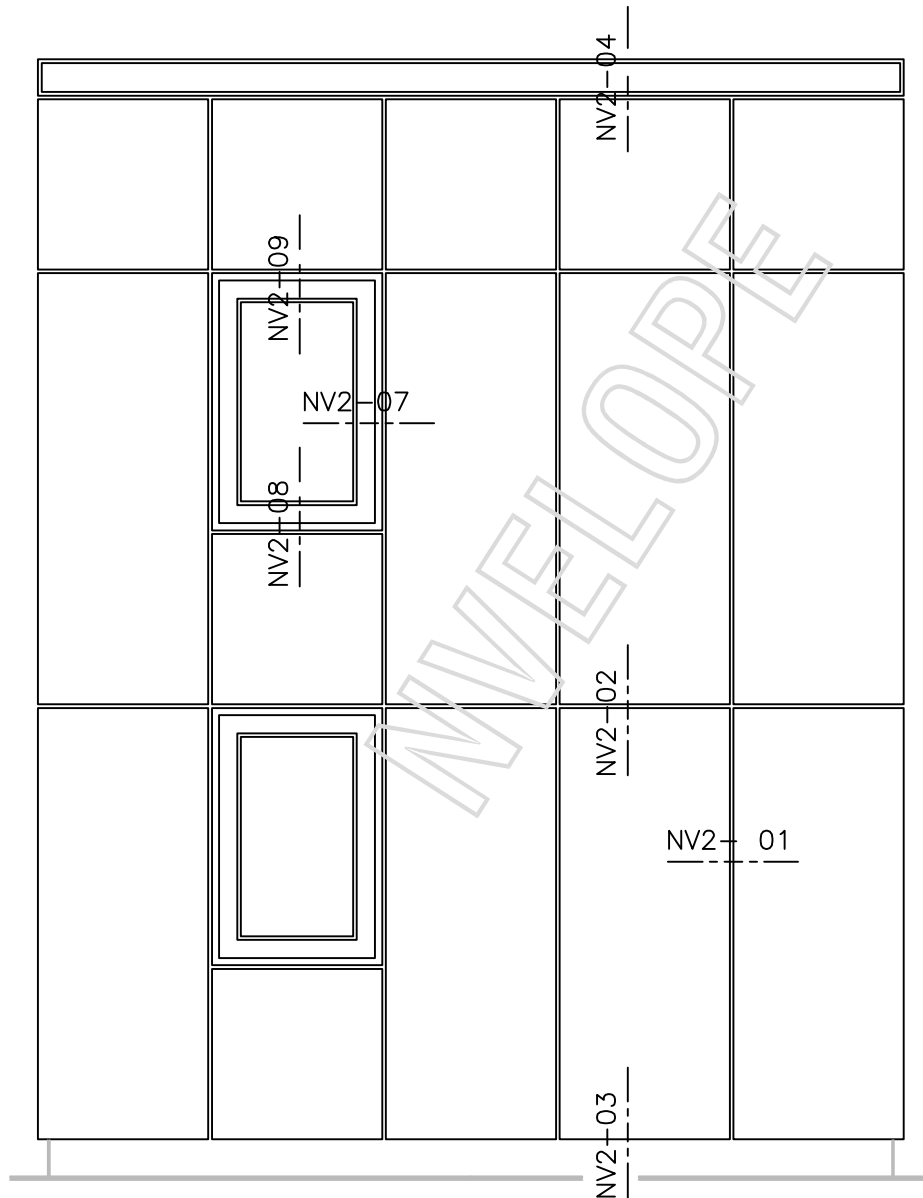
System:- NV2



BRACKETS	Adjustment range for each bracket (mm)	
Nvelope 60	from 62	to 102
Nvelope 90	from 92	to 132
Nvelope 120	from 122	to 162
Nvelope 150	from 152	to 192
Nvelope 180	from 182	to 222
Nvelope 210	from 212	to 252
Nvelope 240	from 242	to 282
Nvelope 270	from 272	to 312
Nvelope 300	from 302	to 342

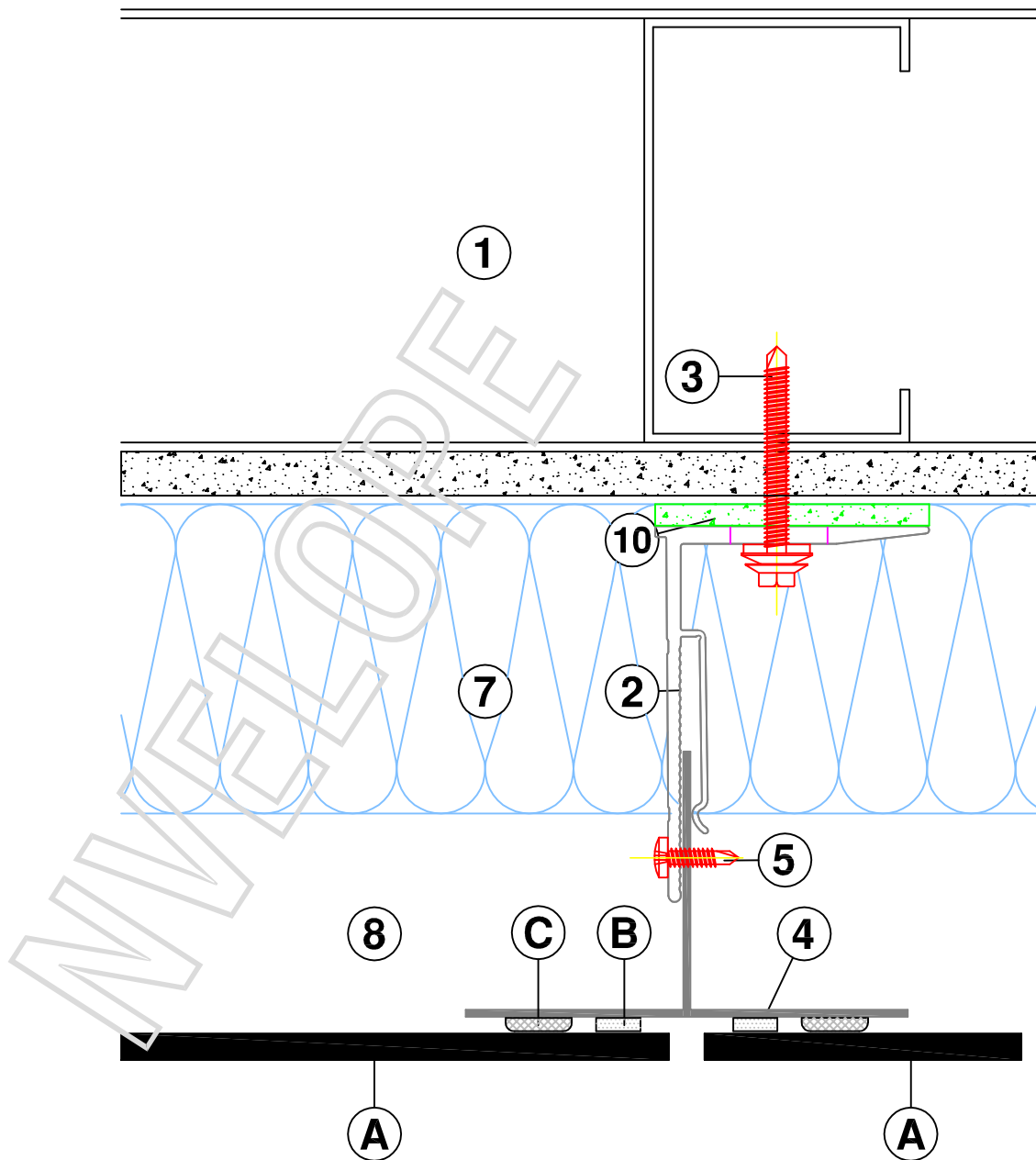
HORIZONTAL SECTIONS
TOLERANCES FOR ADJUSTMENT

System:- NV2

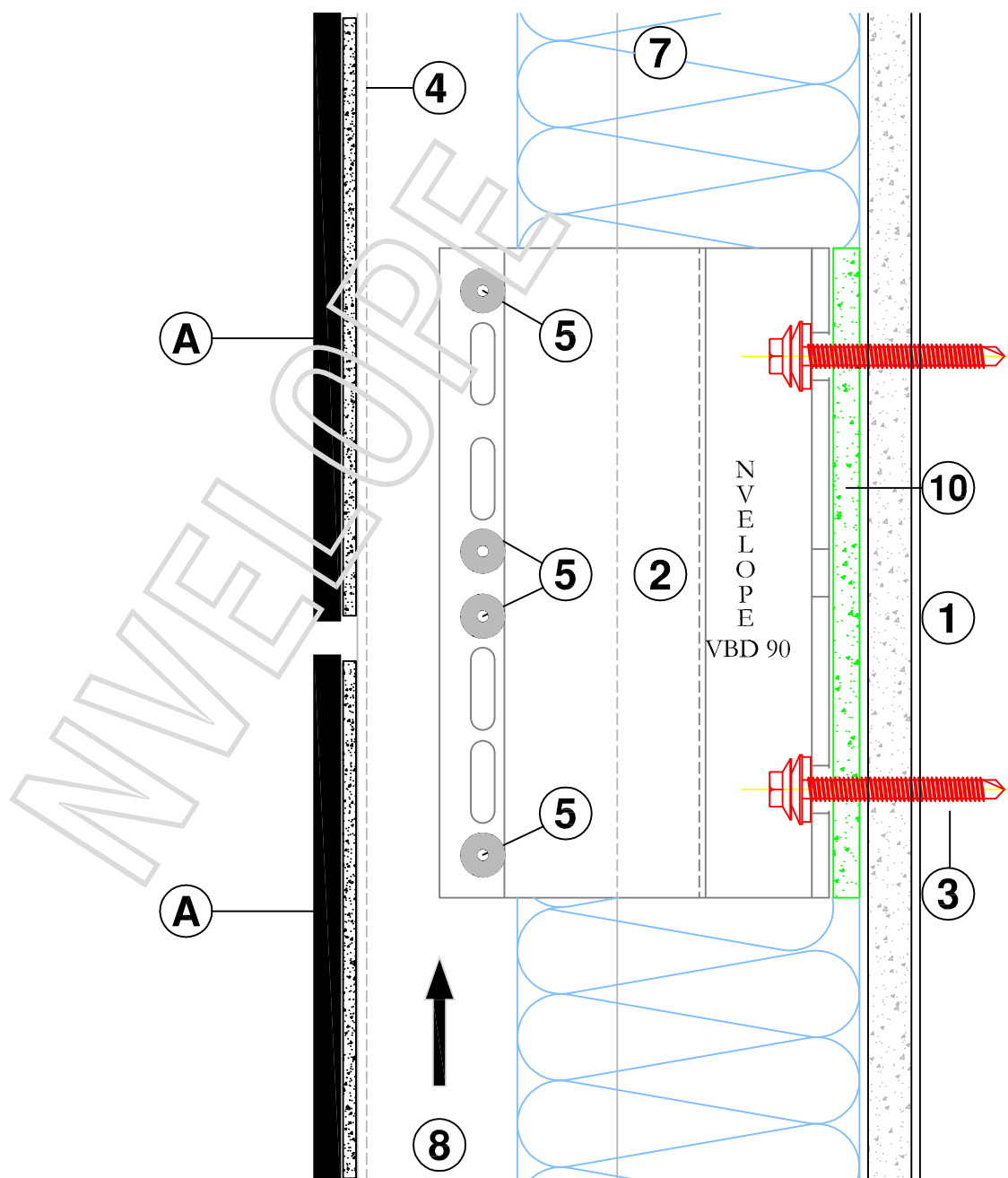


VIEW OF CLADDING - DETAIL LOCATIONS

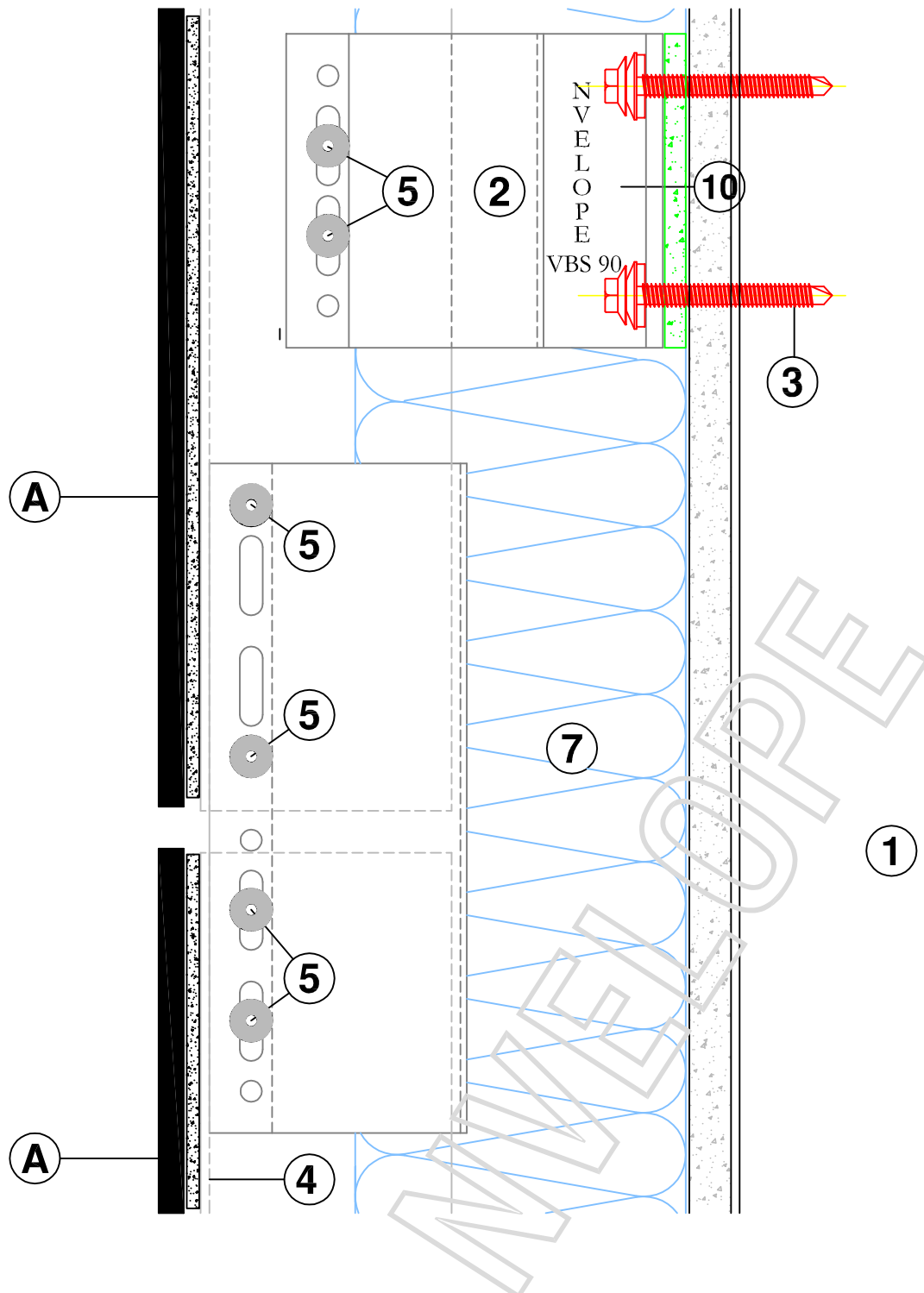
System:- NV2



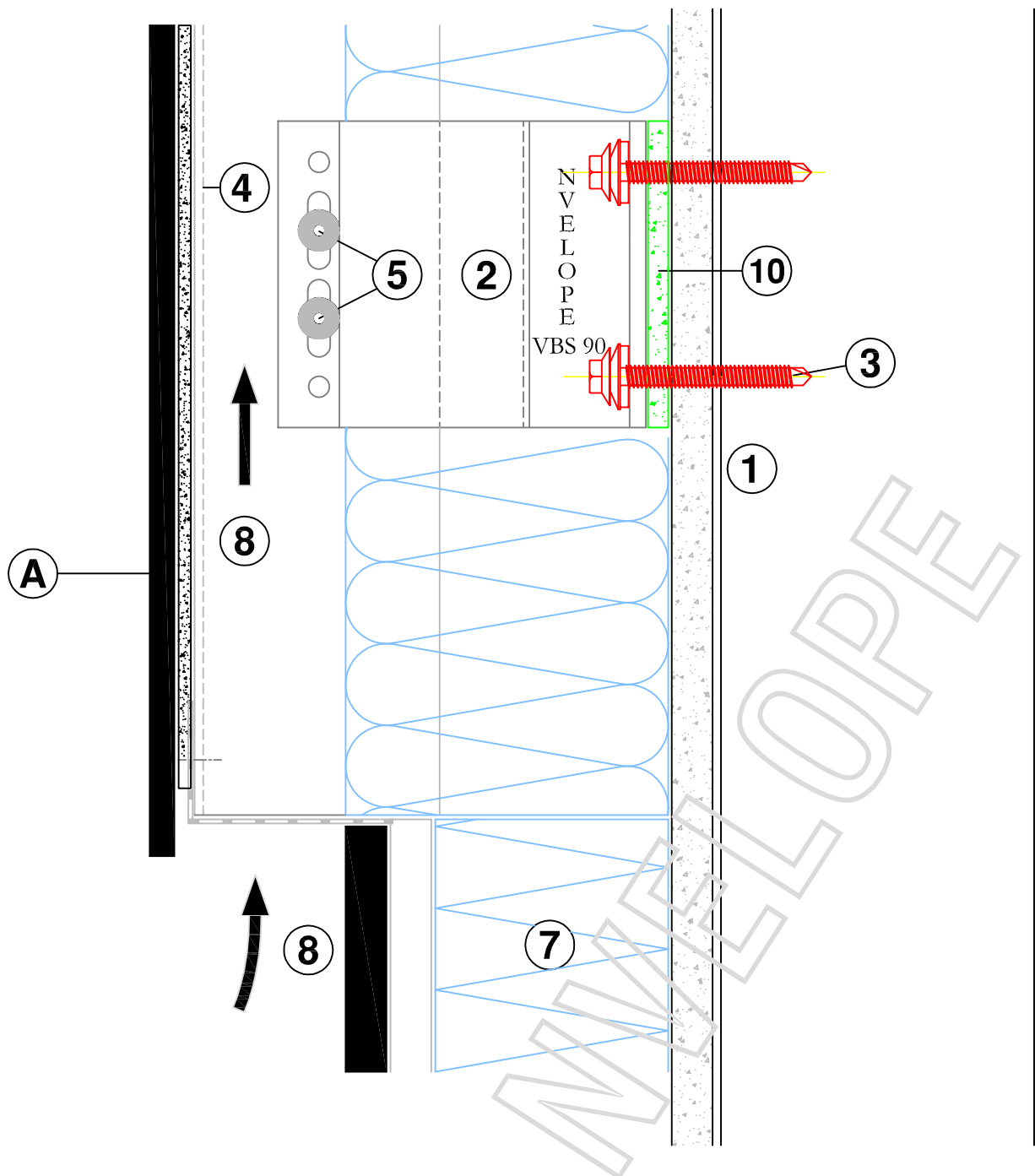
HORIZONTAL SECTION - NVELOPE 90



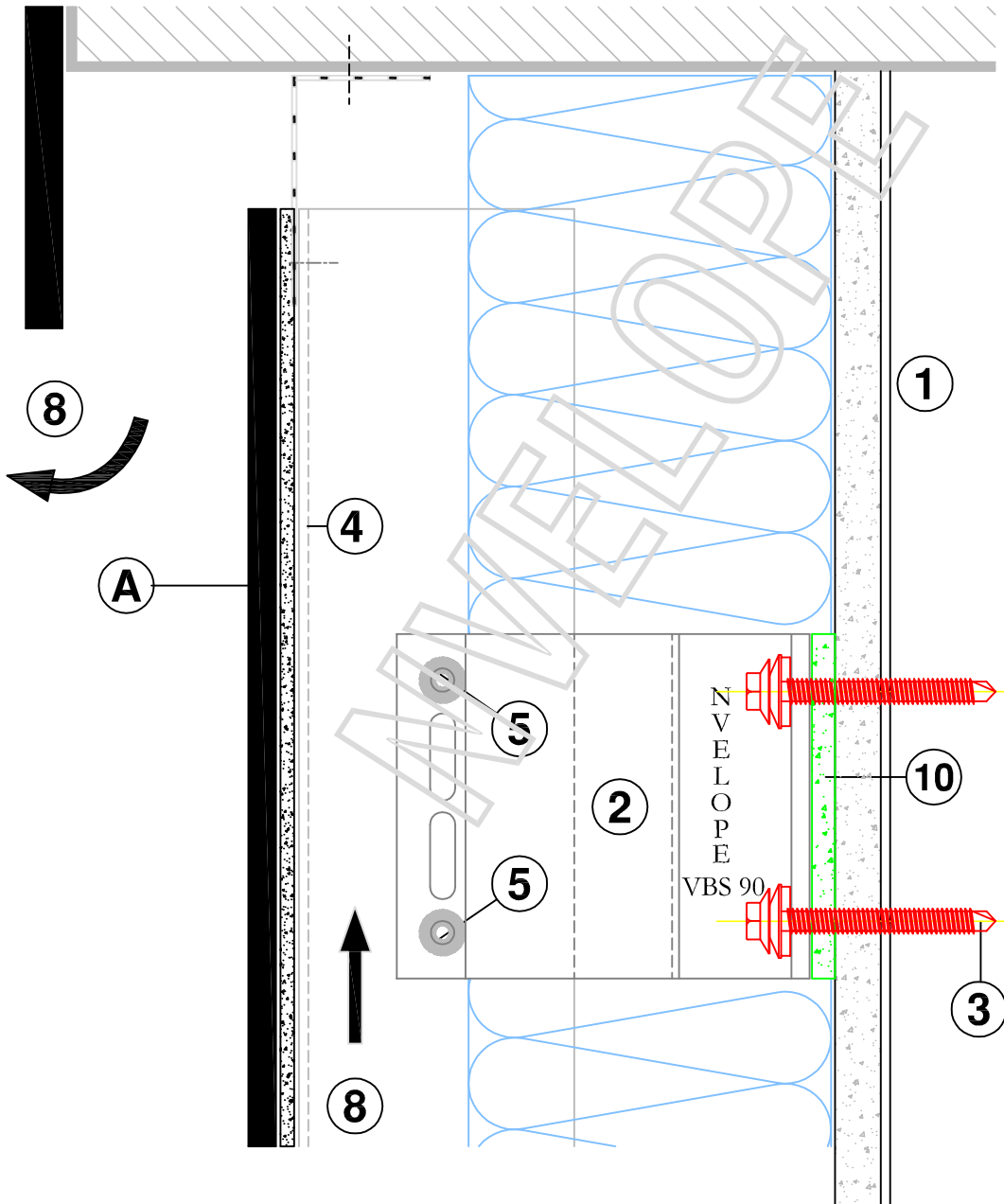
VERTICAL SECTION - NVELOPE VBD 90 FIXED POINT



VERTICAL SECTION - RAIL JOINT OF PROFILE

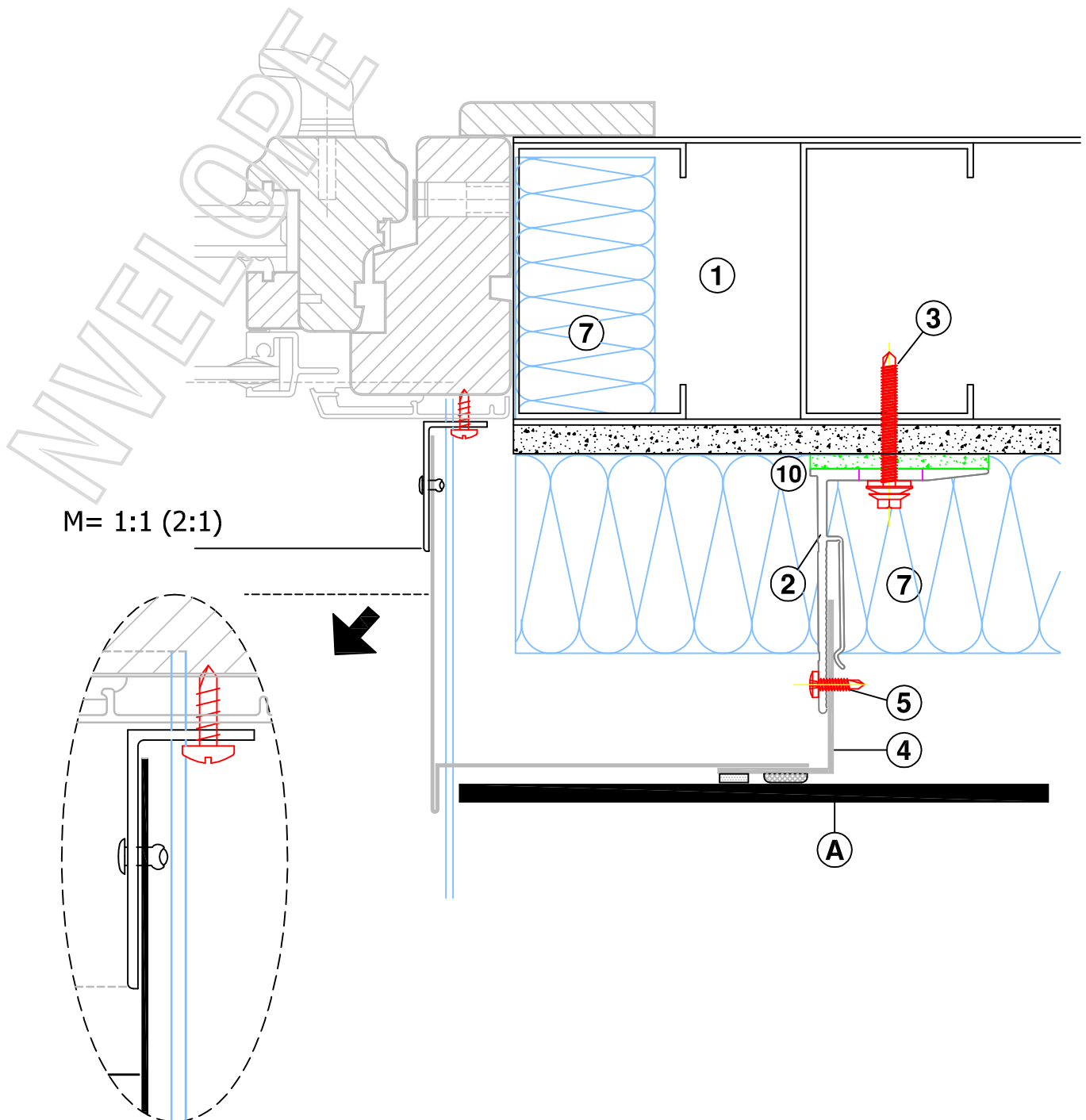


VERTICAL SECTION - BASE OF CLADDING



VERTICAL SECTION - TOP OF CLADDING

System:- NV2



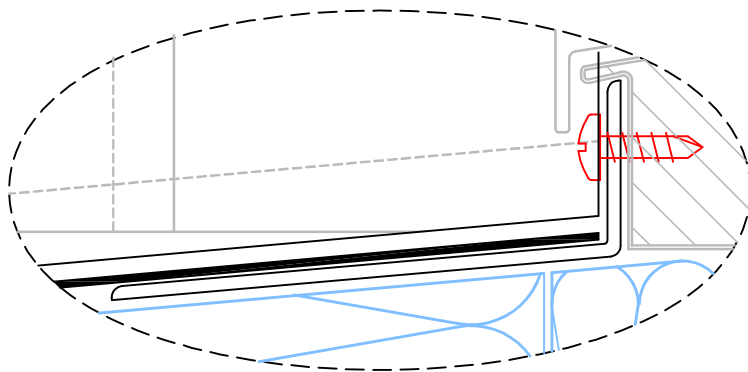
HORIZONTAL SECTION - WINDOW JAMB DETAIL

NVELOPE RAINSCREEN SYSTEMS Ltd - tel - 01707 333396 - fax - 01707 333343

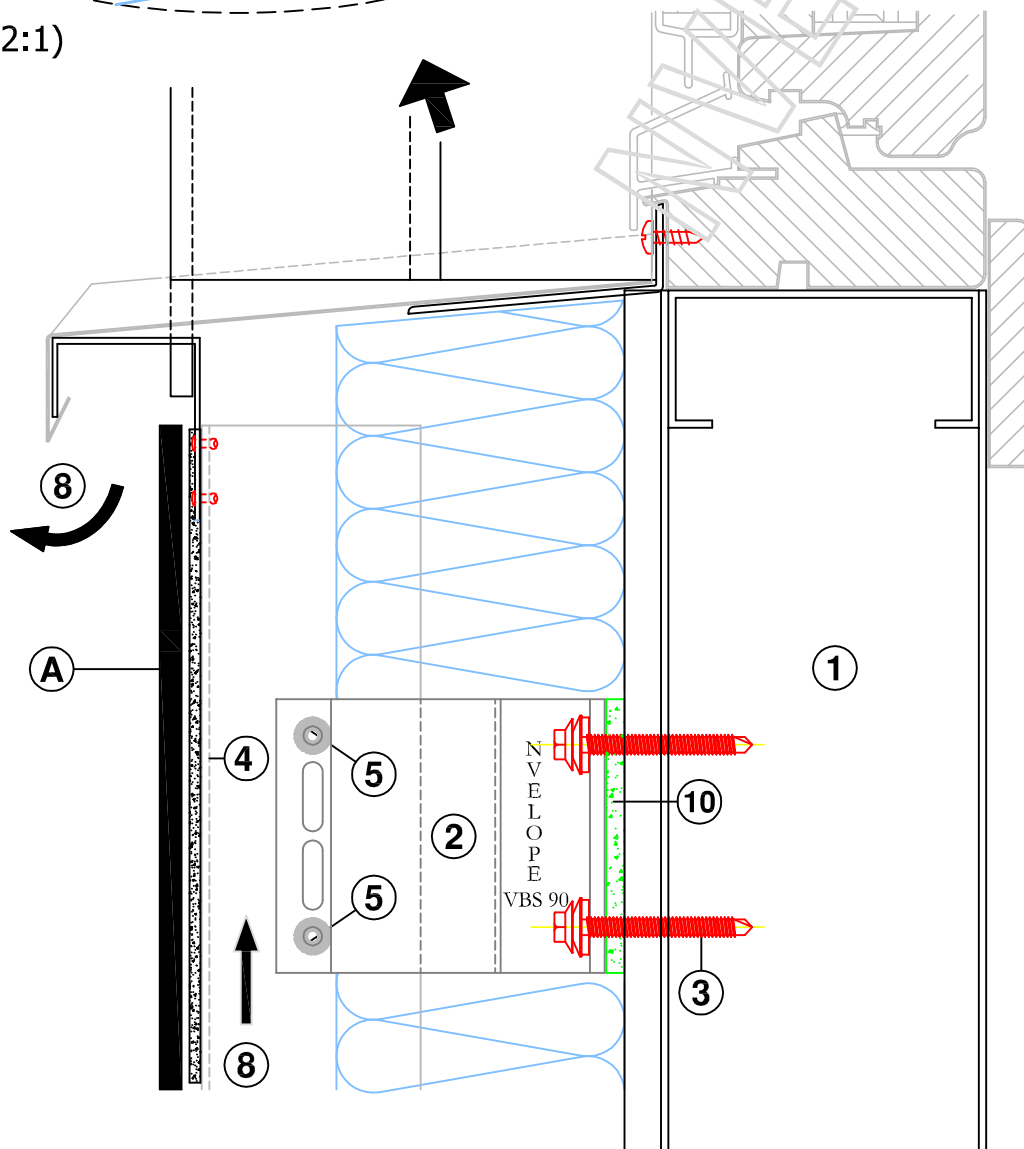
nvelope.com

Detail Sheet :- NV2 - 07

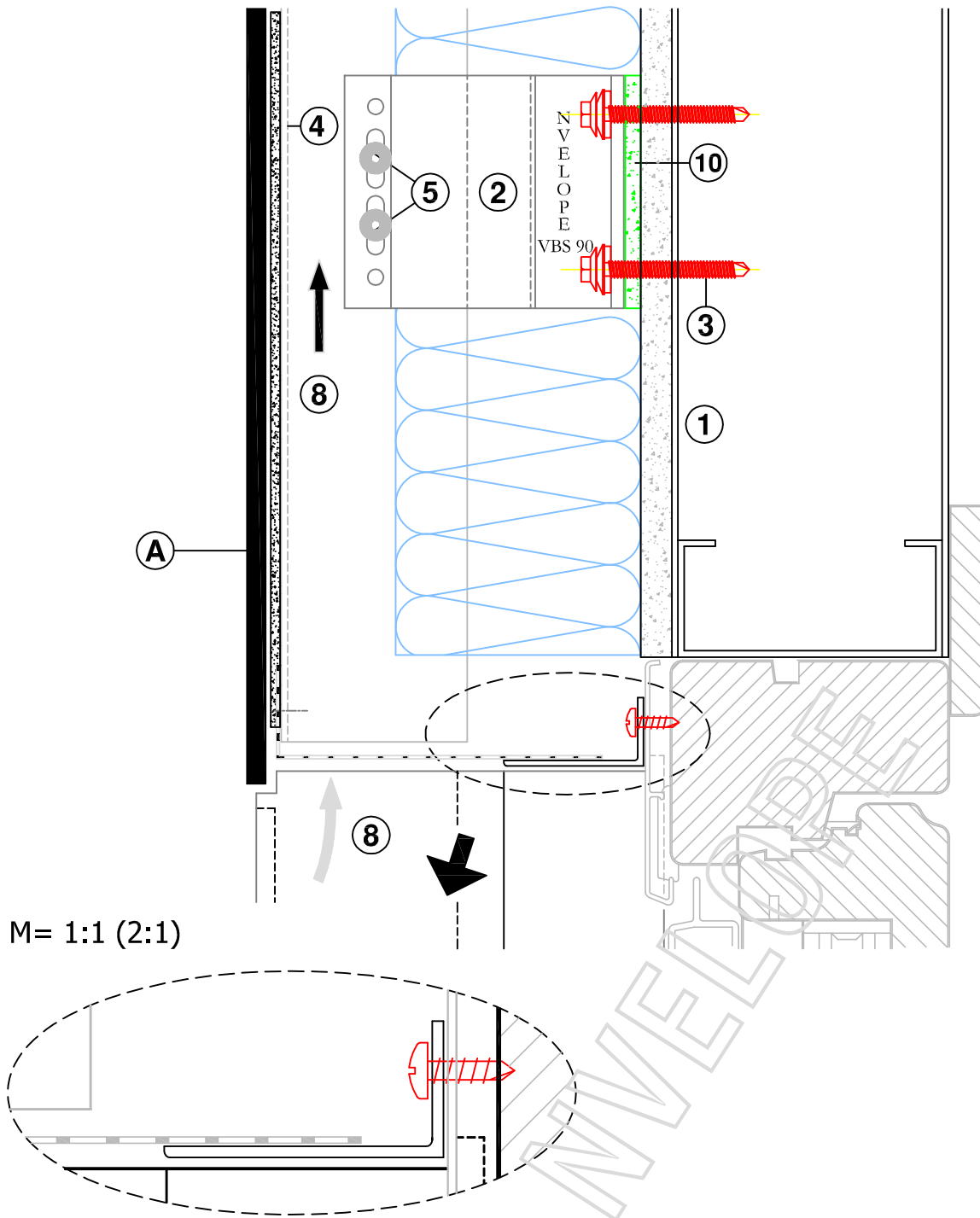
System:- NV2



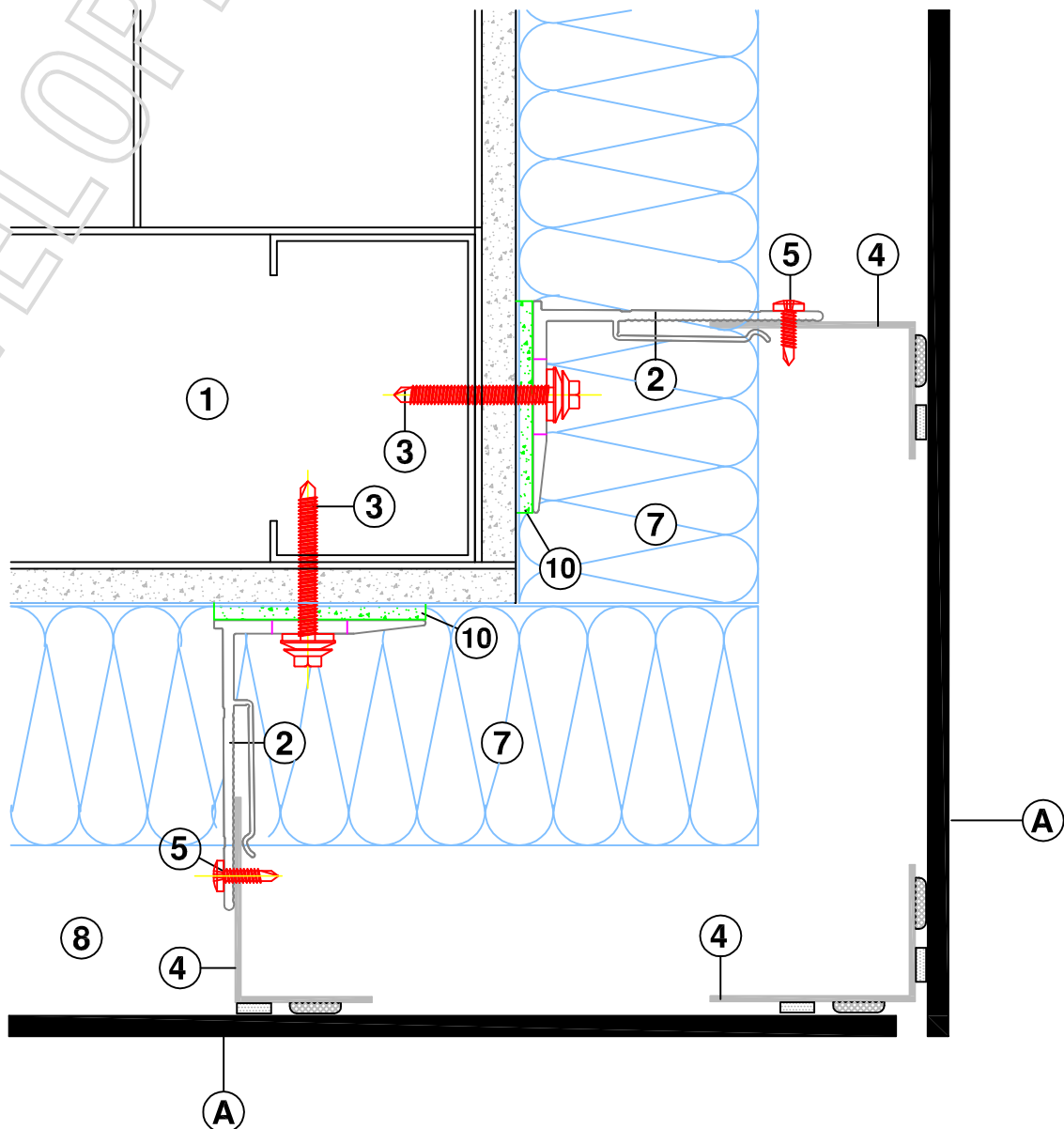
M= 1:1 (2:1)



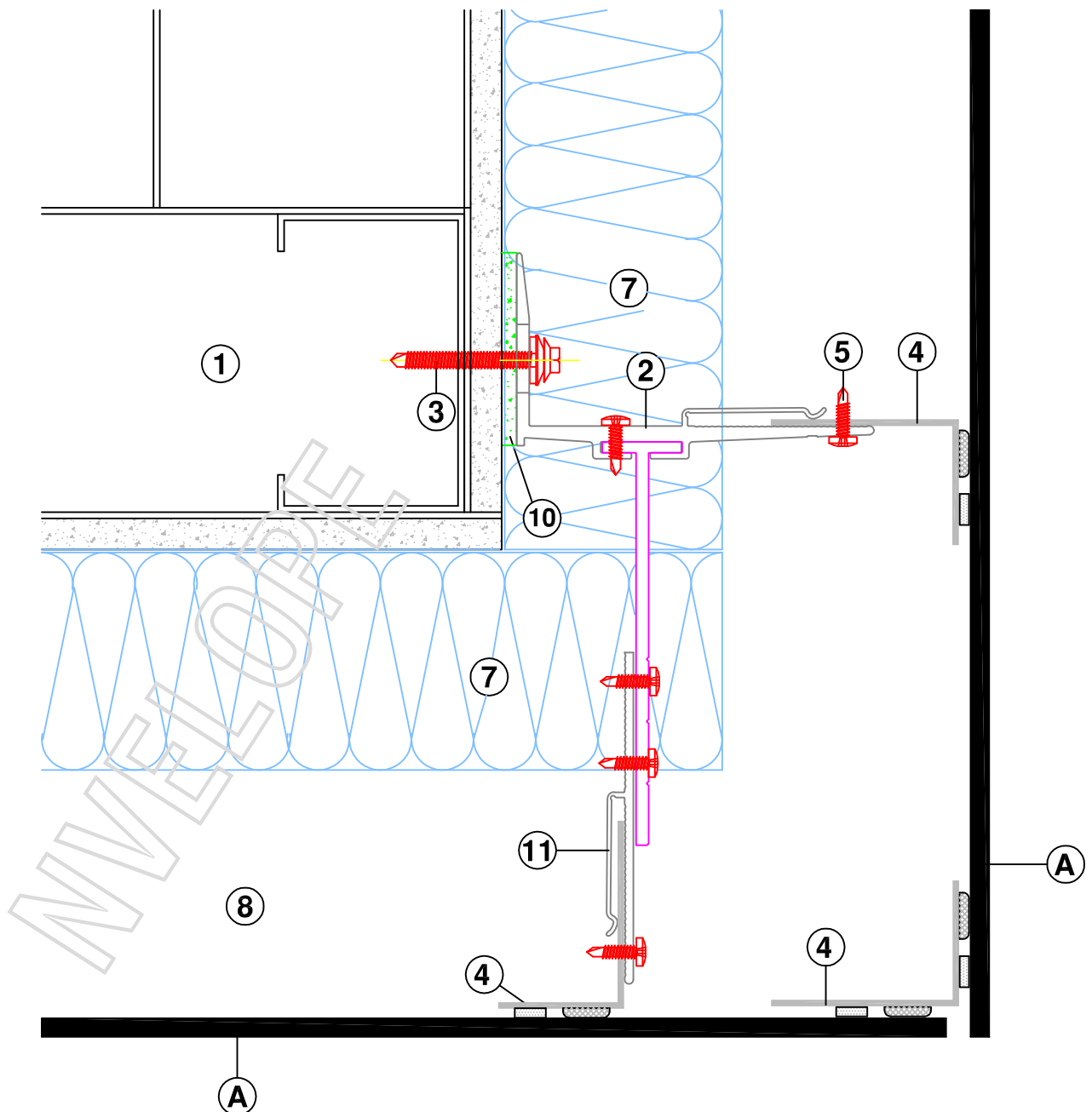
VERTICAL SECTION - WINDOW SILL DETAIL



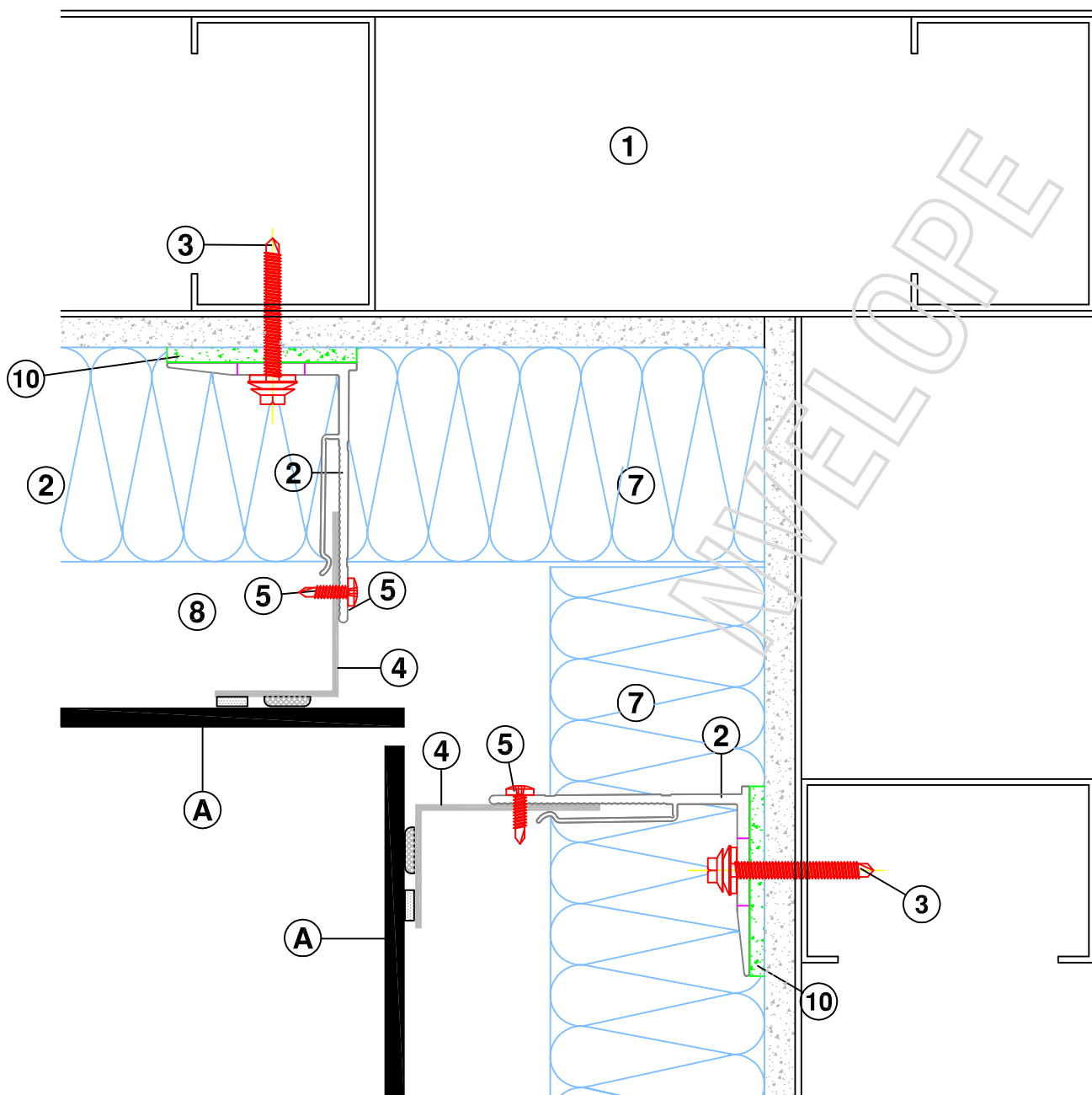
VERTICAL SECTION - WINDOW HEAD DETAIL



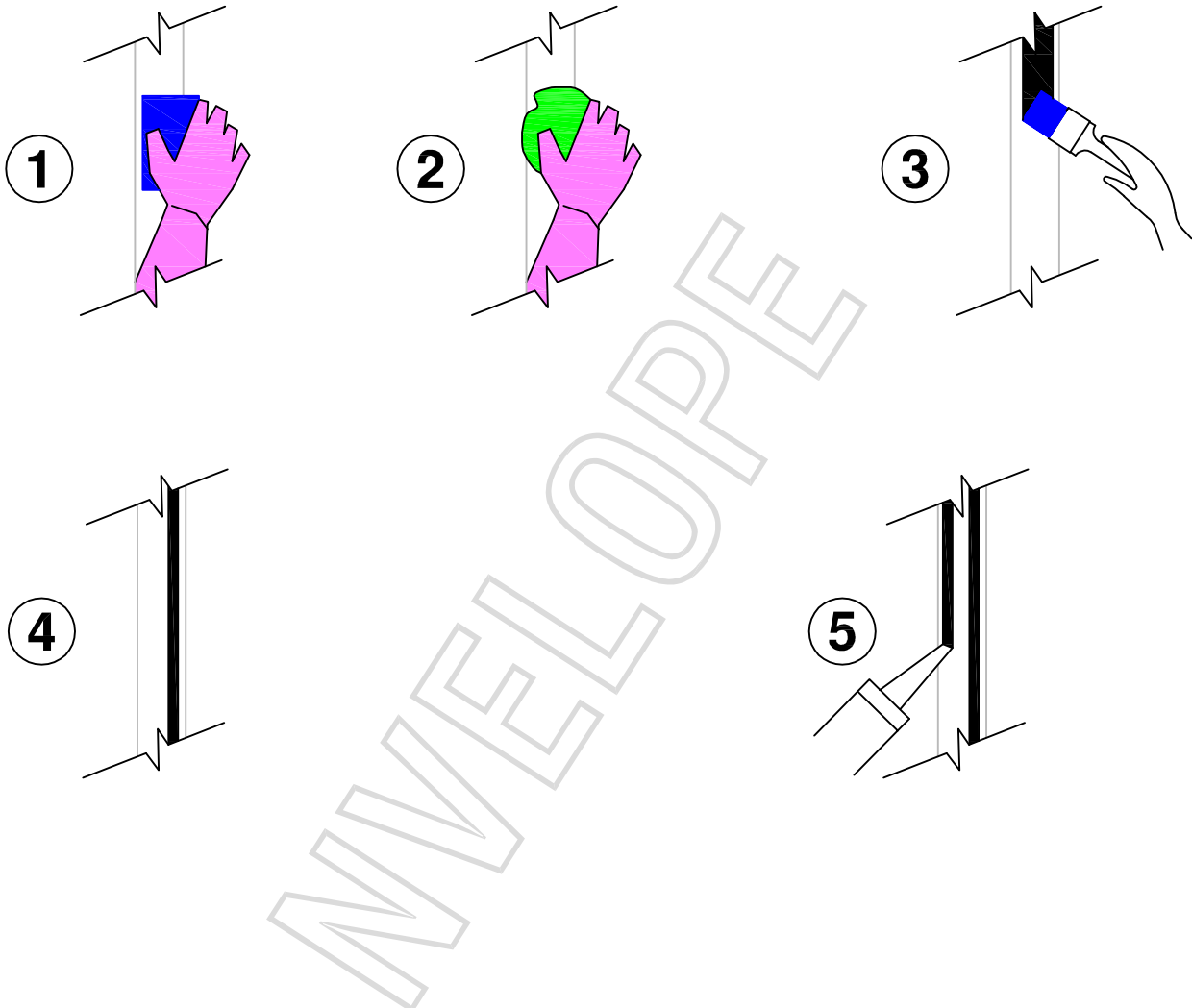
HORIZONTAL SECTION - EXTERNAL CORNER



HORIZONTAL SECTION - EXTERNAL CORNER - WITH CORNER BRACKET



HORIZONTAL SECTION - INTERNAL CORNER



- 1 ABRASE RAIL AND BACK OF CLADDING
- 2 CLEAN WITH SIKA CLEANER
- 3 APPLY PRIMER TO RAIL AND CLADDING
- 4 APPLY SIKA DOUBLE SIDED TAPE
- 5 APPLY SIKA ADHSIVE TO RAIL
- 6 OFFER UP CLADDING AND PUSH INTO PLACE ON RAIL

SIKA ADHESIVE SYSTEM USE