

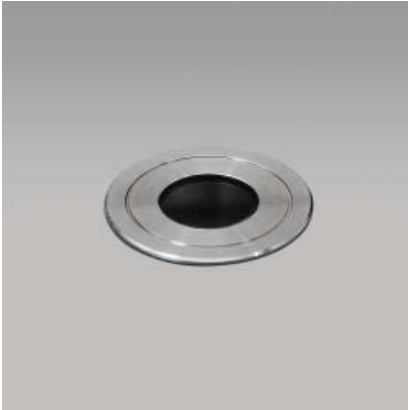
INSPIRATION WITH LUCCAS

JOHN CULLEN
LIGHTING FOR HOUSE AND GARDEN

The LED Lucca is a cool to the touch versatile accent light providing a warm 2700 Kelvin shaft of light. The Lucca can be used as an uplight, downlight and step washer, adding a dramatic layer to any lighting scheme and enhancing architectural details, whether contemporary or traditional. Its compact size (55mm deep) enables you to use it even when recess space is tight. This energy efficient LED fitting also runs at an incredibly low 1w, saving money on your energy bills.

Source Type: LED
Lumens: 64 Lm
Watts: 1w
Dimmable: 0-10v dimmable
Supply: 700mA
Beam widths: Narrow 8° and medium 30°

Here are some inspiring ideas of how to use the Lucca in your home.



THE LUCCA

The Lucca is available in bronze, nickel and stainless steel (marine grade). An external IP rated version is available for use in the garden and wet areas.



OPEN UP BAY WINDOWS

Use Luccas to uplight shutter boxes to emphasis ceiling heights and cornice details, ensuring the window space is not lost at night.



ADD DRAMA TO A STAIRCASE

Washing light across each step and uplight the space beyond to draw your eye beyond. At 1w per fittings, this whole scene is lit with just 14 watts.



FIREPLACE FOCAL POINT

Draw the eye to the fireplace by uplighting the fire surround. This creates a focal point in the room even when the fire is not lit.



MORE THAN JUST A CORRIDOR

Inject life into a utilitarian space by introducing Luccas in long slot niches, to uplight and downlight, widening the sense of space.



CREATIVE BATHROOM DESIGN

Add niches downlit with Lucca Externals to a bathroom to create depth and texture - an ideal secondary layer of soft lighting for late evening bathing.

For more inspirational lighting ideas, visit the Project Showcase section of our website, by clicking [here](#) or visit the showroom. You can also book an appointment with one of our lighting designers by calling the Design Secretary on 020 7371 5400.

WWW.JOHN CULLEN LIGHTING.CO.UK