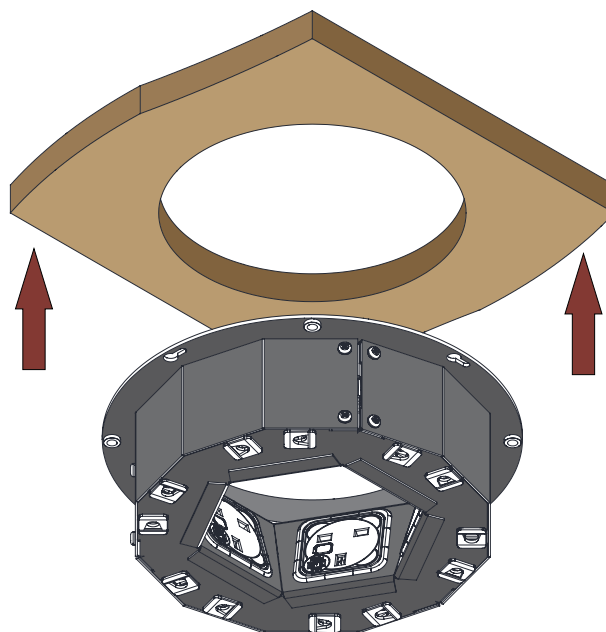
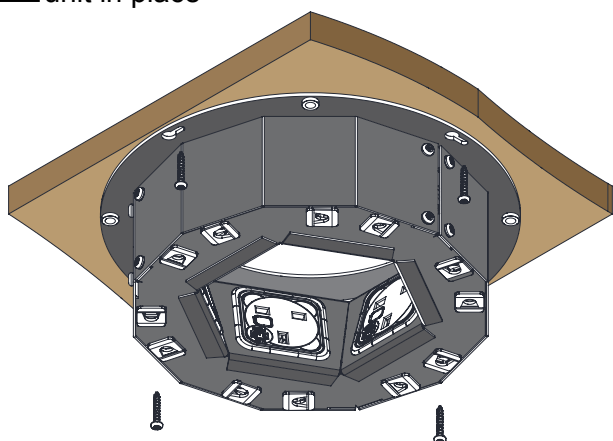


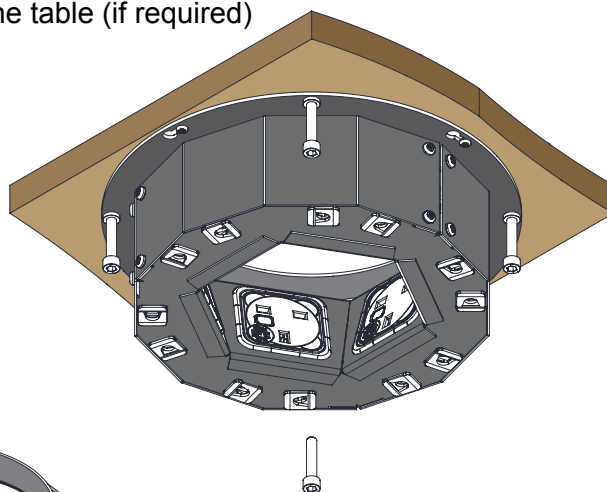
1 Cut suitable hole (180mm) and fix HX-box to underside off table



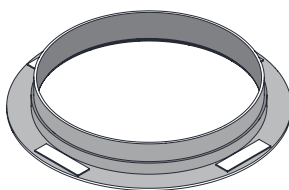
2 Use 4 suitable wood screws to fix the unit in place



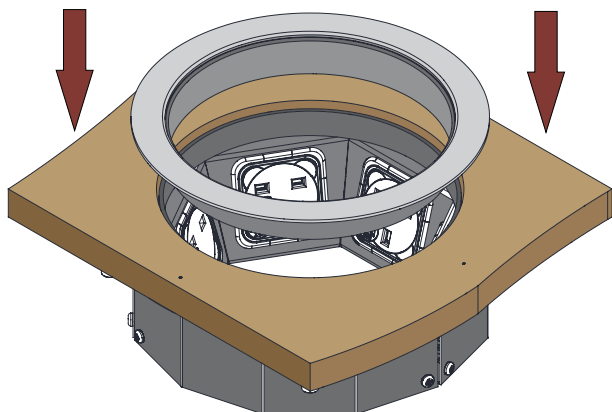
3 Use 4 x M6 x 30mm caphead screws to jack the HX-box from the underside of the table (if required)



4 Remove the adhesive backing from the 4 adhesive pads on the underside of the mounting collar



5 Fit the mounting collar in position as shown



6 Put lid into place

