



Health Technical Memorandum 64: Sanitary assemblies

Introducing Acorn Powell Ltd

- A UK company based in Gloucester
- Manufacturer and distributor of stainless steel products
- HTM64 products made to custom requirements
- Economy products where HTM64 standards are not specified
- Specialist products for Care Homes and Hospitals

This brochure illustrates a few of our popular products.
Please see our full range at our website:

www.acornpowell.co.uk

or call us on 01452 721211 for advice or catalogues.

Disposal Units

HTM64

DU HS Disposal Unit with Sink 1600 x 600



DU H Disposal Unit with Plain Top 1000 x 600



Complete with

- ◆ 110 mm outlet spigot with optional "P" or "S" trap
- ◆ Right or left hand hopper with full rim flushing and top or rear entry
- ◆ Top or back entry flush pipe, optional plastic or stainless steel cistern
- ◆ Bowl size (DU HS) 500 x 400 x 200 mm deep (tap holes as required)
- ◆ Flush grated waste
- ◆ Wall mounting brackets (front support legs available as an optional extra)

Also available

- ◆ DU wall mounted disposal unit
- ◆ PS H Plaster Sink with drainer 1200mm long with left or right drainer
- ◆ ST A, B & C Hospital Sink Tops
- ◆ SK1 and SK2 Hospital Pattern Sinks
- ◆ Taps, valves and traps for all units

JU Janatorial Unit



Size: 500 x 600mm
Complete with tap with
swivel spout

For more Hospital products please visit our web-site. Our range includes Hospital Sinks, Grab Rails, Taps etc which are not shown in this brief introductory leaflet.

Surgical Scrub Up Troughs SU H1, SU H2, SU H3

Available in Fully Radiused HTM 64 or Economy designs.
Both designs available with High Back or Low Back with left or right hand wastes
Standard or HTM 64 pattern taps can be provided



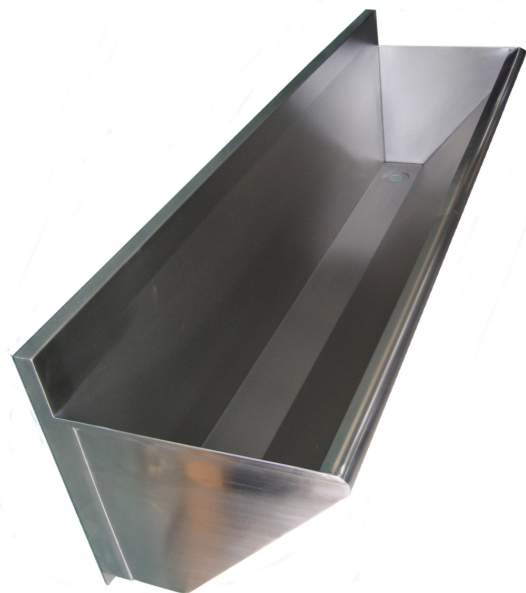
Two user scrub up trough 1600mm long. Illustrated are:
High Back with lever operated taps fitted (optional extra)
Low Back (taps would normally be mounted to the wall above)



Interior view of a two user scrub up trough showing the curved profile. This may be compared (right) with our Economy Scrub Up Trough.



HTM 64 Fully Radiused Scrub Up Trough



Economy Scrub Up Trough

Bedside Care Units



Above unit includes an optional bed pan wash down spray



We manufacture several innovative designs of bedside care units which are particularly suited to use in critical care units. These are made to special order. An illustrated catalogue is available (e-mail sales@acornpowell.co.uk) and a video demonstration may viewed at: <http://www.youtube.com/watch?v=pBlnDgMNaGg>

Bariatric Toilet

A new addition to our range is the Bariatric Toilet model 122. This unit fills the increasing demand for products suitable for the larger patient and has been tested to 1000Kg. The Bariatric Toilet is manufactured from heavy grade stainless steel coated with a white **EnviroGlaze®** finish to produce a "ceramic look" toilet. It is illustrated here with an optional "Big John" toilet seat and cover. Full details are available at our web-site.

