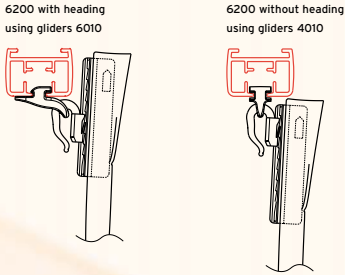
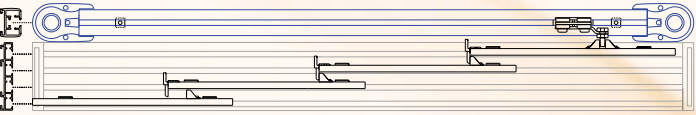


Curtain hanging examples



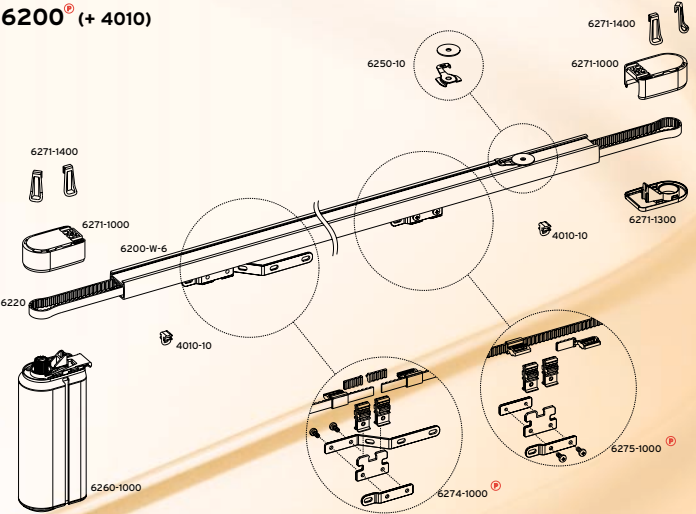
Combination product example



6200 electric rail in combination with 7300 roller panel system.

Exploded View

6200® (+ 4010)



G-Rail is a registered Trademark. **G-RAIL®**

6200

ELECTRIC CURTAIN RAIL
6200



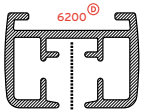
G-RAIL®
ALUMINIUM RAIL
> **by Goelst**

Components

Product design and specification changes reserved.

GLIDING CHANNEL		ACCESSORIES			
	4010-10 [®] glider		4025 glider with hook		6271-1400 pulley hook
		6274-1000 overlap carrier large			
+accessories				2 x 1 x	
		6275-1000 overlap carrier small		6260-1000 motor unit	
+accessories					
		6220 drive belt			
		4030-20 roller glider			
		6010 [®] projection glider total curtain weight < 8 kg			
		6200-RS wall return set (for wall and ceiling mounting)			
		6250-20 ceiling fixing clamp incl. of screw and plug total curtain weight < 25 kg			
		6235 ceiling fixing plate total curtain weight < 100 kg			
		2015-10 2015-07,5 2015-05 extension bracket in combination with clamp 6250-10			
		6017 [®] adjustable wall bracket			

ELECTRIC CURTAIN RAIL
6200



■ = standard item
® = registered trademark
® = patented product

G-RAIL®

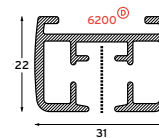
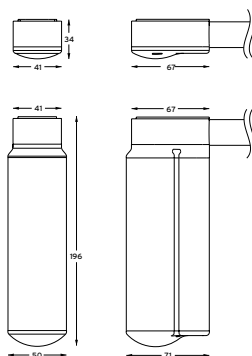
Space for dealer address

03/2003



6200 is a low voltage (24 V) electrically operated curtain track that is delivered complete ready assembled with infrared remote control as standard. Suitable for both 110 and 240 Volt supply the system can be installed without the need of an electrician. Setting the end of travel positions is easily carried out using the infrared transmitter supplied. Elegant in design, a powerful 24 Volt motor and simplicity to combine several systems make 6200 suitable for the most demanding interior applications.

Standard colour: White RAL 9010. Special colours on request.



Specification Guide

Material:
Aluminium 606035-T6-F22 (higher specification than DIN 1725).
Shape and size tolerances are in accordance with DIN 17615.
Anodised or powder coated in accordance with the Qualicoat standard.
Powder coat white RAL 9010.
Profile weight: 567 gm per linear metre.

Accessories:
Assembled with 10 to 16 gliders per metre, using standard glider 4010 up to a maximum curtain weight of 100 kg. Maximum weight per glider: 1 kg. Upstand headings can be achieved using click glider 6010. This option has a maximum curtain weight of 8 kg.

Bending:
Minimum radius: 20 cm.

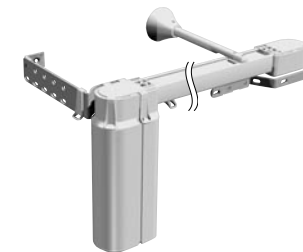
Installation:	max. curtain weight	fixing centres
Bracket		
6250-10	25 kg	30 - 50 cm
6235-W	100 kg	50 - 90 cm
2015 + 6250-10	25 kg	30 - 50 cm
6017	10 kg per bracket	to suit curtain weight (up to 100 kg).

Load table 6200 with glider 4010

1m 2m 3m 4m 5m 6m 7m 8m 9m 10m 11m 12m 13m 14m 15m 16m 17m 18m

Straight	kg	10	20	30	40	50	60	60	60	60	60	60	60	60	60	60	60
Straight(Tandem)	kg						70	80	90	100	100	100	80	80	80	80	80
1 curve	kg	10	20	30	40	50	50	50	50	50	50	50	50	50	50	50	50
1 curve (Tandem)	kg						60	70	80	90	90	90	90	70	70	70	70
2 curves	kg	10	20	30	40	45	45	45	45	45	45	45	45	45	45	45	45
2 curves (Tandem)	kg					50	60	70	80	80	80	80	80	60	60	60	60
1 large curve	kg	10	20	30	40	45	45	45	45	45	45	45	45	45	45	45	45
1 large curve (Tandem)	kg					50	60	70	80	80	80	80	80	60	60	60	60

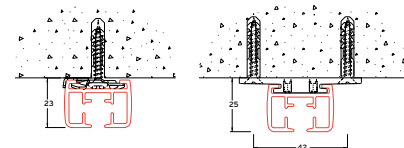
This table indicates the maximum total curtain weight.
Maximum weight per glider 4010: 1 kg.
Tandem = dual motor unit.
Large curve = gradual curve with large radius.



ELECTRIC CURTAIN RAIL
6200

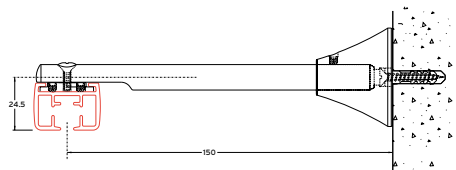


Installation



ceiling mounted with brackets 6250-10

ceiling mounted with brackets 6235



wall mounted with adjustable bracket 6017

6200® > A breakthrough in technical engineering and design.



When using bracket 6235 an extra bracket is required for each curtain stacking position.
When using fixing bracket 6017 determine number of brackets on first metre of rail using the following formula:
Curtain weight = number of brackets on first metre.
10 kg

Special properties:

- > Silent operation.
- > Guaranteed product.
- > Supplied with infrared remote control as standard.
- > Suitable for light, medium and heavy weight curtains.
- > Delivered pre-wired for simple 24 Volt installation.
- > Easy control and setting of the system using infrared hand sender.
- > Colour co-ordinated components.
- > Variable speed motor facility, launching/docking speeds and distances pre-programmed by Goelst or approved distributor. Standard travel speed set at 15 cm / second.
- > Wide program of control options.

