

GENIE provides an excellent solution for in-desk power and data requirements. The one size flush mounted GENIE can accommodate up to four power sockets along with several different combinations of data and AV. Data and AV components can be fitted post installation.

GENIE can be fitted from the top by only one person negating the need to work under the desk. The hinged lid has two scalloped recesses, one at each end, to allow easy and free access for power and data cables.

GENIE is fitted using our POWERUNIT which can incorporate all our standard module components. Standard colour is white.

All **OE** Electrics products are manufactured to enable compliance with BS6396 or BS7671 where relevant.

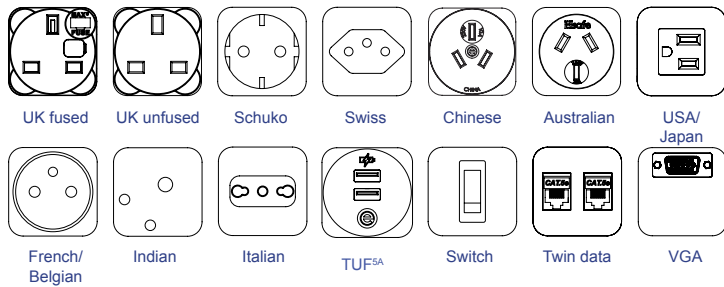
UK sockets incorporate fuses as standard with colour coded inserts indicating fuse rating.

USPs

- Can accommodate up to 4 power, 4 data & AV
- Designed with the ability to be fitted by ONE person
- Available with TUF charger
- Unique locking arm system ensures GENIE is securely fitted
- BS6396 compliant (where applicable)
- Fits into desk/tables with a thickness of 18-32mm
- Available with power sockets from different nationalities

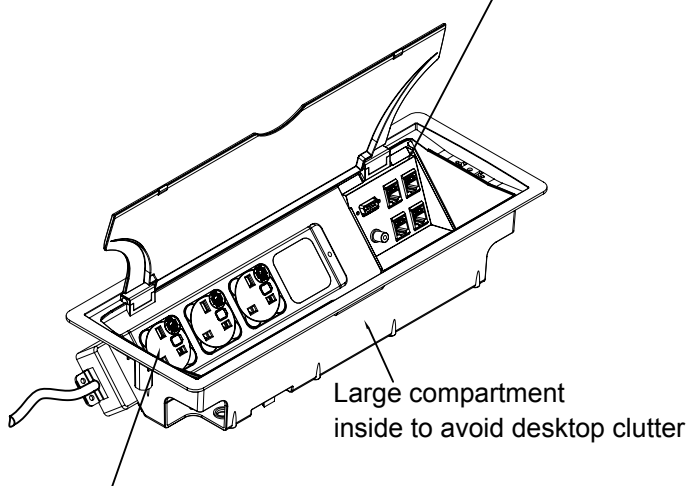


Common Modular Components*



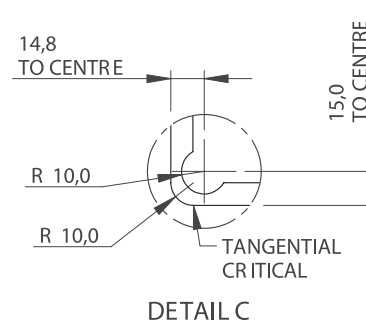
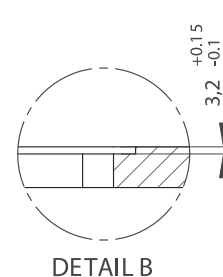
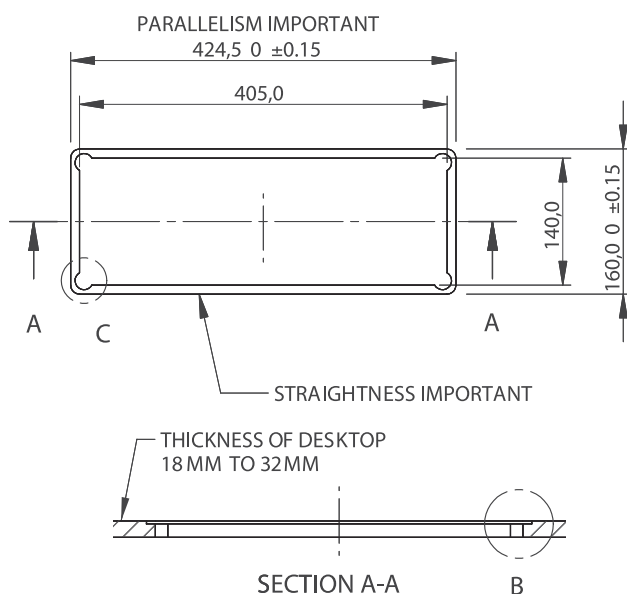
*See website for more

Data cartridge can be removed to allow easier loading on-site (available with keystone apertures)



Power requirements can be configured to suit specifications for most worldwide countries

Cutout instructions



Features

Configuration:

Power only / Data only / Combined (Power & Data/AV)

Insulation:

Re-inforced insulation

Earth Bonding:

A rewirable external earth terminal allows the removal/change of earth bonding leads without dismantling the unit.

Fusing: (to enable compliance to BS6396)

5 x 20mm anti-surge ceramic fuses, with colour-coded fuseclips to denote the rating (3.15A/5A)

Testing:

100% testing - continuity, polarity, insulation & earth

Soft Wiring (power)

Power wired to Wieland GST connector allows starter cables to be changed to suit requirements, especially useful during moves and changes (CHURN)

Soft Wired Data

As well as soft-wired power, GENIE can accommodate soft wired data. Using our inline couplers, data cables can be changed "on-site" to accommodate changes in length often associated with churn. Simple on-site installation of pre-terminated data where branded connectivity required.