



Brochure Hotline  
Tel: +44 (0)800 028 2134  
Fax: +44 (0)115 932 9513  
Email:  
brochures.uk.pipelines  
@saint-gobain.com

Technical Enquiries  
Tel: +44 (0)1952 262529  
Fax: +44 (0)1952 262592  
Email:  
technical.soildrain.uk.pipelines  
@saint-gobain.com

Sales Enquiries  
Tel: +44 (0)115 930 0630

Head Office  
Lows Lane  
Stanton-by-Dale  
Ilkeston  
Derbyshire DE7 4QU  
Tel: +44 (0)115 930 5000  
Fax: +44 (0)115 932 9513

Other products and services available from Saint-Gobain Pipelines:



## Ensign

Cast iron above and below ground drainage system  
BSI Kitemark approved to BS EN 877.

Used for soil and waste, rainwater, suspended, buried and bridge drainage applications, providing lifetime service for commercial and public buildings.

## Ensign EEZI-FIT

A new range of cast iron push-fit fittings and couplings in 100 diameter, kitemarked to BS EN 877 for gravity sanitary installations.

## Timesaver

Cast iron above ground system BSI Kitemark approved to BS416 part 2, used for soil and waste refurbishment, and external soil stacks for traditional appearance.

Cast iron below ground system BSI Kitemark approved to BS437, favoured for under building drainage, and unstable ground conditions due to its superior strength performance.

## Classical – Classical Plus

Cast iron rainwater and gutter systems to BS 460 BBA Certified. Seven gutter profiles and circular and rectangular downpipes systems supplied in a black primer coat. Classical Plus is a standard range of gutters and downpipes available in a factory applied semi-gloss black finished coat for immediate installation.

## EPAMS

A complete syphonic rainwater system, consisting of steel syphonic roof outlets and cast iron pipework to BS EN 877 BBA certified.

## Integral and Integral Plus

A complete range of sewerage pipeline products available from DN80 to DN2000, fully compliant with the requirements of BS EN 598.

## Natural

A new generation of potable water pipeline products available DN80 to DN800 with a new revolutionary system of external protection, fully compliant with the requirements of BS EN 545.

Your local stockist is:

visit: [www.saint-gobain-pipelines.co.uk](http://www.saint-gobain-pipelines.co.uk)

The information given in this literature is, to the best of our knowledge, correct at the time of going to print. However, Saint-Gobain Pipelines is constantly looking at ways of improving their products and services and therefore reserve the right to change, without prior notice, any of the data contained in this publication. Any orders placed will be subject to our Standard Conditions of Sale, available on request.

© 2007 Saint-Gobain Pipelines

## Large diameter water pipes

Large diameter water pipeline products available DN900 to DN2000, fully compliant with the requirements of BS EN 545.

## Couplings and flange adaptors

Accommodating a wide range of external diameters and pipe materials in accordance with British, European Standards and ISO 9001 requirements. A diversified range from wide tolerance fittings to dedicated products.

## Valves

A comprehensive range of valves and accessories suitable for water and sewerage applications. All valves are supplied in compliance with WRAS requirements where applicable, and manufactured in accordance with ISO 9001.

- Gate valves, resilient and metal faced DN50 to DN300
- Non return valves DN80 to DN300
- Tidal flap valves DN80 to DN600
- Air valves
- Fire hydrants

## Rapid flange

A business unit dedicated to offering fast and flexible service to M&E and pump market sectors – specialising in providing high quality flanged products and offering technical support and rapid response – [www.rapidflange.com](http://www.rapidflange.com)

## Induct Plus

An installation accreditation scheme, designed to give peace of mind and confidence to water utilities and contractors in the knowledge that the ductile iron pipeline that they have purchased will be installed effectively and in its optimum condition.

## Access covers and gratings

A comprehensive range of ductile iron access covers and gratings. For high performance products which meet the increasing demands from traffic to a purpose designed range for low density applications, Saint-Gobain Pipelines access cover products provide targeted solutions for the key civil engineering, utility and infrastructure sectors.

Saint-Gobain Pipelines

Cast Iron Drainage Systems

Ensign Specifier's Manual

CI/SfB

52.5

1h1

September 2007



# Ensign

## Specifier's Manual

COMPLETE CAST IRON DRAINAGE SYSTEMS  
FOR ABOVE AND BELOW GROUND

FOR A LIFETIME OF SERVICE IN  
COMMERCIAL AND PUBLIC BUILDINGS

INCLUDES

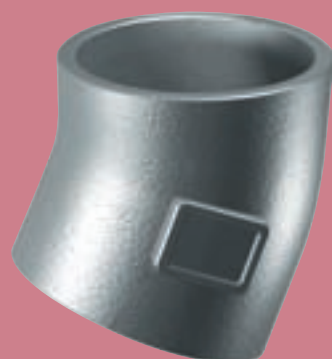
NEW ENSIGN EEZI-FIT



BS EN 877







## Ensign in-situ



### Liability

The Ensign manual is written for general guidance only. Therefore no responsibility can be accepted for any errors, omissions or incorrect assumptions.

Saint-Gobain Pipelines do not accept liability for any complaints on installations where components not manufactured by Saint-Gobain Pipelines are responsible.

Whilst every care has been taken to ensure that the information contained in this catalogue is correct, Saint-Gobain Pipelines or its agents do not accept responsibility for any errors herein.

Our policy is one of continuous improvement. We therefore also reserve the right to change or alter the specification of any product without notice.

### Copyright

© Saint-Gobain Pipelines. No part of this manual may be reproduced, stored in a retrieval system, or transmitted in any form, or by any means electronic, mechanical recording, or otherwise, without the written consent of the copyright owner.

### Head Office

Lows Lane, Stanton-by-Dale, Ilkeston,

Derbyshire DE7 4QU

Tel: 0115 930 5000 Fax: 0115 932 9513

Email: [innovations.uk.pipelines@saint-gobain.com](mailto:innovations.uk.pipelines@saint-gobain.com)

[www.saint-gobain-pipelines.co.uk](http://www.saint-gobain-pipelines.co.uk) (Click on Soil and Drain)

**LITERATURE HOTLINE – FREEPHONE 0800 028 2134**

*Note: Our policy of continuing product development and improvement necessitates that we reserve the right to modify designs shown in this brochure without prior notice.*