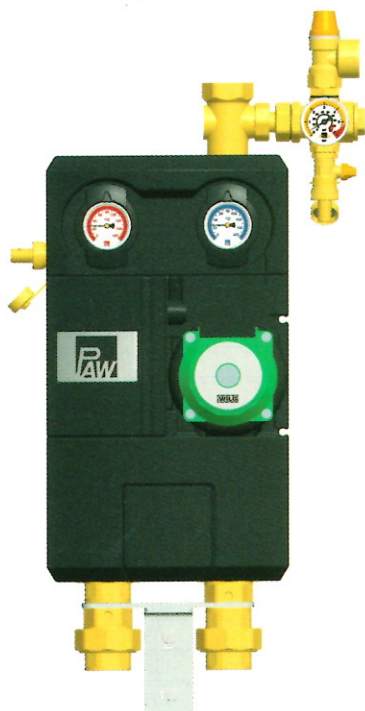




## SolarBloC mega up to 150 m<sup>2</sup> of collector surface



All connections 1¼" internal thread

All fluid-carrying parts are made of brass

Large ball valve handles, easy handling, visible closing position

Pump can be isolated so that it can be replaced without draining

Fully assembled with flat gaskets

Check valves in the flow and return line, mounted in the cases of the mounting plate, can be opened, 2 x 200 mm wc, especially for solar systems, prevents gravity circulation

with premounted steel wall bracket

Design insulation with optimized function made of durable elastic EPP; 100 % insulation of fittings, ventilation opening to cool the pumps

Solar safety group, solar pressure relief valve 6 bars, pressure gauge resistant to high temperatures 0-6 bars with valve, flat sealing connection 1" for an expansion tank

All-metal thermometers, can be pulled off, with immersion sleeve integrated in the ball valve

with premounted solar circulation pump by Grundfos or Wilo, without cable

Fill and drain unit integrated, two fill and drain valves (at the flow ball valve and at the safety group) permit to fill and flush the entire installation.

### TECHNICAL DATA SOLARBLOC MEGA - DN 32

#### Materials

Valves and fittings	Brass
Gaskets	Klingsil / EPDM
Insulation	EPP shells
Check valves	Brass

#### Technical data

Max. pressure	6 bar
Max. operating temperature	120 °C

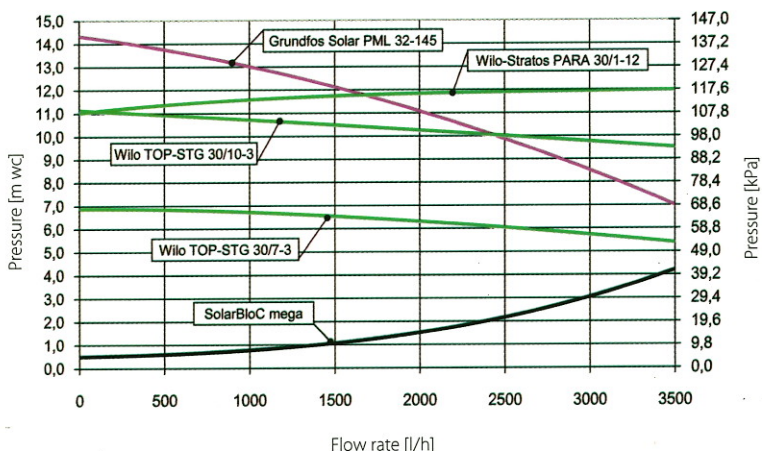
#### Equipment

Check valves	2 x 200 mm wc
Pressure relief valve	6 bar, for solar thermal installations
Pressure gauge	0-6 bar, temperature-resistant
Thermometer	0-160 °C, full metal

#### Dimensions

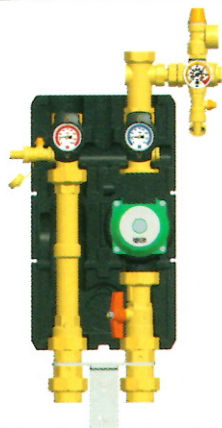
Connections	1¼" int. thread
Centre distance	125 mm
Installation length	603 mm
Width	331 mm
Height	675 mm

Differential pressure diagram SolarBloC mega



SolarBloC  
mega

#### Illustration



#### SolarBloC mega - DN 32

Wilo-Stratos PARA 30/1-12, high-efficiency pump, 0-10 V signal
Wilo TOP-STG 30/7-3, 3-speed
Wilo TOP-STG 30/10-3, 3-speed
Grundfos Solar PML 32-145, high-efficiency pump

#### Item no.

#### €/ piece

60791.WS12	1074.20
60791.WI7	665.80
60791.WI10	700.20
60791.GH14	699.20