

Ecophon Solo™ Heptagon

Ecophon Solo Heptagon is an acoustic solution, primarily when it is not possible to install a wall-to-wall ceiling. Solo Heptagon is suitable in buildings where the room volume could be maintained or as an option when TABS (Thermally Activated Building System) is selected as cooling system.

Solo Heptagon is an unframed free hanging unit offering a high degree of design possibilities both regarding colours and suspension systems. The two different suspension systems using Adjustable wire hangers or Adjust brackets in combination with the engineered Connect Absorber anchor (patent) give opportunities to create several layers and angles.

The Solo Heptagon panel is available in size 1168x1198x40 mm with a weight of 4,2 kg. The panel is manufactured from high density, 3rd generation glass wool, with Akutex™ FT surface on both sides. The edges are straight cut and painted.

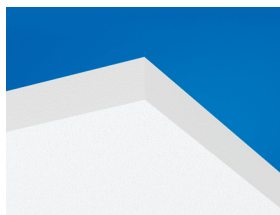


Woon, Netherlands

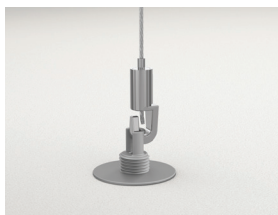
SYSTEM RANGE



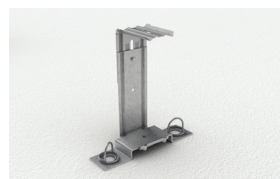
| | |
|----------------|-----------|
| Size, mm | 1168x1198 |
| Special Fixing | • |
| Thickness | 40 |
| Inst. Diag. | M367 |



Solo panel



Suspension with Connect Adjustable wire hanger and Connect Absorber



Suspension with Connect Adjustable bracket



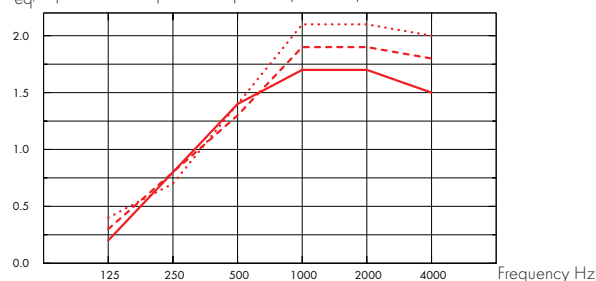
Acoustic

The values in the diagram refer to a single unit. If the units are arranged in a cluster with distances between units less than 0,5 meters, the Aeq per unit will be slightly reduced.

Sound Absorption:

based on test results according to EN ISO 354.

A_{eq}, Equivalent absorption area per unit (m² sabin)



- Solo Heptagon 1168x1198, 200 mm o.d.s.
 - - - Solo Heptagon 1168x1198, 400 mm o.d.s.
 - ... Solo Heptagon 1168x1198, 1000 mm o.d.s.
- o.d.s = overall depth of system

| THK mm | o.d.s. mm | A _{eq} , Equivalent absorption area per unit (m ² sabin) | | | | | |
|-----------|--------------|--|--------|--------|---------|---------|---------|
| | | 125 Hz | 250 Hz | 500 Hz | 1000 Hz | 2000 Hz | 4000 Hz |
| 40 | 200 | 0.20 | 0.80 | 1.40 | 1.70 | 1.70 | 1.50 |
| 40 | 400 | 0.30 | 0.80 | 1.30 | 1.90 | 1.90 | 1.80 |
| 40 | 1000 | 0.40 | 0.70 | 1.40 | 2.10 | 2.10 | 2.00 |



Accessibility

The tiles are demountable.



Cleanability

Daily dusting and vacuum cleaning. Weekly wet wiping.



Visual appearance

White Frost, nearest NCS colour sample S 0500-N, 85% light reflectance (of which more than 99% is diffuse reflection). Retro reflection coefficient 63 mcd/(m²lx). Gloss < 1.



Influence of climate

The units should be installed in areas/premises where the ambient relative humidity (RH) and the temperature does not exceed 70% and 30°C respectively.



Indoor Climate

Certificate / Label

Europe

EN
13501-1



Environmental influence

Certificate / Label

Europe

EN
13501-1



Fully recyclable.



Fire safety

Country

Europe

Standard

EN 13501-1

Class

A2-s1,d0

The glass wool core of the tiles is tested and classified as non-combustible according to EN ISO 1182.



Mechanical properties

The tile can take both point loads and distributed loads. See Functional demands, Mechanical properties at www.ecophon.com.



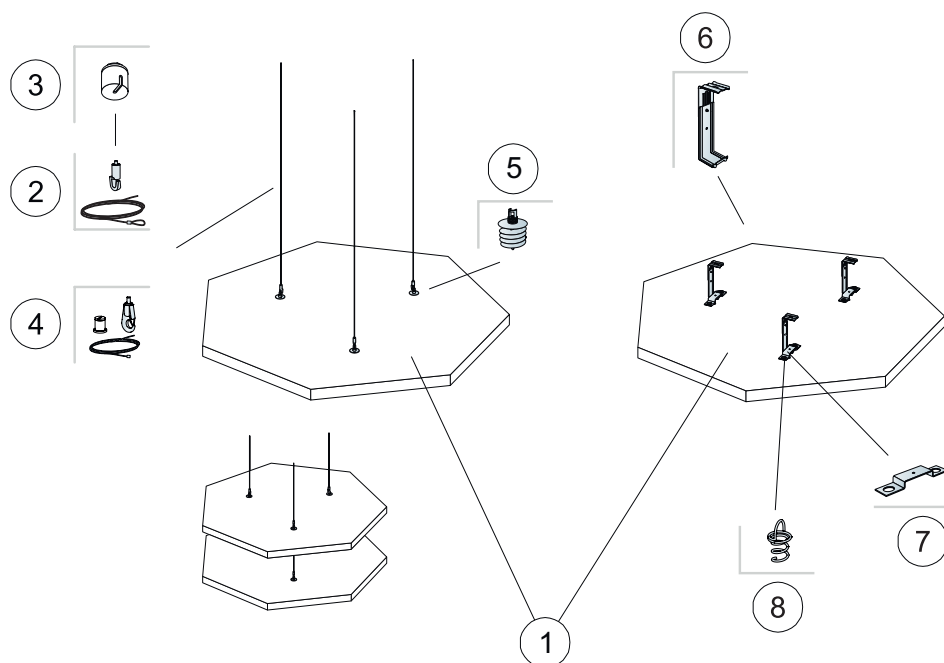
Installation

Installed according to installation diagrams, installation guides and drawing aid. For information regarding minimum overall depth of system see quantity specification.



CE

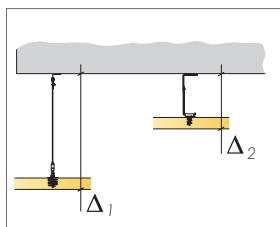
The CE marking confirms important product performance such as sound absorption, emissions, fire safety and load bearing capacity. All Ecophon ceiling products are CE marked according to European standard EN13964, and individual product performance is declared in Declaration of Performance (DoP) documents.



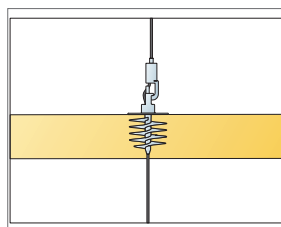
QUANTITY SPECIFICATION (EXCL. WASTAGE)

| | | Size, mm |
|---|---|---------------------------|
| | | 1168x1198 |
| 1 | Solo Heptagon | 1,03m ² /panel |
| 2 | Connect Adjustable wire hanger (Alt 1) | 3/panel |
| 3 | Connect Covering cup (Alt 1, Optional) | 3/panel |
| 4 | Connect Adjustable wire Kit (Alt 1, Optional) | 3/panel |
| 5 | Connect Absorber anchor (Alt 1) | 3/panel |
| 6 | Connect Adjust bracket (Alt 2) | 3/panel |
| 7 | Connect Panel fixing plate (Alt 2) | 3/panel |
| 8 | Connect Spiral anchor (Alt 2) | 6pcs/panel |

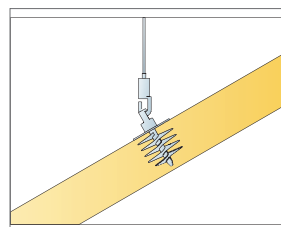
Δ Min. overall depth of system: Δ1 140 mm / Δ2 121 mm



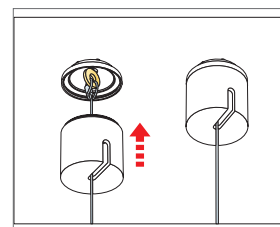
See Quantity specification



Panels can be suspended underneath each other



Panels can be installed in angles up to 60°



Installation of Connect Covering cup