



**ECONOPLATE BV SERIES
HOT WATER SERVICE
PACKAGED HEAT EXCHANGERS
WITH THERMAL STORES**

**TECHNICAL AND
INSTALLATION
DOCUMENTATION**

**STOKVIS ENERGY SYSTEMS
UNIT 34 CENTRAL PARK ESTATE
34 CENTRAL PARK ESTATE
WEST MOLESEY
SURREY. KT8 2QZ
TEL: 0208 783 3050
FAX: 0208 783 3051
E-MAIL: info@stokvisboilers.com
WEBSITE: www.stokvisboilers.com**

ECONOPLATE BV28072016 DOC188 V7

STOKVIS ECONOPLATE BV SERIES

GENERAL DESCRIPTION

The Stokvis Econoplate BV series of Brazed Heat Exchanger, Packaged, Hot Water, Thermal Stores are available in a range of outputs from 56kW to 231kW, (based on a primary temperature of 80°C), and 33kW to 152kW (based on primary temperatures of 70°C) coupled to thermal storage vessels with nominal capacities of 300 to 1000 litres. The vessels are manufactured from 316 grade stainless steel, fully insulated with rigid polyurethane foam, all enclosed in a durable P.V.C. zip on cover.

The Plate Heat Exchangers have very high outputs, low water content and low thermal inertia making them ideal for use in systems requiring high outputs, fast recovery with varying heat loads. The thermal store allows for those high peaks which occur at various times, without the need for increased boiler capacity.

The Thermal Store and Heat exchanger kits are all suitable for unvented systems however a suitable set of unvented kit equipment is required to do so. This is available as an option.

All units are designed to operate up to a maximum primary operating temperature of 90°C and up to a maximum primary pressure of 8 barG.

For larger applications a number of units may be installed in parallel.

All of the Econoplate BV units consist of a brazed plate heat exchanger “kit” which is site assembled by others onto a stainless steel thermal storage vessel. To complement this there are 3 different controls packages available.

Model M - Mechanical, thermostatic, 2 port, control valve with inbuilt secondary sensor, secondary pump and secondary flow setting valve.

Model E - Electrically operated, 2 port control valve (24Volt, 0-10V signal), ½” BSPF connection for sensor (sensor not included), secondary pump and secondary flow setting valve. No controls are included with this package.

Model EE - Electrically operated, 2 port control valve (230V), Econotrol™ temperature controller, secondary temperature sensor, primary pump, secondary pump and secondary flow setting valve.

There are full descriptions of each of these later in the manual.

The Thermal Stores are designed to accept a back up immersion heater if required, an adaptor flange for the Lateral Hole is available to do so which will accept a 2½” threaded immersion heater, kW ratings and further details available on request.

TECHNICAL SPECIFICATION

-Thermal Storage Vessel	: AISI 316 grade stainless steel
-Storage Vessel Insulation	: Rigid Polyurethane foam C.F.C. free
-Storage Vessel Jacket	: Durable P.V.C.
-Heat Exchanger.	: Copper brazed/Stainless steel
-Heat Exchanger Insulation Cover	: Expanded polyurethane/Polystyrene 475K
-Secondary Pipework	: LG2/brass/copper
-Maximum Pressure	: Primary & Secondary 8 bar
-Maximum Primary Temperature	: 90°C

Dependent upon model the following apply:

-Primary pumps (Model EE only- see table below)	: UPS2 25-80 or UPS2 32-80, 230V
-Secondary pumps	: UP 20-45N or UPS 25-55N or UPS 32-55N, 230V
-2 port control valve (Model M)	: 1” or 1½” BSP(F)
-2 port control valve (Model E & EE)	: 1” or 1 ¼” BSP(F)
-Secondary flow setting valve	: ¾”, 1” or 1 ¼” BSP(F)
-Heat exchanger HWS circuit Safety Valve	: ¾” 8bar

Thermal Storage Vessel Dimensions (Excluding heat exchanger kit)

-300 litre vessel : 287 l volume, 1685 mm high, 620 mm diameter.

-500 litre vessel : 480 l volume, 1690 mm high, 770 mm diameter.

-800 litre vessel : 792 l volume, 1840 mm high, 950 mm diameter.

-1000litre vessel: 990 l volume, 2250 mm high, 950 mm diameter.

Add 230mm for the heat exchanger kit for Models M & E and 280mm for Model EE.

A clearance of at least 250mm should be allowed around the assembled unit for access and maintenance. If an immersion heater is to be fitted then the clearance in front of the Thermal Store Control Panel and Lateral Hole should be increased to match the diameter of the vessel.

Thermal Storage Vessel Connections

-Cold water feed: 300/500/800/1000litre : 2"BSP(M)

-Hot water service flow: 300/500/800/1000litre : 2"BSP(M)

-Hot water service return: 300/500/800/1000litre : 1 1/2"BSP(M)

-Vessel drain connection 300/500litre : 1" BSP(M)

-Vessel drain connection 800/1000litre : 1 1/4" BSP(M)

-For all other vessel connections please refer to the drawing included later in this document

N.B. Models M & E are not supplied with a primary pump, correct selection of this pump is important to ensure the duty is achieved. In addition, if a fixed flow pump is used (as opposed to a variable speed) an additional bypass or differential control valve will be required. See below for primary flow rate and pressure drop figures.

ECONOPLATE BV MODEL M	VALVE SIZE(INLET)	PRIMARY FLOW RATE l/s	PRIMARY OUTLET	PRIMARY PRESSURE DROP (kPa)
BV10/10	25mm	0.56	25mm	77
BV10/20	25mm	1.02	25mm	81
BV10/30	25mm	1.22	25mm	79
BV10/40	40mm	1.40	25mm	59
BV10/50	40mm	1.49	25mm	57

ECONOPLATE BV MODEL E	VALVE SIZE (INLET)	PRIMARY FLOW RATE l/s	PRIMARY OUTLET	PRIMARY PRESSURE DROP (kPa)
BV10/10	25mm	0.56	25mm	72
BV10/20	25mm	1.02	25mm	63
BV10/30	25mm	1.22	25mm	53
BV10/40	32mm	1.40	25mm	40
BV10/50	32mm	1.49	25mm	37

ECONOPLATE BV MODEL EE	VALVE SIZE(OUTLET)	PRIMARY FLOW RATE l/s	PRIMARY PUMP MODEL (INLET)	PRIMARY PRESSURE DROP (kPa)
BV10/10	25mm	0.56	UPS2 25-80	72
BV10/20	25mm	1.02	UPS2 25-80	63
BV10/30	25mm	1.22	UPS2 25-80	53
BV10/40	32mm	1.40	UPS2 32-80	40
BV10/50	32mm	1.49	UPS2 32-80	37

CONTROLS PACKAGES

All standard thermal stores as listed earlier come with a control panel incorporating an ON/OFF switch and green “Power” lamp, enable thermostat and manual reset high limit thermostat, amber “Ready” lamp and temperature gauge.

Model M : Mechanical, thermostatic, 2 port, control valve with in-built secondary sensor, secondary pump, secondary flow setting valve, and all secondary pipework required to install the kit on to the thermal store. The secondary circuit pipework includes isolating valves and unions for easy connection to the thermal store. The primary pump/primary flow is to be supplied by the customer from the heat source circuit.

Model E : Electrically operated, 2 port control valve (24volt, 0-10v signal), ½” BSPF connection for sensor (sensor not included), secondary pump, secondary flow setting valve, and all secondary pipework required to install the kit on to the thermal store. The secondary circuit pipework includes isolating valves and unions for easy connection to the thermal store. The primary pump and control system is not included. External temperature controls are required to operate the control valve to regulate the temperatures from the heat exchanger.

Model EE : Electrically operated, 2 port control valve (230V), Econotrol™ controller, secondary temperature sensor, primary pump, secondary pump, interconnecting wiring, secondary flow setting valve, all secondary pipework required to install the kit on to the thermal store. The secondary circuit pipework includes isolating valves and unions for easy connection to the store.

The primary inlet is to be connected to the primary pump and the return to the 2 port valve, both using the unions provided. The primary pump included has a “spare head allowance” of at least 6 kPa for external pipework losses.

The Econotrol™ is an Electronic PID temperature controller with the following features.

: 7 day time clock control of 2 temperature settings and/or 1 temperature /night off, per day.

: Safety extra low voltage circuit for external “clock” control.

: Safety extra low voltage circuit for Thermal Store Enable Thermostat.

: Adjustable high limit and low limit temperature alarms, temp. alarm lamp, common volt free temp. alarm and selectable high temp. lockout modes. (*low temperature alarm disabled in this application*)

: Functional indication of: pump enabled, valve opening or closing.

: LCD Digital display of day and time, and secondary flow temperature and any faults

: Full menu driven interrogation of parameters and operating modes.

: 500mA control fuse, 10A output fuse

Full Model designations are made up in the following way:

BV10/ = Heat exchanger type: Brazed, type 10.

.../?? = Size of heat exchanger (number of plates).

.../../???? = Nominal capacity of thermal storage vessel in litres.

.../../..../? = Model type: Mechanical (**M**), Electrical (**E**), Electrical c/w Econotrol™(**EE**)

e.g. A 30 plate brazed heat exchanger with mechanical, thermostatic control valve on a 500 litre nominal capacity vessel would be designated **BV10/30/500/M**

e.g. A 50 plate brazed heat exchanger with electrical control valve c/w Econotrol™ on a 1000 litre nominal capacity vessel would be designated **B10/50/1000/EE**

PERFORMANCE GUIDE FOR ECONOPLATE BV RANGE (PRIMARY TEMPERATURE 80°C , COLD FEED 10°C)

ECONOPLATE BV MODEL

	BV10/10/300	BV10/20/300	BV10/30/300	BV10/40/300	BV10/50/300
CONTINUOUS OUTPUT AT 60°C litre/min	17.4	35.4	47.4	59.4	66
PEAK OUTPUT litre/10min	432	612	732	852	918
PEAK OUTPUT litre/60min	1302	2382	3102	3822	4218
PRIMARY FLOW RATE litre/sec	0.56	1.02	1.22	1.40	1.49
HEAT LOAD REQUIRED kW	56	123	166	205	231
APPROX VESSEL RECOVERY TIME (Assuming no hot water draw off)	17 Mins	8 Mins	6 Mins	5 Mins	5 Mins

	BV10/10/500	BV10/20/500	BV10/30/500	BV10/40/500	BV10/50/500
CONTINUOUS OUTPUT AT 60°C litre/min	17.4	35.4	47.4	59.4	66
PEAK OUTPUT litre/10min	606	786	906	1026	1092
PEAK OUTPUT litre/60min	1476	2556	3276	3996	4392
PRIMARY FLOW RATE litre/sec	0.56	1.02	1.22	1.40	1.49
HEAT LOAD REQUIRED kW	56	123	166	205	231
APPROX VESSEL RECOVERY TIME (Assuming no hot water draw off)	28 Mins	14 Mins	10 Mins	8 Mins	8 Mins

	BV10/10/800	BV10/20/800	BV10/30/800	BV10/40/800	BV10/50/800
CONTINUOUS OUTPUT AT 60°C litre/min	17.4	35.4	47.4	59.4	66
PEAK OUTPUT litre/10min	887	1067	1187	1307	1373
PEAK OUTPUT litre/60min	1757	2837	3557	4277	4673
PRIMARY FLOW RATE litre/sec	0.56	1.02	1.22	1.40	1.49
HEAT LOAD REQUIRED kW	56	123	166	205	231
APPROX VESSEL RECOVERY TIME (Assuming no hot water draw off)	46 Mins	22 Mins	17 Mins	13 Mins	12 Mins

	BV10/10/1000	BV10/20/1000	BV10/30/1000	BV10/40/1000	BV10/50/1000
CONTINUOUS OUTPUT AT 60°C litre/min	17.4	35.4	47.4	59.4	66
PEAK OUTPUT litre/10min	1065	1245	1365	1485	1551
PEAK OUTPUT litre/60min	1935	3015	3735	4455	4851
PRIMARY FLOW RATE litre/sec	0.56	1.02	1.22	1.40	1.49
HEAT LOAD REQUIRED kW	56	123	166	205	231
APPROX VESSEL RECOVERY TIME (Assuming no hot water draw off)	57 mins	28 Mins	21 Mins	17 Mins	15 Mins

PERFORMANCE GUIDE FOR ECONOPLATE BV RANGE (PRIMARY TEMPERATURE 70°C , COLD FEED 10°C)

ECONOPLATE BV MODEL

	BV10/10/300	BV10/20/300	BV10/30/300	BV10/40/300	BV10/50/300
CONTINUOUS OUTPUT AT 60°C litre/min	9.6	22.2	30.6	38.4	43.8
PEAK OUTPUT litre/10min	354	480	564	642	696
PEAK OUTPUT litre/60min	834	1590	2094	2562	2886
PRIMARY FLOW RATE litre/sec	0.56	1.02	1.22	1.40	1.49
HEAT LOAD REQUIRED kW	33	77	107	133	152
APPROX VESSEL RECOVERY TIME (Assuming no hot water draw off)	30 Mins	13 Mins	9 Mins	7 Mins	7 Mins

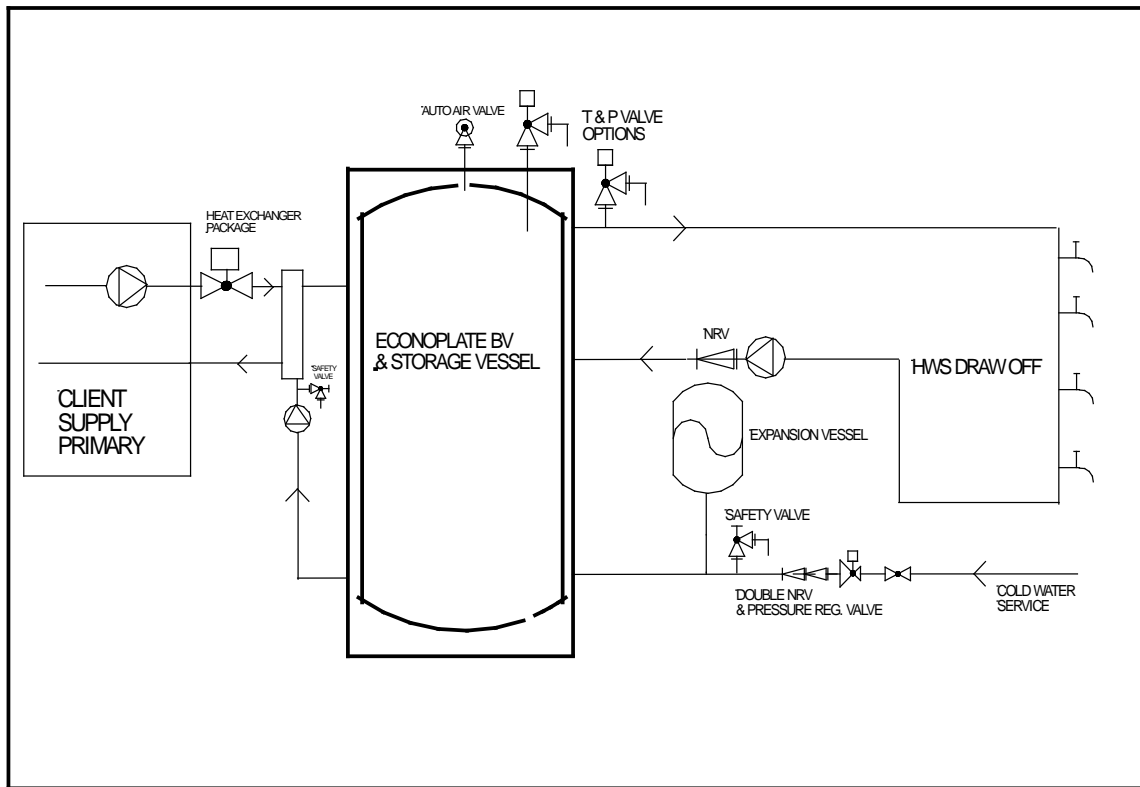
	BV10/10/500	BV10/20/500	BV10/30/500	BV10/40/500	BV10/50/500
CONTINUOUS OUTPUT AT 60°C litre/min	9.6	22.2	30.6	38.4	43.8
PEAK OUTPUT litre/10min	528	654	738	816	870
PEAK OUTPUT litre/60min	1008	1764	2268	2736	3060
PRIMARY FLOW RATE litre/sec	0.56	1.02	1.22	1.40	1.49
HEAT LOAD REQUIRED kW	33	77	107	133	152
APPROX VESSEL RECOVERY TIME (Assuming no hot water draw off)	50 Mins	22 Mins	16 Mins	13 Mins	11 Mins

	BV10/10/800	BV10/20/800	BV10/30/800	BV10/40/800	BV10/50/800
CONTINUOUS OUTPUT AT 60°C litre/min	9.6	22.2	30.6	38.4	43.8
PEAK OUTPUT litre/10min	809	935	1019	1097	1151
PEAK OUTPUT litre/60min	1289	2045	2549	3017	3341
PRIMARY FLOW RATE litre/sec	0.56	1.02	1.22	1.40	1.49
HEAT LOAD REQUIRED kW	33	77	107	133	152
APPROX VESSEL RECOVERY TIME (Assuming no hot water draw off)	83 Mins	36 Mins	26 Mins	21 Mins	18 Mins

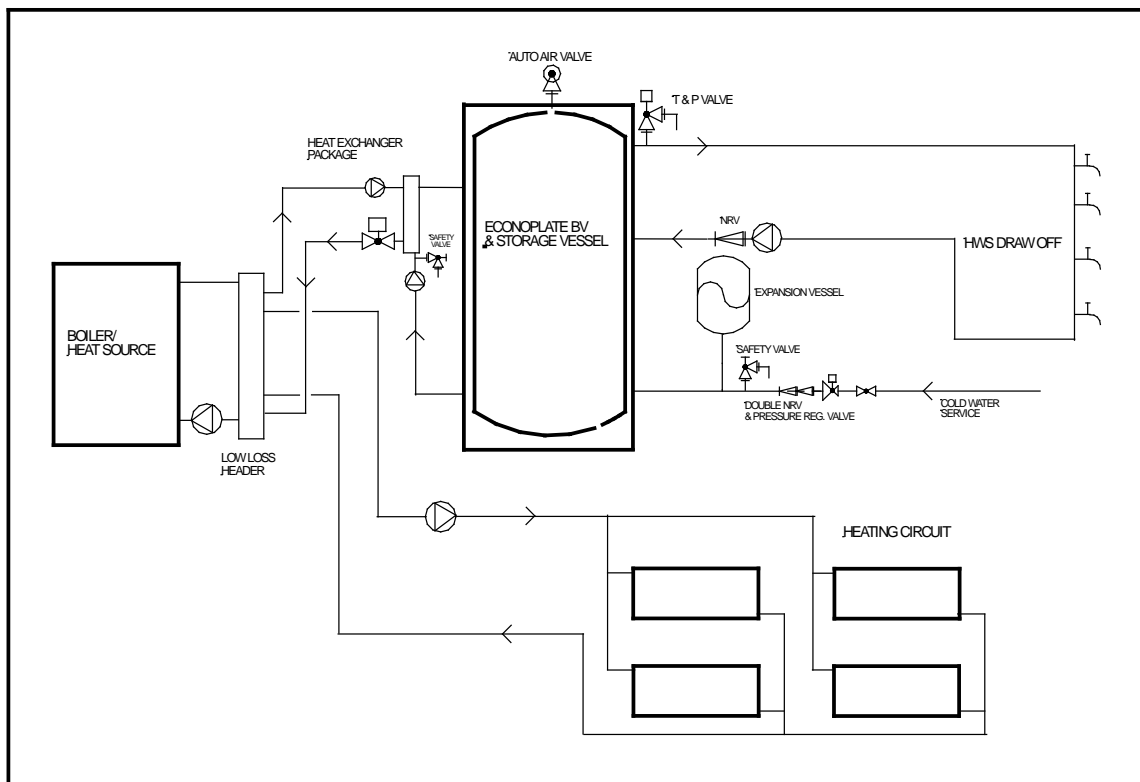
	BV10/10/1000	BV10/20/1000	BV10/30/1000	BV10/40/1000	BV10/50/1000
CONTINUOUS OUTPUT AT 60°C litre/min	9.6	22.2	30.6	38.4	43.8
PEAK OUTPUT litre/10min	987	1113	1197	1275	1329
PEAK OUTPUT litre/60min	1467	2223	2727	3195	3519
PRIMARY FLOW RATE litre/sec	0.56	1.02	1.22	1.40	1.49
HEAT LOAD REQUIRED kW	33	77	107	133	152
APPROX VESSEL RECOVERY TIME (Assuming no hot water draw off)	103 mins	45 Mins	32 Mins	26 Mins	23 Mins

INSTALLATION SCHEMATICS

Typical Schematic of an Econoplate BV, Models M or E with Unvented Cold Feed.



Typical Schematic of Econoplate BV Model EE on a Combined Heating & Hot Water System with Unvented Cold Feed.

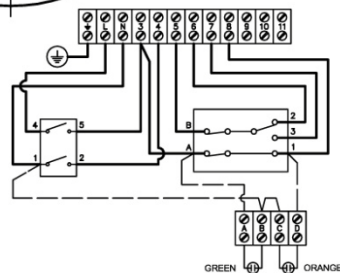
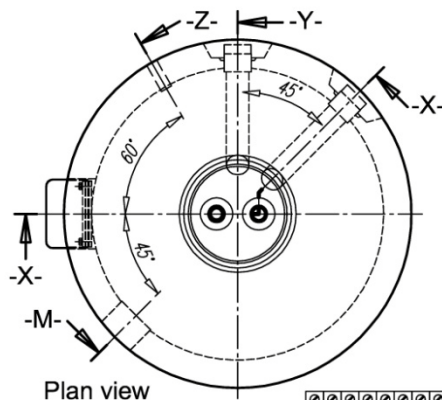
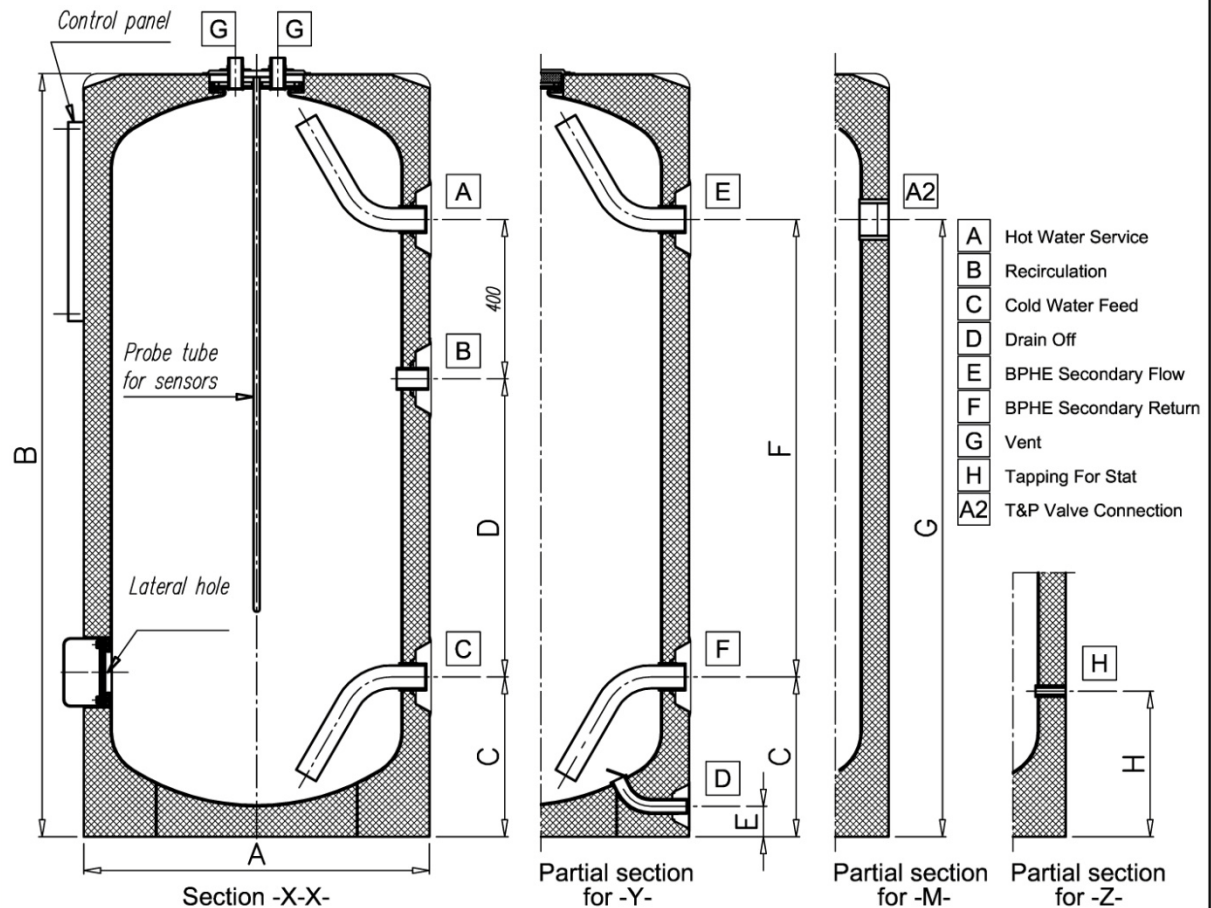


THERMAL STORE/VESSEL FULL DIMENSIONAL DATA

STOKVLS
ENERGY SYSTEMS

Single-walled tanks (only storage)
Mod.: GX-200/300/500/800/1000-R/PSS

Ref.: FP10_174 - 02
27/04/2015



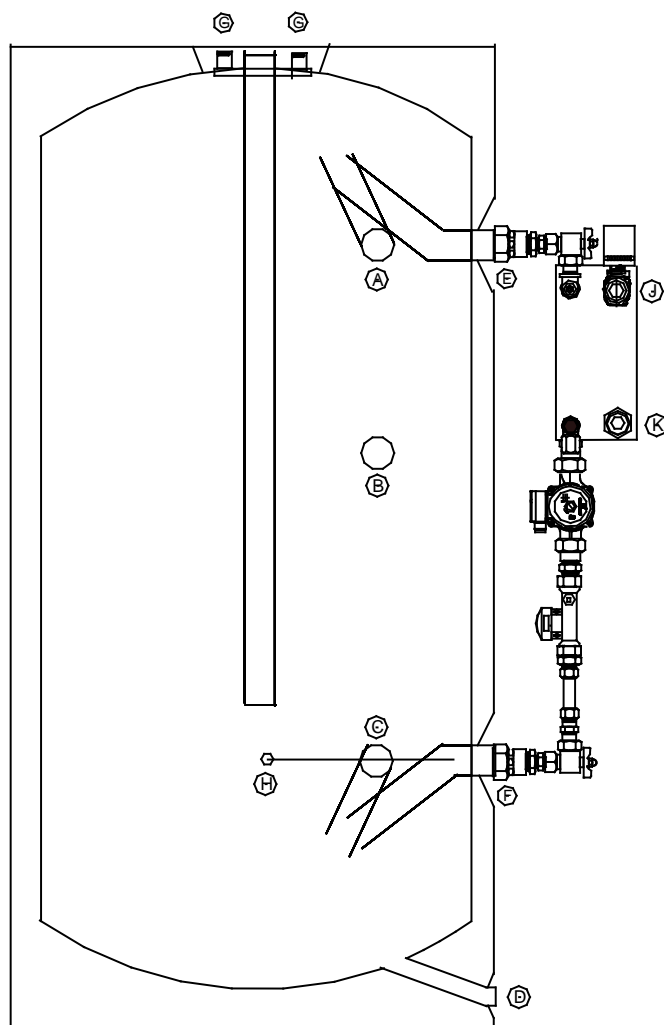
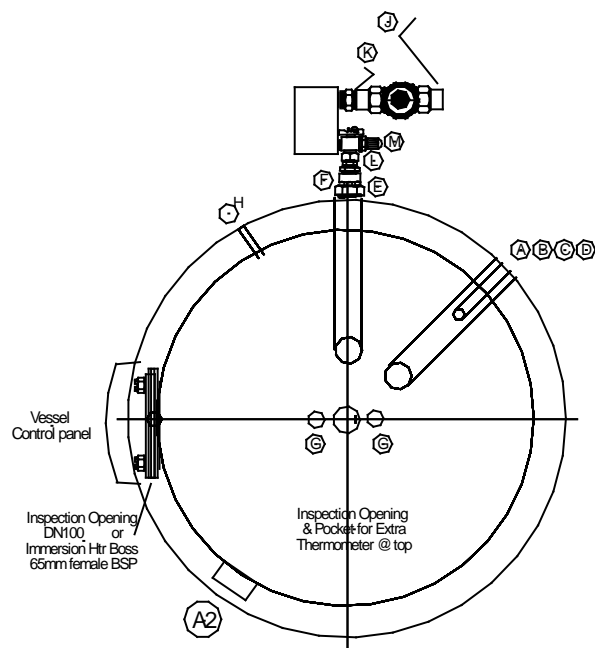
* Material: AISI 316
chemically descaled and passivated
* Max. working pressure: 8 bar
* Max. temperature pressure: 90° C
* Thermally insulated:
Polyurethane with C.F.C.-free

* Equipments:
- External lining
- Top cover
- Lateral hole with cover
- Control panel with
thermometer and regulating
and safety thermostat

MODEL	male A	male B	male C	male D	male E	male F	male G	female H	female A2	Capacity (liters)	Weight (Kg.)
200	2"	1-1/2"	2"	1"	2"	2"	1"	1/2"	2-1/2"	195	51
300	2"	1-1/2"	2"	1"	2"	2"	1"	1/2"	2-1/2"	287	60
500	2"	1-1/2"	2"	1"	2"	2"	1"	1/2"	2-1/2"	480	91
800	2"	1-1/2"	2"	1-1/4"	2"	2"	1"	1/2"	2-1/2"	792	134
1000	2"	1-1/2"	2"	1-1/4"	2"	2"	1"	1/2"	2-1/2"	990	157

MODEL	A	B	C	D	E	F	G	H
200		1205		220		620	928	
300	Ø 620	1685	308	707	70 ±5	1107	1415	298
500	Ø 770	1690	355	616		1016	1371	345
800		1840		740		1140	1472	
1000	Ø 950	2250	332	1150	100	1550	1882	322

CONNECTION DETAILS MODELS M & E



MODEL M & E

CONNECTION SCHEDULE

A2 = 65mm female T & P VALVE

A = 50mm male HWS

B = 40mm male RECIRC

C = 50mm male CWF

D = 25mm male DRAIN OFF (300-500)
32mm male DRAIN OFF (800-1000)

E = 50mm male BPHESEC FLOW

F = 50mm male BPHESEC RETURN

G = 25mm male VENT

H = 15mm male TAPPING

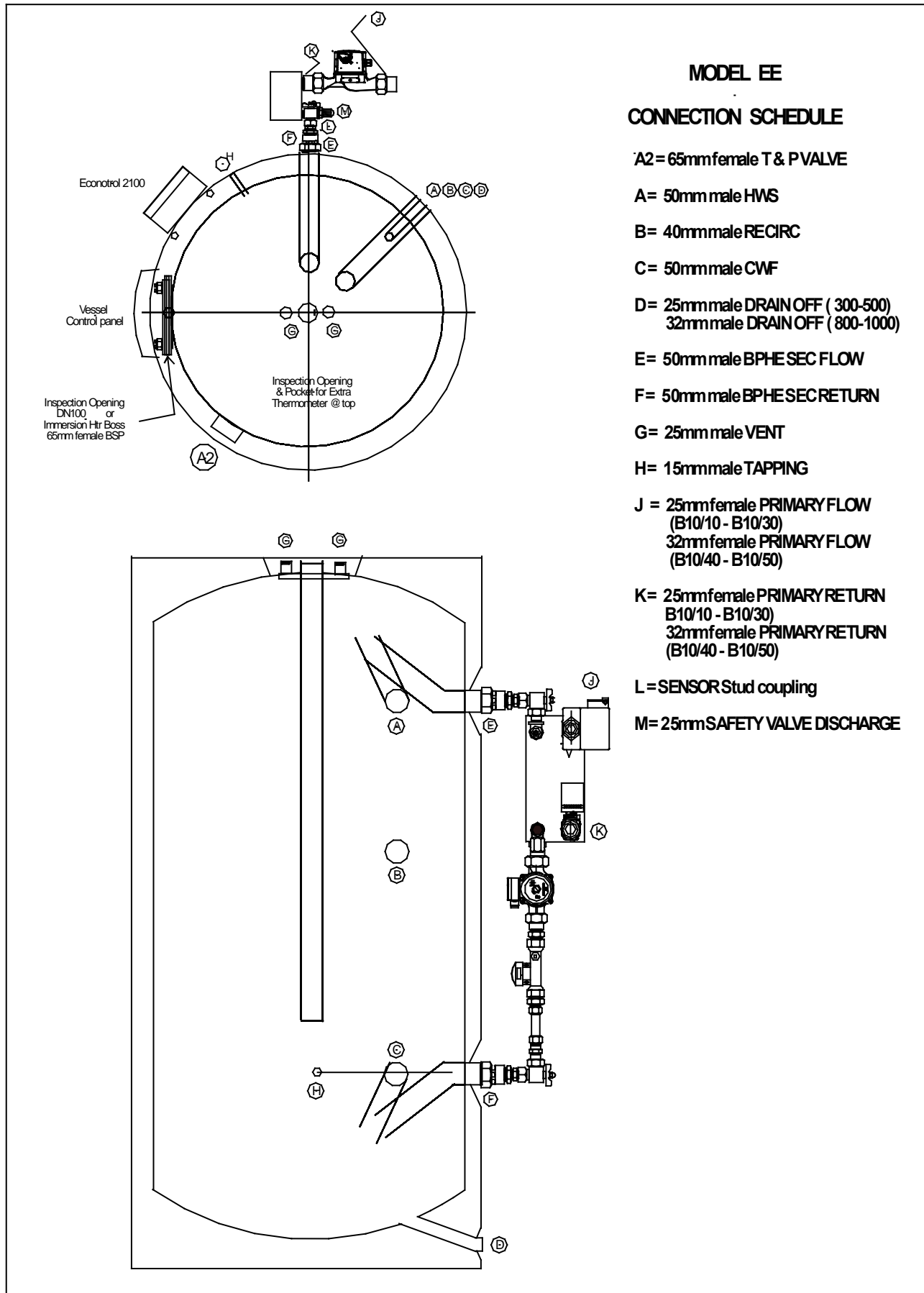
J = 25mm female PRIMARY FLOW (B10/10 - B10/30)
32mm female PRIMARY FLOW (B10/40 - B10/50 MODEL E)
40mm female PRIMARY FLOW (B10/40 - B10/50 MODEL M)

K = 25mm female PRIMARY RETURN

L = 15mm female CLIENT SENSOR or Model M POCKET

M = 25mm SAFETY VALVE DISCHARGE

CONNECTION DETAILS MODEL EE



OPERATION

The control panel fitted to the thermal store incorporates an enable thermostat and a manual reset high limit thermostat. The enable thermostat is used to bring the Econoplate package online, either by starting the secondary transfer pump or enabling the Econotrol™ which in turn starts the pumps.

The secondary circuit of the heat exchanger incorporates a transfer pump and flow commissioning valve which ensures water circulates at the pre-set flow rate from the bottom of the thermal store, through the heat exchanger where it is heated and returns it to the store ready for use by the hot water draw offs.

The applicable temperature control system (provided by others on Model E) then senses the secondary water flow temperature from the heat exchanger and modulates the control valve fitted to the primary circuit to maintain a constant secondary outlet temperature to the thermal store.

ELECTRICAL SUPPLY & LOAD

The electrical supply is made in to the Control Panel on the Thermal Store. The panel must be removed to access the terminal strip.

A single phase supply is required in all cases, wired to terminals L, N & E, through a local isolator, all in accordance with current IEE regulations.

Electrical loads vary for different models, this is as a result of the number and type of pumps fitted.

The EE Models also have a motorised valve and controller which have a small power consumption. Therefore add a further 0.2A for Model EE.

- | | |
|--------------------------------|---|
| -Primary pumps (Model EE only) | : UPS2 25-80, 230V, 1.1A 140 Watt max or
: UPS2 32-80, 230V, 1.1A 140 Watt max |
| -Secondary pumps | : UP 20-45N, 230V, 0.52A, 120 Watt or
: UPS 25-55N, 230V, 0.38A, 85 Watt or
: UPS 32-55N, 230V, 0.46A, 105 Watt |

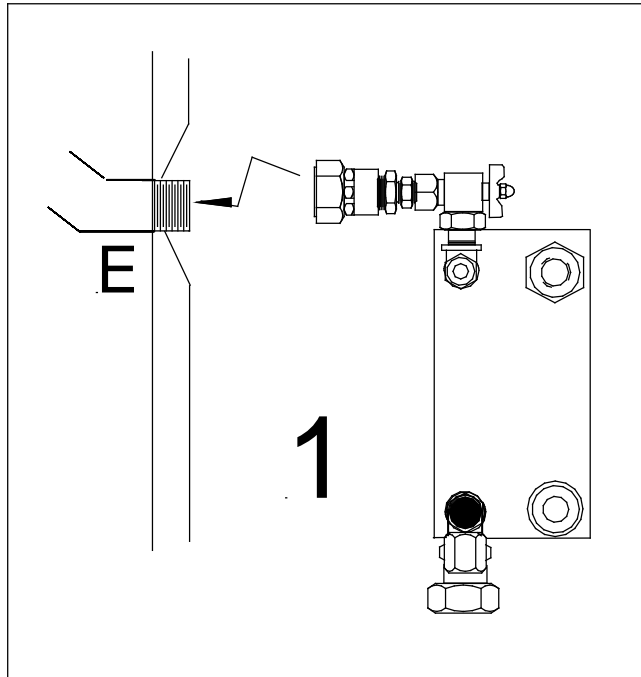
INSTALLATION & ASSEMBLY DETAILS

The heat exchanger package is supplied in kit form comprising of various sub-assemblies and components which are ready for connection to the thermal store. The whole package has been previously pre-assembled, hydraulically tested and then disassembled, at the various union connections, prior to delivery.

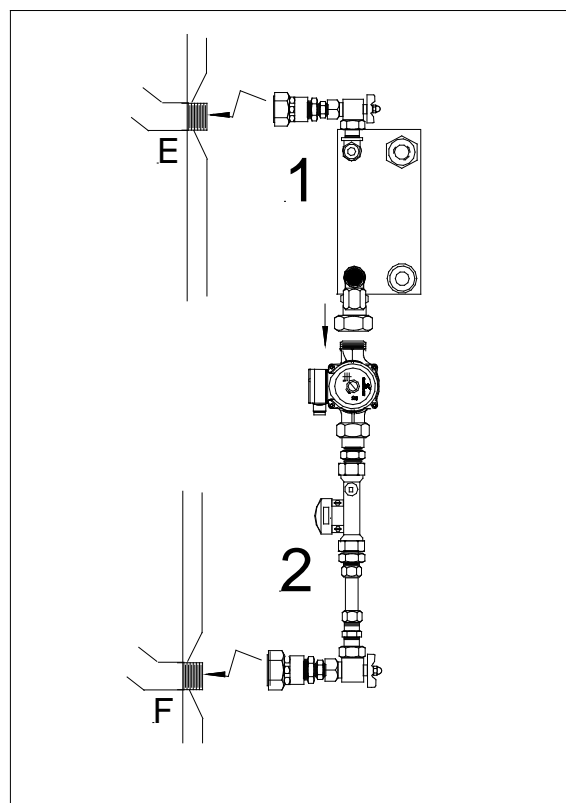
Refer also to the Thermal Store / Vessel drawing for details of the connections.

All Models

Component 1 : The heat exchanger sub-assembly, which incorporates the heat exchanger secondary flow and heat exchanger safety valve, is fitted to connection **E** on the thermal store using the union connection provided. The safety valve outlet should be piped to drain via a tundish.

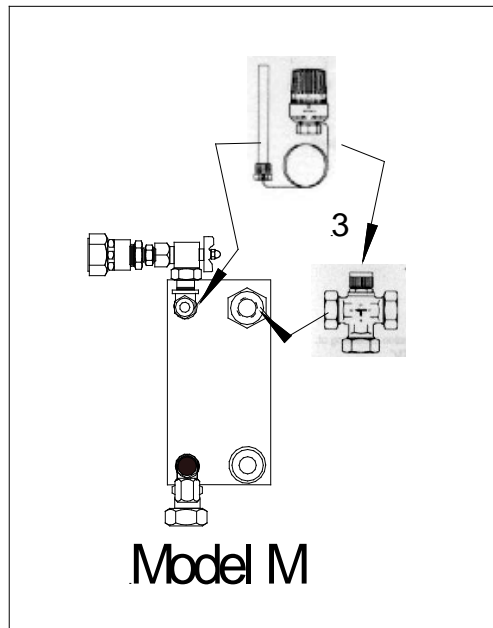


Component 2 : The secondary return sub-assembly, including transfer pump is fitted to connection **F** on the thermal store using the union connection provided and is then connected to the bottom union connection of the heat exchanger assembly. When connected check all pipe and fittings for tightness. The secondary section of the assembly is now complete.



Model M

Component 3 : The mechanical 2 port valve is fitted to the primary flow port (inlet) on the heat exchanger assembly with the union provided. Ensure the valve orientation is correct flow I → II into the heat exchanger. The sensor is fitted into the pocket provided on the heat exchanger secondary flow port.

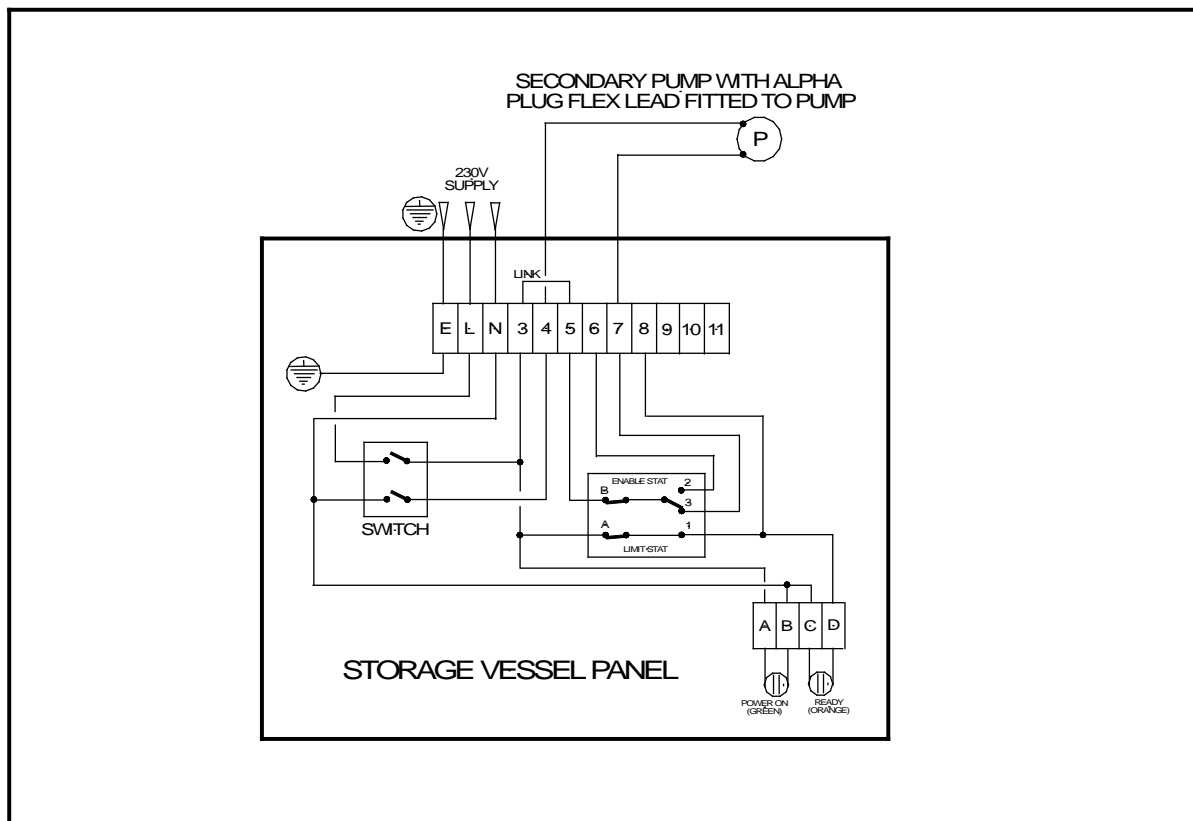


Model M -The incoming supply wiring, should now be made to terminals L, N & E, in the control panel on the thermal store. The control panel requires drilling to suit, in a location as indicated below. In addition the panel should be drilled at this time to suit the PG11/M20 gland provided for the transfer pump cable. The flying lead from the pump should be wired to terminals 7 for the Live and 4 for Neutral. A link must also be added from terminal 3 to terminal 5. All cabling can then be “zip” tied together.



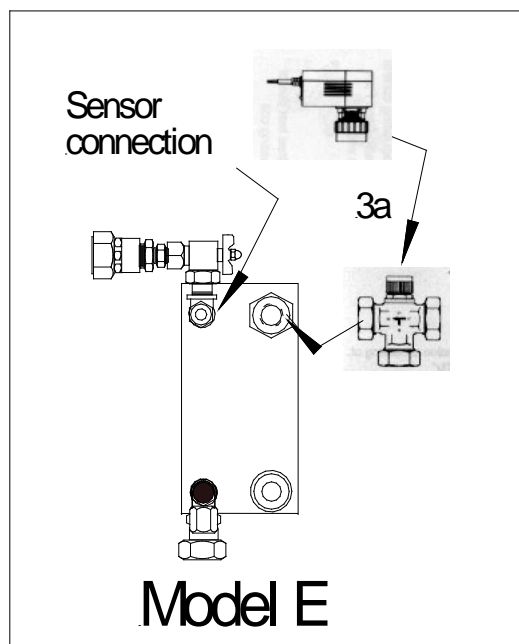
The Econoplate BV is now complete and ready for installation of other services.

Model M Wiring Details

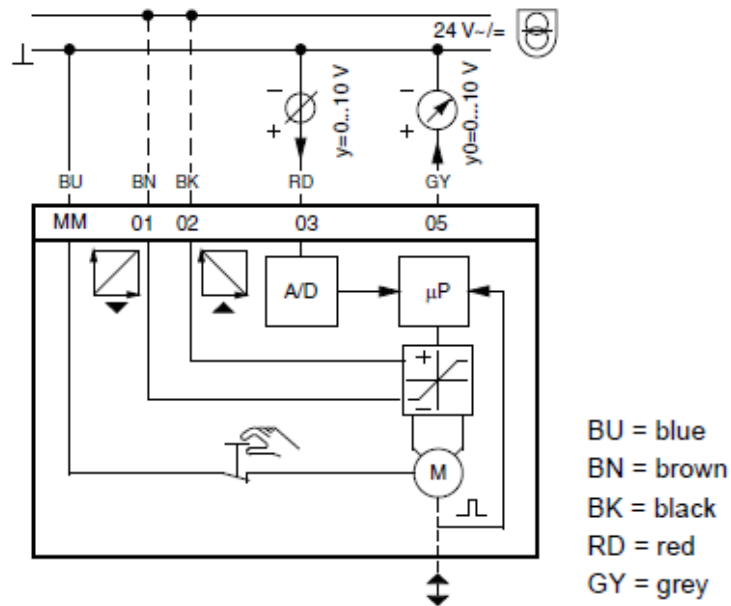


Model E

Component 3a : The 24V electrical 2 port valve is fitted to the primary flow port (inlet) on the heat exchanger assembly with the union provided. Ensure the valve orientation is correct flow A → AB into the heat exchanger. The drive is supplied with a flexible cable for connection to “customer” temperature control equipment. A ½” BSP connection is provided on the heat exchanger secondary flow port for customer secondary temperature sensor.



Actuator Wiring Details for the 2 Port Valve on Model E



The direction of response to the 0-10V control signal is reversible.

Direction of operation 1 (24V on the brown (BN) cable).

When the positioning signal is increased the actuator rod moves out and opens the valve.

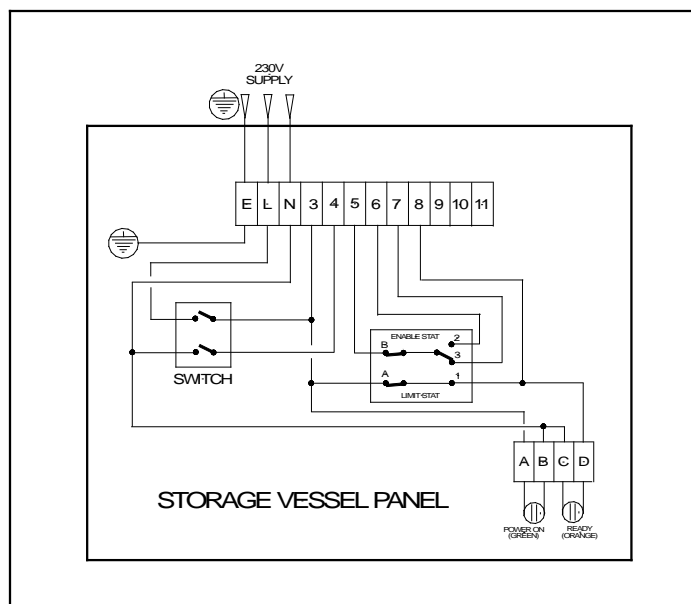
Direction of operation 2 (24V on the black (BK) cable).

When the positioning signal is increased the actuator rod moves in and closed the valve.

There are 3 dip switched in the actuator which are used for setting speed and valve characteristics. When set 1= OFF / 2=OFF / 3=ON the actuator will have a speed of 35 seconds and an =% response characteristic.

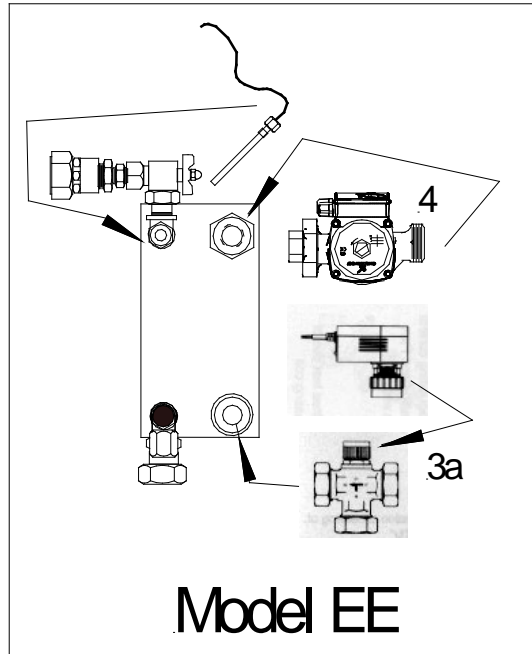
Econoplate BV Thermal Storage Vessel Control Panel.

As supplied the wiring of the panel is as shown and could be used in a similar way to the Model M if required

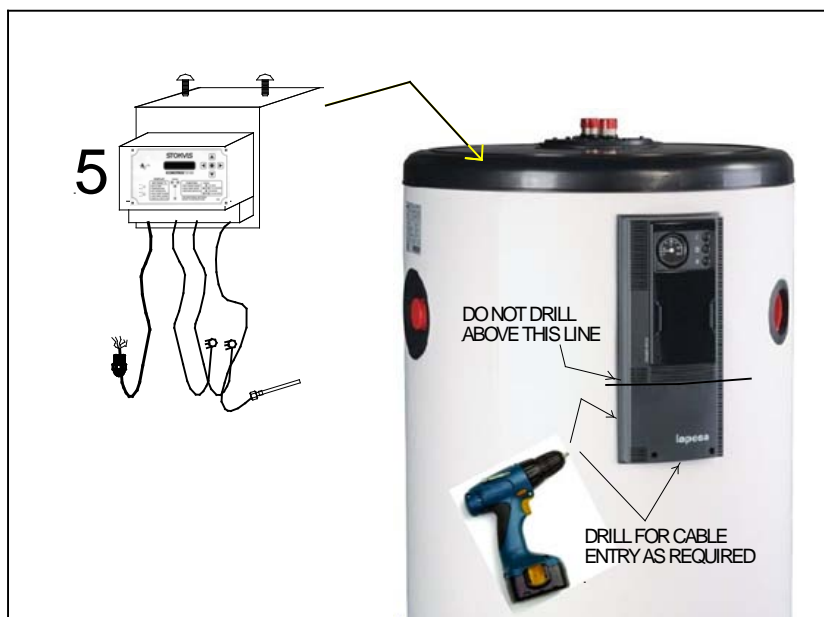


Model EE

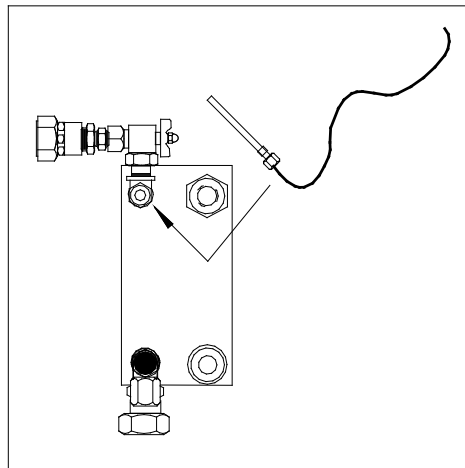
Component 3a & 4 : The 230V, 2 port valve (3a) is fitted to the primary return port on the heat exchanger assembly with the union provided. Ensure the valve orientation is correct flow A → AB away from the heat exchanger. **The primary pump (4)** is fitted to the primary inlet port on the heat exchanger with the union provided ensuring the pump shaft is in the horizontal plane. The flow direction on the pump should be into the heat exchanger.



Component 5 : The Econotrol™ Controller has a pre-mounting bracket which is used to attach it to the top of the thermal store using 2 x self tapping screws. It is provided with pre-wired flying leads, which should be plugged into both the primary and secondary pumps, a 5 core cable for the power and controls connection cable to the control panel of the thermal store and the prewired secondary temperature sensor. A cable gland has also been fitted to the Econotrol™ for entry of the flying lead fitted to the 2 port valve.



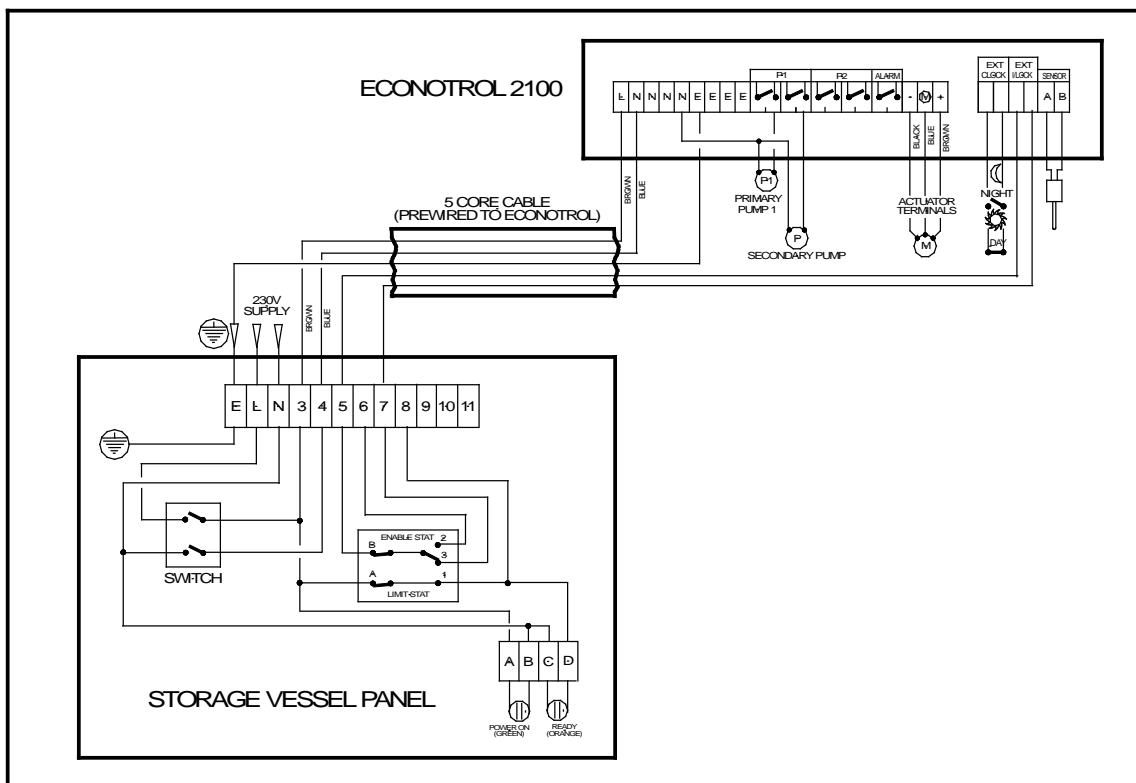
The PT100 sensor should now be fitted into the stud coupling located on the secondary flow from the heat exchanger, taking care not to over tighten against the olive.



With the Econotrol™ now mounted on the thermal store connect the 2 port control valve actuator wiring as detailed below.

The incoming supply wiring, should now be made to terminals L, N & E, in the control panel on the thermal store. The control panel requires drilling to suit, in a location as indicated above. In addition the 5 core cable from the Econotrol™ needs to be wired as below, this is for the supply and enable wiring to the Econotrol™. Drill to suit the PG11/M20 gland provided, again in the location indicated above.

Model EE Wiring Details



The Econoplate BV is now complete and ready for installation of other services.

COMMISSIONING

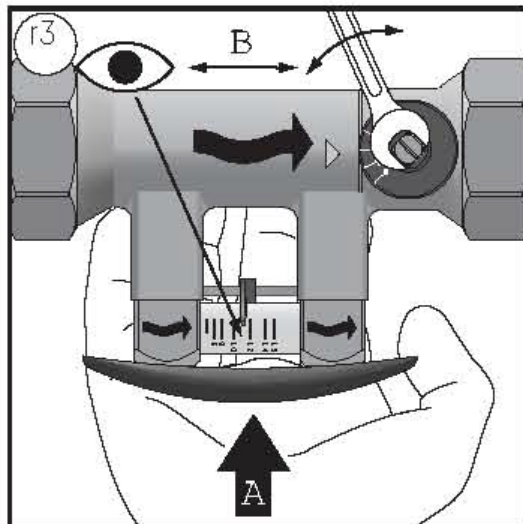
The Thermal Store Control Panel incorporates a combined thermostat for the enable (adjustable) and manual reset high limit thermostat (preset to 90°C).

The enable thermostat should be adjusted and set to the SWITCH ON temperature for hot water generation. There is a spring clip on the rear of the dial which can be used to restrict the setting of this thermostat if required (see below).



The Thermostatic Control Valve/ Econotrol™ should be set to give the desired secondary domestic hot water temperature set point - this should be set 5K above the setting of the enable thermostat.

The secondary flow rate around the heat exchanger and store should be set on the Taconova Setter Valve as indicated.



The figure in the Performance Guide under Continuous Output is the flow rate that should be set, for the Econoplate BV model supplied.

Primary flow rates should be set, on units without primary pumps (Models M & E) to the figure shown in the Technical Specification section of this document.

For Model EE, the Econotrol™ manual should be referred to for set up however the default settings will provide hot water from the heat exchanger at 60°C, 24/7. The only setting which MUST be changed is the Low Alarm which should be set to the correct differential to equal a 10°C setting, e.g Set the Low alarm to 50 when the set point temperature is 60.