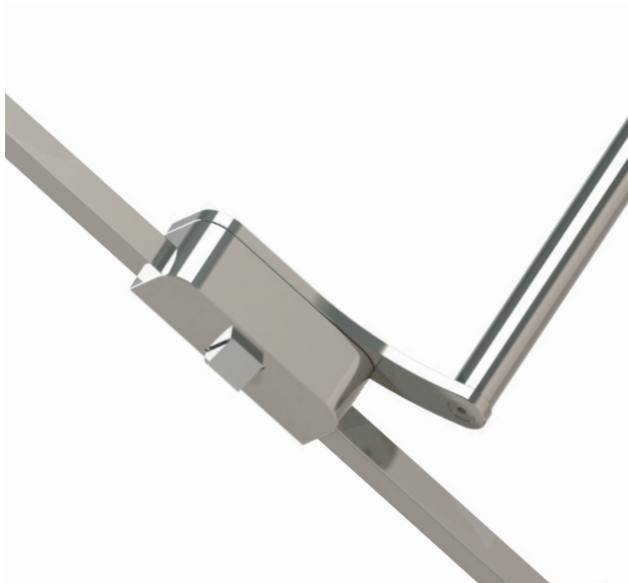
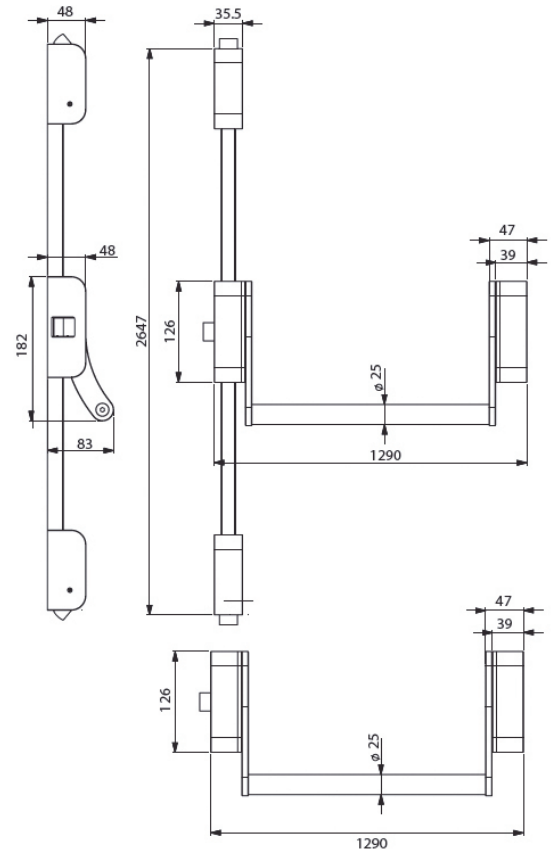


# D-FINE RANGE WITH PUSH BAR



## Technical Drawings



Technical drawings applicable to PHD150, PHD155, PHD157

## Grade 316 Stainless Steel D-Fine Antipanic Modular Push Bar Range

- The modular push bar panic exit device range comprises a full width cross bar and modular components (standard mechanism, idler and cross arm).
- The range offers a large degree of flexibility and can provide 1, 2 and 3 point latches (with horizontal or side entry pullman latches) and 2 or 3 point bolts (with vertical pullman latches).
- Suitable for high end public buildings such as Hotels, Leisure Centres and Spas where people are unfamiliar with surroundings.
- Suitable for corrosive atmospheres.
- Standard devices suitable for doors up to 2647mm high, 1290mm wide.
- Salt spray tested to 800 hours.



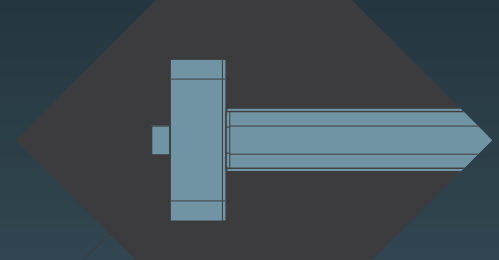
All Panic Hardware devices (with full width crossarm) have been tested and certified to EN1125 : 2008 (classification 3-7-7-B-1-4-2-2-A-A)

### Application

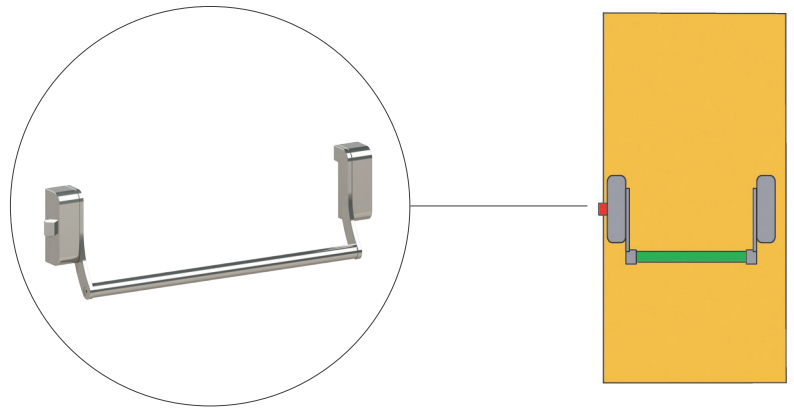
- Supplied with striker plates for timber doors.
- Strikes also available for PVC-U, Aluminium and Steel doors (Please specify when ordering).

### Outside access

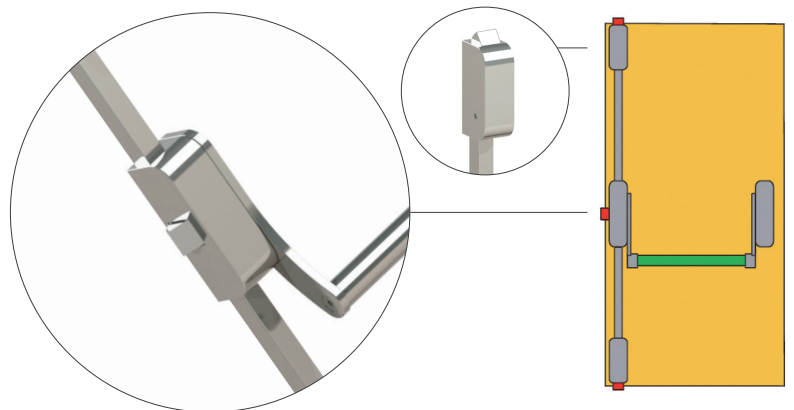
- Optional outside access device with lever handle to provide entry from the outside (See page 8 for further information).



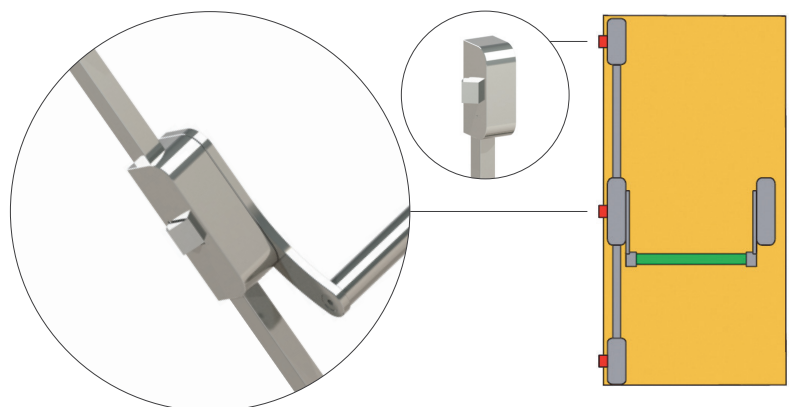
**PHD150 Reversible single point latch**



**PHD155 Reversible three point panic bolt**



**PHD157 Reversible three point panic latch**



A PHD154 Reversible two point panic bolt or a PHD159 Reversible two point panic latch for double doors is also available.