



HILLS
cubicles & washroom systems



Contents

Introduction	3
Materials Guide	3
Glacier	4,5
Ridge	6,7
Contour	8,9
Tor	10,11
Meadow	12
Artesian	13
Cove	14
Forest	15
Valley	16,17
Bayou	18
Canyon	19
Mix'n'Fix	20,21
Accessories	22
Colour Palettes	23



Hill Cubicles and Washroom Systems

First established in 1849 as a small joinery company in Durham, Hills Cubicles and Washroom Systems is now one of the best known cubicle and washroom brands in the United Kingdom.

After assisting with the war effort in both World Wars by switching production to the manufacture of materials crucial to the Allies, Hills further cemented their reputation as an innovative and quality joinery manufacturer by launching a new range of cubicle and washroom systems in the early 1950s, changing the design of public conveniences forever.

Now in its third century, Hills is still a formidable force within the joinery industry and continues to develop and launch cubicle and washroom solutions to meet modern-day needs and requirements. Hills' pioneering Research and Development team has continued to build on an unrivalled reputation and are wholly committed to ensuring that the range of cubicles and washroom systems offered remain on-trend and are of the high-quality that customers have come to expect.

Why Hills?

The Hills Range

Whether you require a single toilet or changing cubicle or a comprehensive washroom system, Hills will have a product suited for you.

The Made to Measure Range includes a variety of exciting styles, manufactured using quality materials to the highest specification. Choose from the delectable Meadow washroom installation with its hand-crafted components, the dynamic Valley changing cubicles with beautifully profiled frontages or the Bayou system, specifically created for youngsters who may still require adult supervision, plus many more.

Matching Made to Measure vanity units, pelmets, lockers, benches, concealed cistern panels, urinal screens and ducting panels, are also available to perfectly complement your washroom project.

The Mix 'n' Fix range is a modular cubicle system, perfect for projects that require a speedy installation within a short time-frame.

Moisture-resistant, standard-sized components are available 'off the shelf' in an array of eye-catching shades, allowing you to create your perfect colour scheme. Easy to install, this versatile range will allow you to create your perfect washroom cubicle layout to service all visitors, including those with mobility requirements.

All systems within the Hills range include height adjustable legs to assist installation and are covered under a three-year manufacturer guarantee.

For further customisation, hinges can be installed fall open or fall shut and outward opening doors can also be specified to create your desired washroom.

Materials Guide



Solid Laminate

When a cubicle or washroom system is specified for use in a demanding, heavy-use environment, our solid laminate range is the obvious choice. Impervious to humidity and consistent wetting, solid laminate is often installed within leisure complexes and sports facilities. Durable and easy-to-clean, the impermeable facings also resist dirt and bacteria and withstand consistent impact and damage, including scratches and cigarette burns, making our solid laminate products ideal for nightclubs and bars.

Solid Laminate Products: Contour; Glacier; Ridge; Tor.

Colours: 47 available.



Laminate Faced Chipboard

Perfect for dry, medium-heavy duty areas, such as office blocks, the Laminate Faced Chipboard (LFC) range offers a smoother finish and easy-to-clean surface. Available in a variety of eye-catching colours, the LFC range allows you to create an on-trend, hardwearing, yet practical, washroom facility.

Laminate Faced Chipboard Products: Artesian; Meadow.

Colours: 25 available.



V313 MFC

A dependable choice for use in medium-duty areas, V313 MFC is designed to withstand moisture and remain resilient against daily wear and tear. It is the perfect system for schools, transport hubs and shopping centres. Despite its excellent performance properties, it is not recommended to install a V313 MFC product in humid environments.

V313 MFC Products: Bayou; Canyon; Cove; Forest; Mix 'n' Fix; Valley.

Colours: 25 available.



Hills Cubicles & Washroom Systems

Units 1-4 Stadium Court, Wallis Road, Skippers Lane Industrial Estate, Middlesbrough TS6 6JB

Telephone 01642 469469

Email sales@hillscubicles.co.uk

Fax 01642 467711/467722

Website www.hillscubicles.co.uk





Glacier

Unleash your creative flair and choose the versatile **Glacier** option for your next cubicle and washroom project. Encompassing beautiful and skilled craftsmanship, **Glacier** includes aluminium uprights and matching head rail, resulting in a sturdy and quality system that will withstand heavy-traffic even in the most demanding conditions. Ideally suited for nightclub and bar applications, this versatile washroom allows for further customisation, including sculpted doors, if desired. The possibilities are endless...

Environment: Wet / Dry

Suggested Suitability: Heavy-Use; Health clubs, Spas, Nightclubs, Bars, Cinemas.

Materials: Solid Laminate. Metal fascias.

Ironmongery: Metallic palette options

Colours: Solid Laminate Palette



Indicator Bolt



Cubicle Leg



Slide Bolt



Hinge



Ridge

In an environment frequented by athletes and those who enjoy an active lifestyle, **Ridge** offers the robustness and quality required. Based on an innovative flexible aluminium system, **Ridge** is available in either solid laminate or MFC, resulting in a stylish addition to your washroom or changing facilities.

For added reassurance, the **Ridge** is reinforced with steadfast slim line pilasters and includes an à la mode head rail and indicator bolts for both security and privacy. Despite its arduous and comprehensive specification, the **Ridge** is available at an attractive price and workable lead time.

Environment: Wet / Dry

Suggested Suitability: Heavy-Use; Sports Stadia, Nightclubs.

Materials: Solid Laminate / V313 MFC.

Ironmongery: Metallic palette options

Colours: Solid Laminate Palette



Indicator Bolt



Cubicle Leg



Slide Bolt



Hinge





Contour

The **Contour** has been designed with the needs of youngsters and adult supervisors in mind and is ideally suited for swimming pools, leisure centres or any environment requiring a robust, water-proof cubicle system. Doors are curved and hung at a reduced height to allow for adult supervision, providing a non-threatening environment for infants to change in. The **Contour** is available in a range of eye-catching colours to match child-friendly décor, such as aqua, jungle and fairy tale themes.

Environment: Wet / Dry

Suggested Suitability: Heavy-Use; Children's Sports Facilities, Schools.

Materials: Solid Laminate. Tubular head rails included.

Ironmongery: Anodised aluminium.

Colours: Solid Laminate Palette



Indicator Bolt



Cubicle Leg



Slide Bolt



Hinge





Tor

Introducing Hills most vigorous cubicle and washroom specification, the **Tor** is an all-encompassing installation suitable for a variety of wet and dry atmospheres. An adaptable unit, which offers complete moisture resistance, the **Tor** is easy to clean and maintain and can endure the demands of consistent impact and general wear and tear, day after day. With distinctive black-finished ironmongery, the **Tor** will ensure that your next washroom project is unequalled and will certainly raise the bar for future concepts.

Environment: Wet / Dry

Suggested Suitability: Heavy-Use; Camp Sites, Health Clubs, Spas, Leisure Centres, Sports Stadia, Swimming Pools, Shower Facilities.

Materials: Solid Laminate

Ironmongery: Powder coated aluminium.

Colours: Solid Laminate Palette



Indicator Bolt



Cubicle Leg



Slide Bolt



Hinge



Indicator Bolt



Cubicle Leg



Slide Bolt



Hinge

Meadow

When a touch of panache is required for your next washroom project, look no further than the luxurious **Meadow** system. Superbly hand-crafted using lasting laminate-faced V313 chipboard, this unique restroom choice never fails to impress and is ideally suited for art galleries, museums and exclusive hotels. Complementary vanitory units are also available to order; a selection of charming storage solutions to suit the level of sophistication garnered by the exquisite, but reliable **Meadow**.

Environment: Dry / Humid.

Suggested Suitability: Heavy-Use; Golf Clubs, Museums, Art Galleries, Restaurants, Hotels, Night Clubs, Conference Centres.

Materials: Laminate faced V313 chipboard. Post formed fascias and head rails.

Ironmongery: Polished aluminium.

Colours: MFC Palette



Artesian

Beautifully balancing functionality and style, the **Artesian** system is a superb alternative to standard cubicles usually found in medium-use areas. With smooth contours and post-formed fascias and headrails, this visually-striking and unique installation is even suitable for those with a restricted budget. Hard-wearing and easy to clean, vanity units are also available to beautifully complement the **Artesian**.

Environment: Dry

Suggested Suitability: Medium-Use; Shopping Centres, Offices, Supermarkets, Service Stations.

Materials: Laminate faced post formed fascias and headrails; 18mm MFC doors and partitions; V313 core material providing additional moisture resistance.

Ironmongery: Anodised aluminium.

Colours: MFC Pallet



Indicator Bolt



Cubicle Leg



Slide Bolt



Hinge



Indicator Bolt



Cubicle Leg



Slide Bolt



Hinge

Cove

Despite being on the move, commuters and travellers will be sure to remember their visit to a **Cove**-styled restroom. **Cove** moves out-dated and unstylish transit conveniences forward into the new millennium. With smooth aluminium components and matching headrails, **Cove** can be supplied in an array of on-trend colours. Allow visitors to freshen up using the complementary **Cove** vanity units. Pelmet, wall panels and ducting are also available, resulting in an all-embracing washroom and cubicle system that can endure heavy footfall.

Environment: Dry

Suggested Suitability: Medium-Use; Motorway Service Stations, Airports, other Transport Hubs.

Materials: V313 MFC.

Ironmongery: Metallic palette options.

Colours: MFC Palette



Forest

Just because you expect your cubicle system to withstand heavy use, does not mean you have to compromise on quality and style. With hard-wearing aluminium extrusions factory fitted to all edges of the doors, fascias and partitions, the **Forest** installation is best suited for atmospheres requiring increased moisture resistance. Perfect for areas that are frequently used by people of all ages, such as caravan parks, camp sites and shopping centres. Despite its robust specification, the **Forest** still exudes a professional flair.

Environment: Dry / Humid

Suggested Suitability: Medium-Use; Caravan Parks, Camp Sites, Public Houses, Shopping Centres, Factories.

Materials: V313 MFC. Aluminium edging to doors and panels.

Ironmongery: Anodised aluminium.

Colours: MFC Palette



Indicator Bolt



Cubicle Leg



Slide Bolt



Hinge



Valley

Encouraging shoppers to visit changing rooms and try on potential purchases can sometimes be impossible. Put off by tired-looking, poorly-lit and dank facilities, shoppers will welcome the contemporary **Valley** cubicle system. With stylish shaped frontages and resilient ironmongery, the **Valley** can inspire you to create a unique changing room facility for a variety of store types, including boutiques, specialist clothes shops or High Street chains. Choose from a range of palette options to match décor or corporate colour schemes, including striking wood grain finishes and vibrant colours.

Environment: Dry

Suggested Suitability: Medium-Use; Retail changing facilities.

Materials: V313 MFC.

Ironmongery: Anodised aluminium.

Colours: MFC Palette



Indicator Bolt



Cubicle Leg



Slide Bolt



Hinge



Indicator Bolt



Cubicle Leg



Slide Bolt



Hinge

Bayou

Fun and friendly, the **Bayou** cubicle system is ideal for children's washroom or changing room applications. With reduced height contoured frontages and available in vibrant, eye-catching colours, a visit to the bathroom no longer has to be an intimidating experience for young children. Doors, fascias and panels are manufactured from hard-wearing, moisture-resistant MFC, making the **Bayou** a durable choice for restrooms that are frequented by little, yet lively, boys and girls.

Environment: Dry

Suggested Suitability: Medium-Use; Nurseries, Schools.

Materials: V313 MFC.

Ironmongery: Satin Anodised or Yellow / Blue powder coated aluminium.

Colours: MFC Palette



Canyon

Easy to install and cost-effective, **Canyon** is a desirable cubicle and washroom system. Flexible, yet resistant, choose from a selection of vibrant colour options to create your perfect W.C. enclosures. Perfectly suited for fast food premises and restaurants, the **Canyon** installation can withstand medium-level footfall and easily resists impact and general wear and tear expected in such end-uses. Include **Canyon** in your next project and create something amazing today with this versatile, modular-based system.

Environment: Dry

Suggested Suitability: Medium-Use; Fast food outlets, Restaurants, Public houses.

Materials: V313 MFC.

Ironmongery: Anodised aluminium.

Colours: MFC Palette



Indicator Bolt



Cubicle Leg



Slide Bolt



Hinge

Mix 'n' Fix

When a cubicle and washroom project requires a timely installation during a short time-frame, but style cannot be compromised, the Hills **Mix 'n' Fix** range is the answer.

Improved moisture-resistant V313 MFC core material in standard-sized components are available 'off the shelf' in a variety of popular and widely-used colour options. Colours can be mixed allowing you to create a resilient, yet refined washroom and cubicle system that superbly complements its surroundings and ultimate end-use. Versatile and flexible, specifiers, contractors and clients alike are able to create fantastic and all-encompassing layouts to service whoever frequents your restroom facilities, including those with mobility requirements, all at a competitive cost.

Practicality has not been compromised in the search for style and flexibility. Installation is refreshingly straight-forward with all MFC components pre-drilled to assist easy fixing and fitting. Resilient, smooth-finished aluminium ironmongery is supplied in pack form for easy specification and height adjustable legs also assist installation.

Environment: Dry

Suggested Suitability: All dry, medium-use applications.

Materials: V313 MFC.

Ironmongery: Anodised aluminium ironmongery.

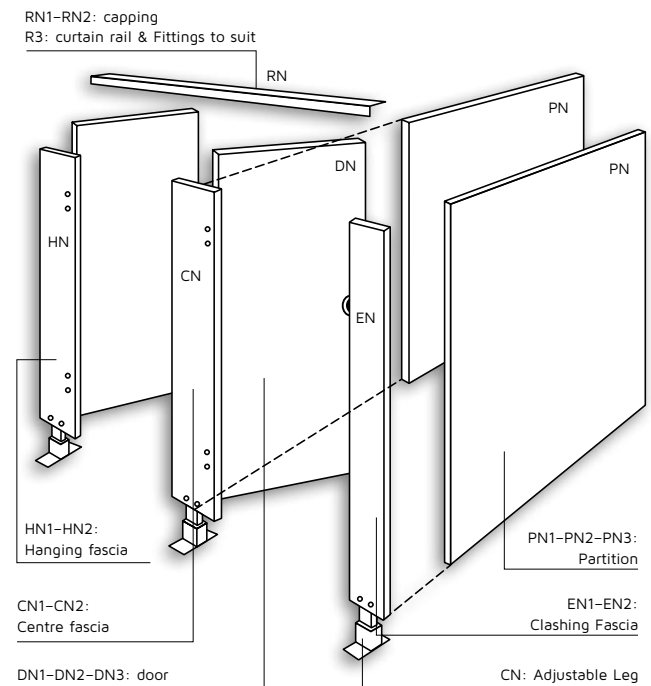
Colours: Mix 'n' Fix Palette

How To Order

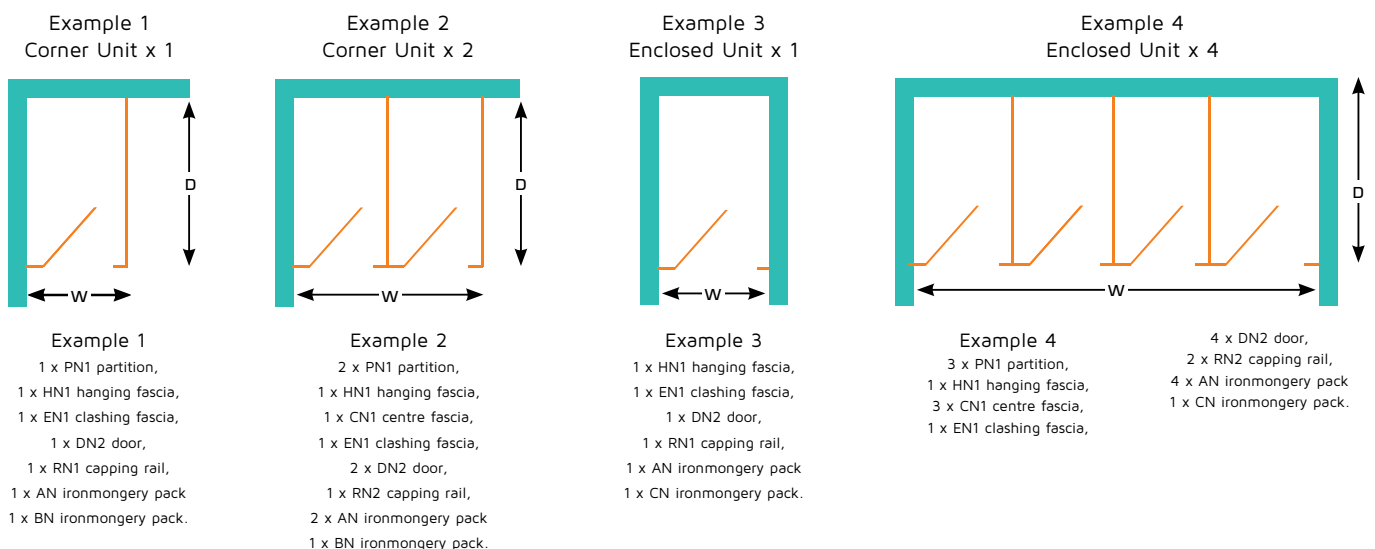
Questions

- 1) Is this for a wet or dry area? – if wet (i.e. includes showers) then contact Hills Cubicles for a quote – if dry then continue
- 2) Where are the walls? – see examples
- 3) What are the dimensions? – see examples
- 4) How many cubicles are required in the space available? – typical size of a single unit is 1550 deep (D) 800 wide (W)
- 5) What colour is required? – choose from colour palette.

The diagram (right) highlights the standard components available to build your Mix 'n' Fix cubicles. Use the diagram along with the 'How to Order' guide to help choose your system.



For below examples (all based on cubicle size 1550 x 800 and multiples thereof) you will need:

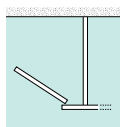


Other overall widths and depths can be accommodated by using different sized components or by onsite cutting of components but the basic formats should be as above. Call 01642 469469 or refer to our Technical Guide for further guidance.



Mix 'n' Fix ironmongery is supplied in packs:

Pack 'AN' Select one pack for every cubicle.

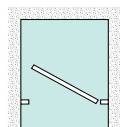


Code 28290 £113.00

Contains:

- 1 x Indicator bolt, including keep and screws
- 1 x Pair hinges (fix through fascia)
- 1 x Leg, bush screws and 2 no.10 x 1 1/2" screws
- 6 x Fixing brackets, bush screws and fixing screws: 6 no.10 x 1 1/2" (wall)
- 6 x 6 no.10 x 3/4" (partition to fascia)
- 2 x Rubber buffers and 2 no. 6 x 3/4" screws (fix to fascia for anti-finger trap)
- 8 x Rawlplugs
- 4 x 8 x 1 1/2" screws (fix capping to fascia)

Pack 'CN' Select one pack for each enclosed configuration regardless of the number of cubicles.

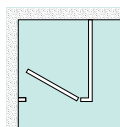


Code 28292 £29.00

Contains:

- 1 x Leg, bush screws and 2 no.10 x 1 1/2" screws (leg)
- 2 x Rawlplugs

Pack 'BN' Select one pack for each corner configuration regardless of the number of cubicles.

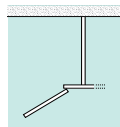


Code 28291 £39.00

Contains:

- 3 x Fixing brackets, bush screws and 6 no.10 x 1 1/2" screws
- 1 x Leg, bush screws and 2 no. 10 x 1 1/2" screws
- 8 x Rawlplugs

Pack 'DN' Select one pack for each outward opening door.



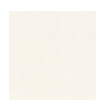
Code 28293 £6.00

Contains:

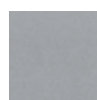
- 1 x Open-out keep and screws

Specification				White		Dusty Grey		Magnolia		Oslo Blue		Grey Sky		Moss	
DN	DN1	Door	1816 x 582 mm	20470	£51.00	20570	£57.00	20670	£54.00	20770	£69.00	20870	£64.00	20970	£69.00
	DN2		1816 x 635 mm	20471	£54.00	20571	£59.00	20671	£58.00	20771	£73.00	20871	£69.00	20971	£73.00
	DN3		1816 x 900 mm	20472	£63.00	20572	£68.00	20672	£68.00	20772	£87.00	20872	£82.00	20972	£87.00
PN	PN1	Partition	1816 x 1524 mm	27870	£113.00	27970	£126.00	28070	£126.00	-	-	-	-	-	-
	PN2		1816 x 1800 mm	27871	£125.00	27971	£140.00	28071	£140.00	-	-	-	-	-	-
	PN3		1816 x 1200 mm	27872	£105.00	27872	£116.00	28072	£116.00	-	-	-	-	-	-
CN	CN1	Centre Fascia	1816 x 200 mm	24770	£30.00	27570	£33.00	27770	£31.00	-	-	-	-	-	-
	CN2		1816 x 300 mm	24771	£33.00	27511	£37.00	27771	£34.00	-	-	-	-	-	-
EN	EN1	Clashing Fascia	1816 x 100 mm	21070	£26.00	22070	£29.00	24370	£27.00	-	-	-	-	-	-
	EN2		1816 x 150 mm	21071	£28.00	22071	£32.00	24371	£29.00	-	-	-	-	-	-
HN	HN1	Hanging Fascia	1816 x 100 mm	24470	£26.00	24570	£29.00	24670	£27.00	-	-	-	-	-	-
	HN2		1816 x 150 mm	24471	£28.00	24571	£32.00	24671	£29.00	-	-	-	-	-	-
OE	OE1	Edging Strip	2m	28370	£3.00	28371	£3.00	28372	£3.00	28373	£3.00	28374	£3.00	28375	£3.00
VNW	VNW1	Vanity Unit Top	2400 x 600 mm	28770	£68.00	28870	£75.00	28970	£72.00	29070	£92.00	29170	£89.00	29270	£92.00
	VNW2	Downstand	2400 x 300 mm	28771	£54.00	28871	£59.00	28971	£57.00	29071	£70.00	29171	£69.00	29271	£70.00
RN	RN1	Aluminium	914 mm	28190	£14.00										
	RN2	Capping Rail	1828 mm	28191	£21.00										
COMPONENTS	OE1	Toilet Roll Holder		57999	£23.00										
	OE2	Hat and Coat Hook		58099	£8.00										
	OE4	Floor to Ceiling Post	3m	58999	£111.00										
	OE5	Floor to Ceiling Sockets	Pair	59099	£23.00										
	OE13	Indicator Bolt		28490	£41.00										
	OE14	Pair of Hinges		28590	£27.00										
	OE15	U Brackets		28690	£27.00										
	OE16	Double Cap Nuts	10	30599	£19.00										

Mix 'n' Fix palette



White*†



Dusty Grey*†



Magnolia*†



Oslo Blue*



Grey Sky*



Moss*

*Colour available for doors.

† Colour available for fascias and partitions.



Hills Cubicles offer a range of additional products to complement your project enabling you to create a multi-functional bathroom or changing facility. Ask us about our range of:



Lockers
Vanity tops & pelmets
Benches
Duct Panels

Visit our website for more details or alternatively contact us directly on 01642 469469 to order your copy of the Hills brochure.

www.hillscubicles.co.uk

Hills standard colour palettes

MFC palette



Hills Cubicles & Washroom Systems are available in a wide range of colours, to enable you to create innovative and eye-catching washrooms.

See the availability chart (below) to find out which colours apply to your chosen product, then make your selection from the relevant palettes shown.

Alternative colour palette options are also available upon request.

Solid laminate palette



Ironmongery palette (available for Cove, Glacier and Ridge ranges)





Visit our website for more details or alternatively
contact us directly on 01642 469469 to order
your copy of the Hills brochure

PREMDOR®



www.hillscubicles.co.uk

