



PURE CARE: TOPAZ

**PC**  
Pure Care  
Tufted Range



# Heckmondwike Tufted Range

Tufted Range

## Features and Benefits

- Low installation costs
- Available in 4 metre width
- Fully impervious backing
- Popular in care environments, sheltered housing & nursing homes
- Passes the relevant flammability test
- Bleach resistant
- Antistatic
- Highly resistant to permanent staining
- Suitable for general contract applications



Products	Page
Total Care	52 - 53
Pure Care	54 - 55



TC

Total Care

Tufted Range



Bergamot



Cinnamon



Iris



Juniper



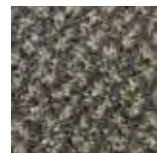
Paprika



Saffron



Orchid



Smoke



# Heckmondwike Total Care

Tufted Range


A heavy contract tufted carpet, Total Care is ideally suited to care environments, student accommodation and medical centres. With full impervious backing and high resistance to staining, it passes the Health Care Supply Council test for impermeability and comes in 4 metre widths. Available in ten attractive colours, this carpet will look great from the moment it is installed and for many years to come.



Spice



Violet

Specification	Total Care
Fibre Construction	1/8" Crossover cut pile tufted 100% Solution dyed Polypropylene
Colour Fastness	Light (BS EN ISO 105:B02) >6 Wet Rubbing (BS EN ISO 105:B01) 4-5 Dry Rubbing (BS EN ISO 105:X12) 5 Bleach (Camraso) 5
Flammability	BS5287 Assessment and labelling of Textile Floorcoverings tested to BS4790 (Hot Metal Nut Test) - Low Radius of Char
Electrostatic Propensity	(Walking Test) BS ISO 6356:2000: Less than 2.0kv at 25% RH
Impermeability	(Health Care Supply Council Test): Pass
Formats	Sheet 
Backing	Aqua-Bac Impervious
Size	4 metre
Weight	3100gm metre <sup>2</sup>
Thickness	10mm





PC

Pure Care

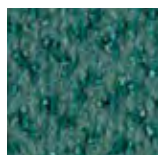
Tufted Range



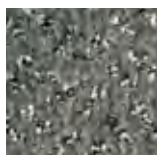
Amber



Amethyst



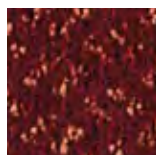
Aquamarine



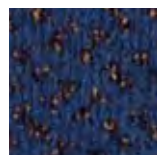
Jet



Emerald



Garnet



Opal



Pearl



# Heckmondwike Pure Care

Tufted Range

A beautiful carpet that looks at home in a number of care environments and offers high stain resistance. Available in 4 metre widths, it is fully impervious backed and bleach resistant, making it ideal for care environments, sheltered accommodation and nursing homes.



Sapphire



Topaz

Specification	Pure Care
Fibre Construction	1/8" Crossover cut pile tufted 100% Solution dyed Polypropylene
Colour Fastness	Light (BS EN ISO 105:B02) 6 Wet Rubbing (BS EN ISO 105:B01) 5 Dry Rubbing (BS EN ISO 105:X12) 4-5 Bleach (Camraso) 4-5
Flammability	BS5287 Assessment and labelling of Textile Floorcoverings tested to BS4790 (Hot Metal Nut Test) - Low Radius of Char
Electrostatic Propensity	(Walking Test) BS ISO 6356:2000: Less than 2.0kv at 25% RH
Impermeability	(Health Care Supply Council Test): Pass
Formats	Sheet 
Backing	Aqua-Bac Impervious
Size	4 metre
Weight	2700gm metre <sup>2</sup>
Thickness	9mm