

Amtico 36+ LVT : a safe choice

Enhanced Slip Resistance

Planks & Tiles

Antimicrobial Protection

Safety flooring doesn't have to be sheet

Safety floors that deliver sustainable slip resistance and meet the requirements of the enhanced slip standard, but with the enhanced design possibilities of LVT planks and tiles.

2 Collections
1 Solution
Total peace
of mind



Enhanced slip
Enhanced slip resistance for the lifetime of the product.



Antimicrobial
Proven to reduce bacteria present by more than 99% over 24 hours*



Design freedom
Flexible plank and tile sizes including two parquet options.

Why specify a safety floor?

According to the HSE, almost all slips happen when flooring is wet or contaminated with anything from oil to food debris and even dust. The best way to combat slips and trips is to minimise the potential risks, and part of this solution is to specify a reliable safety floor.

Our safety floors meet the requirement for very heavy commercial use but still have the luxury design aesthetic you expect from Amtico planks and tiles. Amtico safety floors achieve R10* and ≥ 36 (wet)* ratings but also meet the requirements of the enhanced slip standard** and are shown to offer enhanced slip resistance for the lifetime of the product.

*BS EN 16165

**BS EN 13845



Amtico Spacia 36+ | Muted Oak, Stripwood

When is a safety floor not a safety floor?

It must meet the BS EN 13845 Enhanced Slip Standards.

In order to adhere to the criteria for BS EN 13845, Amtico safety flooring has to pass an abrasion test. Our safety LVT achieved the highest rating, which is 50,000 cycles.

This test involves constant cycles of abrasion under pressure, as well as the continuous application of grit to replicate accelerated wear over time. This demonstrates the longevity of the flooring, as well as its sustainable slip resistance. Achieving BS EN 13845 demonstrates a floor's sustainable slip resistance throughout its life and isn't simply passing ex-factory tests.

The difference between non-safety R10 floor and an Amtico 36+ floor is that the Amtico 36+ floor has a sustained slip resistance meaning it will retain enhanced slip resistance over time.

Some companies will claim R10 ratings meet the standard of a safety floor, but these are 'ex-factory' or 'out of the box' ratings, which are only guaranteed at the point of installation.



Amtico Spacia 36+ | Weathered Oak, Herringbone

Did you know?

Slips and trips are the most common cause of injuries in the workplace, costing employers £565million per year.*

* Source: HSE.gov.uk

A safe choice

The science behind slip-resistance

Don't learn the hard way, specify floors with enhanced slip resistance where students are always on the go. High traffic areas like corridors, canteens and communal spaces need that extra protection.



Amtico Spacia 36+ | Nordic Oak, Stripwood

A safe way of working

With slips and trips being the biggest cause of injuries to the workforce, responsible design is key. Choose floors that offer sustained slip resistance for additional peace of mind.



Amtico Spacia 36+ | Urban Salvaged Timber, Stripwood

Don't serve up slips

A safety floor isn't just for back of house, though it can help. Our 36+ offer doesn't scrimp on design, meaning it can easily be used in lobbies, bars, restaurant and retail areas for a warm welcome.



Amtico Spacia 36+ | Villa Concrete & Capri, Broken Bond

The safest road to recovery

A safe healthcare environment isn't just about reducing slips and trips, hygiene is key too. Inbuilt antimicrobial protection means our 36+ floors can also contribute to improved hygiene between cleaning cycles.



Amtico Spacia 36+ | Lichen, Bonded Stone

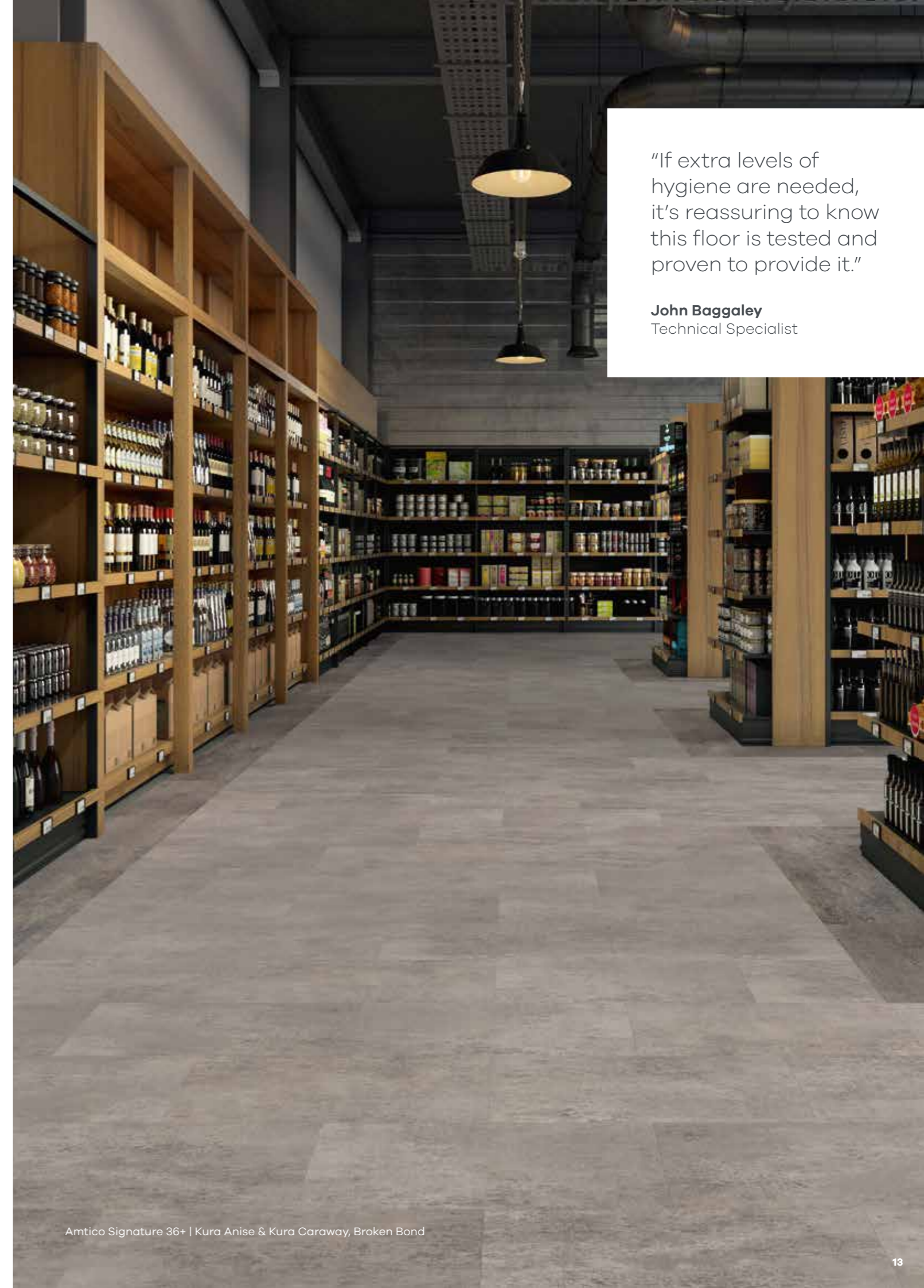
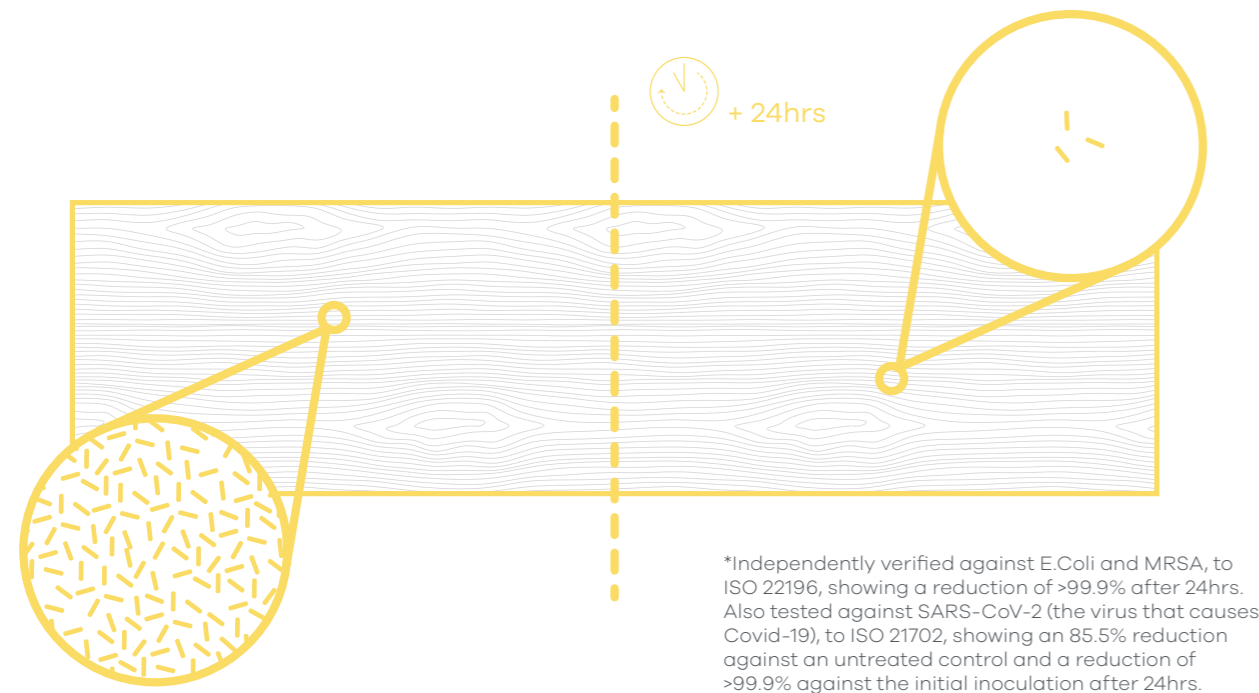
Antimicrobial protection

Protection from MRSA and E.coli

Amtico safety LVT is manufactured with integral antimicrobial protection.

Under independent tests this active ingredient has been proven to reduce bacteria growth by 99.9% over 24 hours* when compared with standard product of a similar type and construction.

This means Amtico Safety LVT brings an extra level of defence, giving you peace of mind between cleanings.



"If extra levels of hygiene are needed, it's reassuring to know this floor is tested and proven to provide it."

John Baggaley
Technical Specialist

Multiple Performance System

Enhanced slip resistance for the floor's lifetime.

Our unique, in-house manufacturing technique distributes slip resistant particles throughout the wear layer. This means enhanced slip performance over the floor's lifetime and longer lasting slip resistance than products with particles only in the coating.

Amtico safety floors are:



Ortho-Phthalate Free



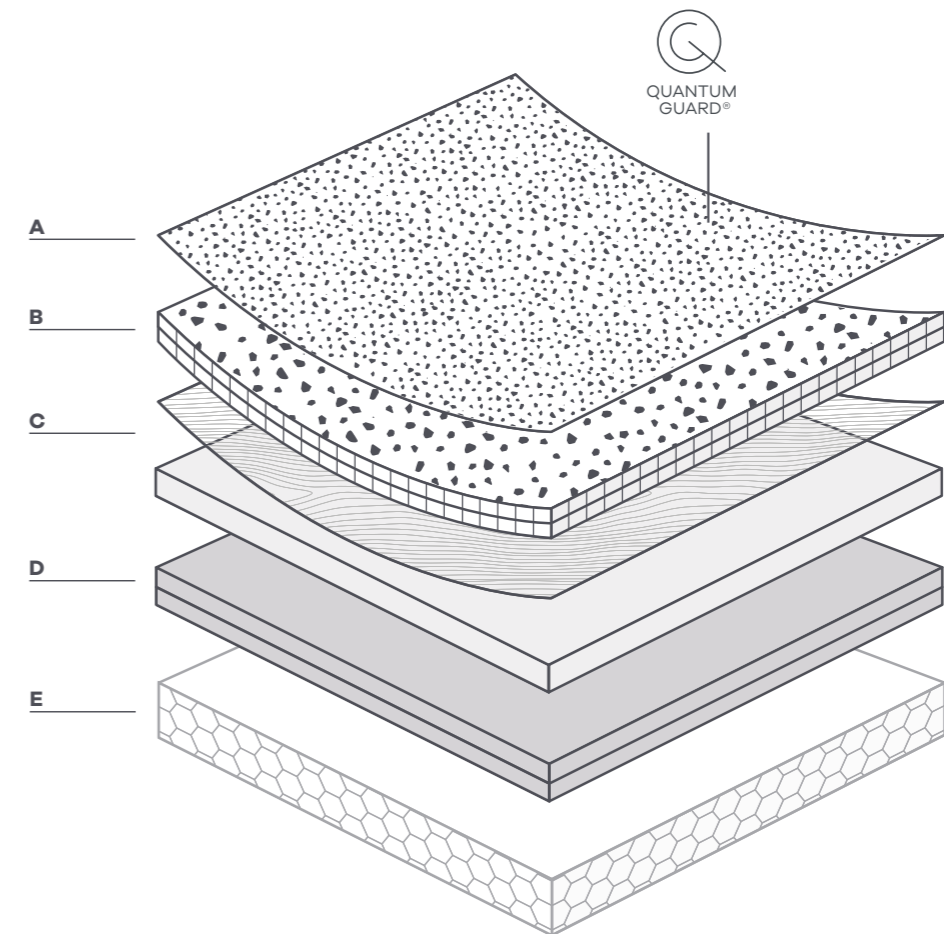
A low emission product



Made with recycled content and recyclable

The crowning feature of our Multiple Performance System is our Quantum Guard® urethane layer. Combined with the slip resistant polymeric microspheres. Quantum Guard®

- Enhances durability
- Is easy to clean
- Protects the appearance of the product



A. Quantum Guard®

Polymeric microspheres are included in the patented urethane formula for enhanced slip resistance, and the durable, low gloss finish provides resistance against abrasions and stains.

B. Superior 1mm wear layer

Gives excellent impact resistance and high clarity, allowing the product designs to shine through. Includes crushed ceramic particles for enhanced slip resistance.

C. Design layers

High resolution print layers over deeply coloured base layers create the distinctive Wood, Stone and Abstract designs that set Amtico apart.

D. Backing layer

The foundation of the product which provides long lasting stability. Contains up to 30% recycled content.

E. Acoustic backing layer (optional)

Reduces the impact sound by up to 17dB and provides an extra level of comfort underfoot.

Shown here in Signature 1.0mm wear layer LVT

A plank and tile solution

Our planks are precision cut and bevelled for an authentic finish, something that cannot be achieved with a sheet product.

Amtico 36+ is also available in small and large Parquet for added design options.



Amtico Signature 36+ | Halo Pine, Large Parquet

Sustainability

WE BELIEVE:

LEADING MANUFACTURERS SHOULD BE CLIMATE LEADERS, TOO.



IF WE CAN REDUCE SOME WASTE, WE CAN REDUCE ALL WASTE.



WE WOULD BE NOTHING WITHOUT OUR 582-STRONG FAMILY.



OUR GOAL IS MAKING FLOORING FIT FOR THE FUTURE.



Our approach to the future of flooring is all about data, real targets and hard work. Find out more about how we're building a better business and more sustainable future for us all.



Read our full sustainability strategy at [amico.com/wherewestand](https://www.amtico.com/wherewestand)



Experience design freedom....

amtico signature

Signature 36+ delivers sustainable slip resistance and meets the requirements of the enhanced slip standard, combined with the same extraordinary design philosophy that defines Amtico Signature, and comes with a 20 year Commercial warranty.



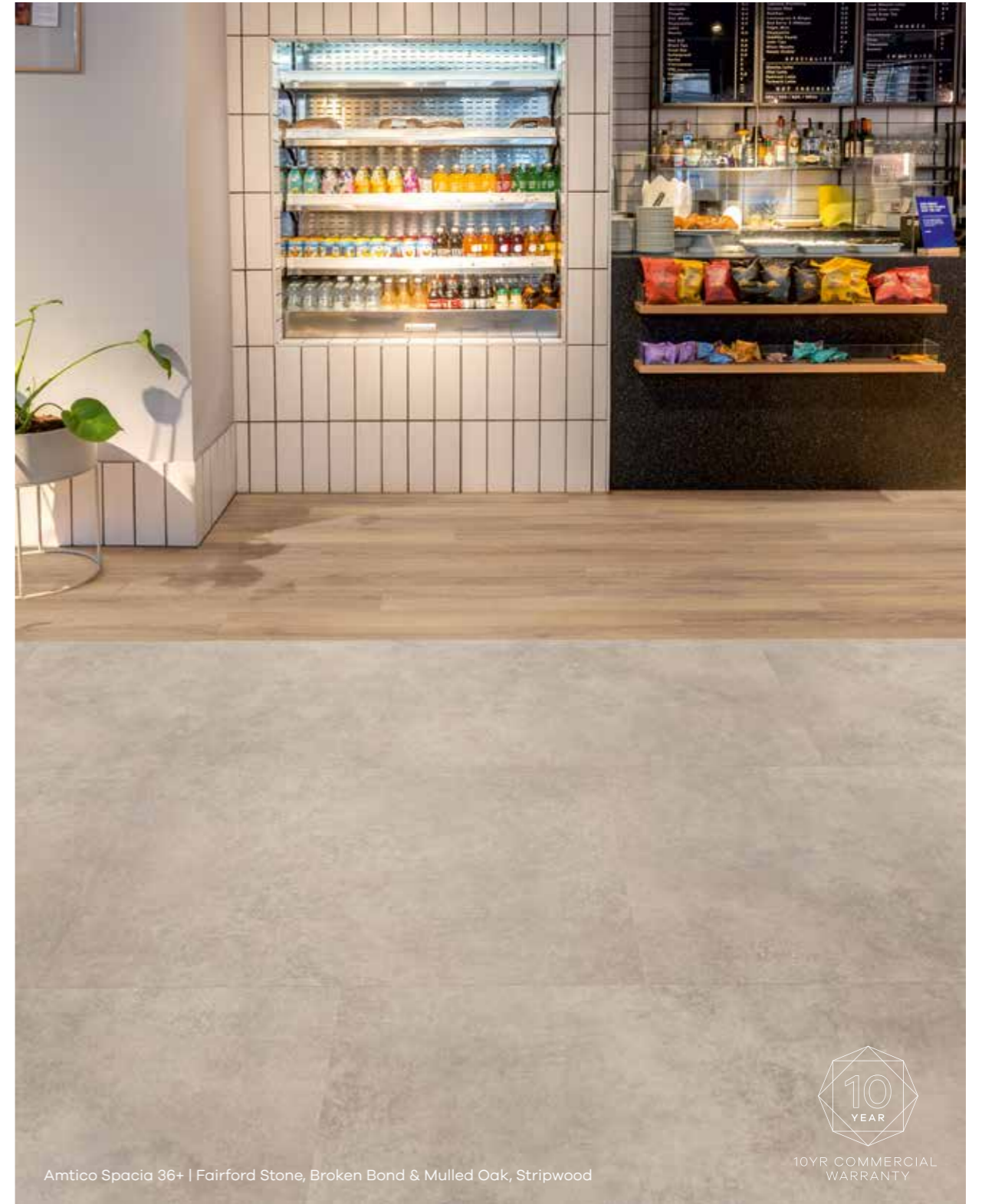
Amtico Signature 36+ | Alpine Oak, Stripwood



20YR COMMERCIAL WARRANTY

amtico spacia

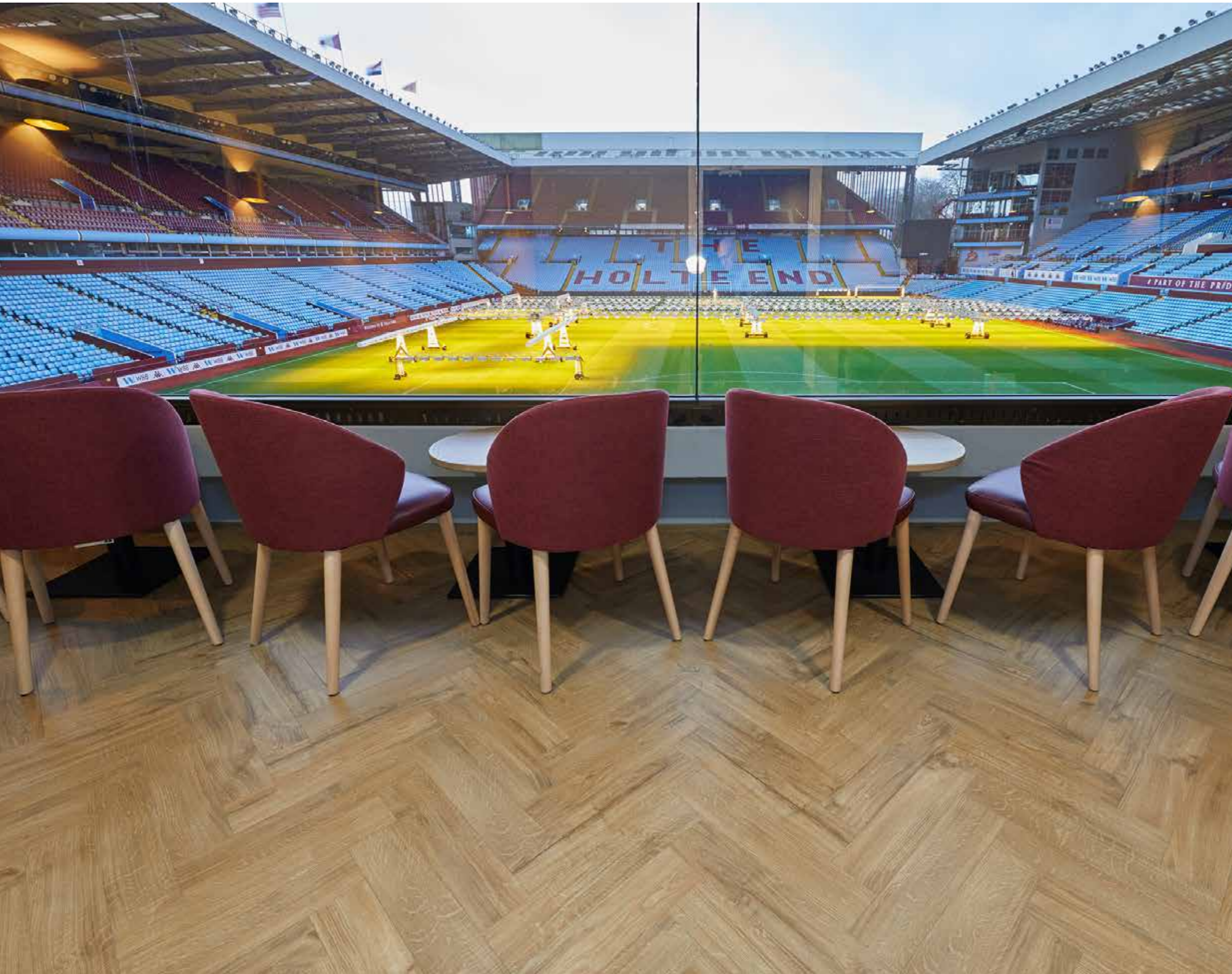
Made for any commercial space where safety is paramount, Spacia 36+ LVT is made up of slip-resistant particles and antimicrobial technology, for long-lasting performance. Available with a 10 year Commercial warranty.



Amtico Spacia 36+ | Fairford Stone, Broken Bond & Mulled Oak, Stripwood



10YR COMMERCIAL WARRANTY



Highlights

Location
Birmingham, UK

Sector
Hospitality & Leisure

Collection
Amtico Spacia 36+

6,400
sq ft total area

36+
Enhanced
Slip Resistance

2
Products used

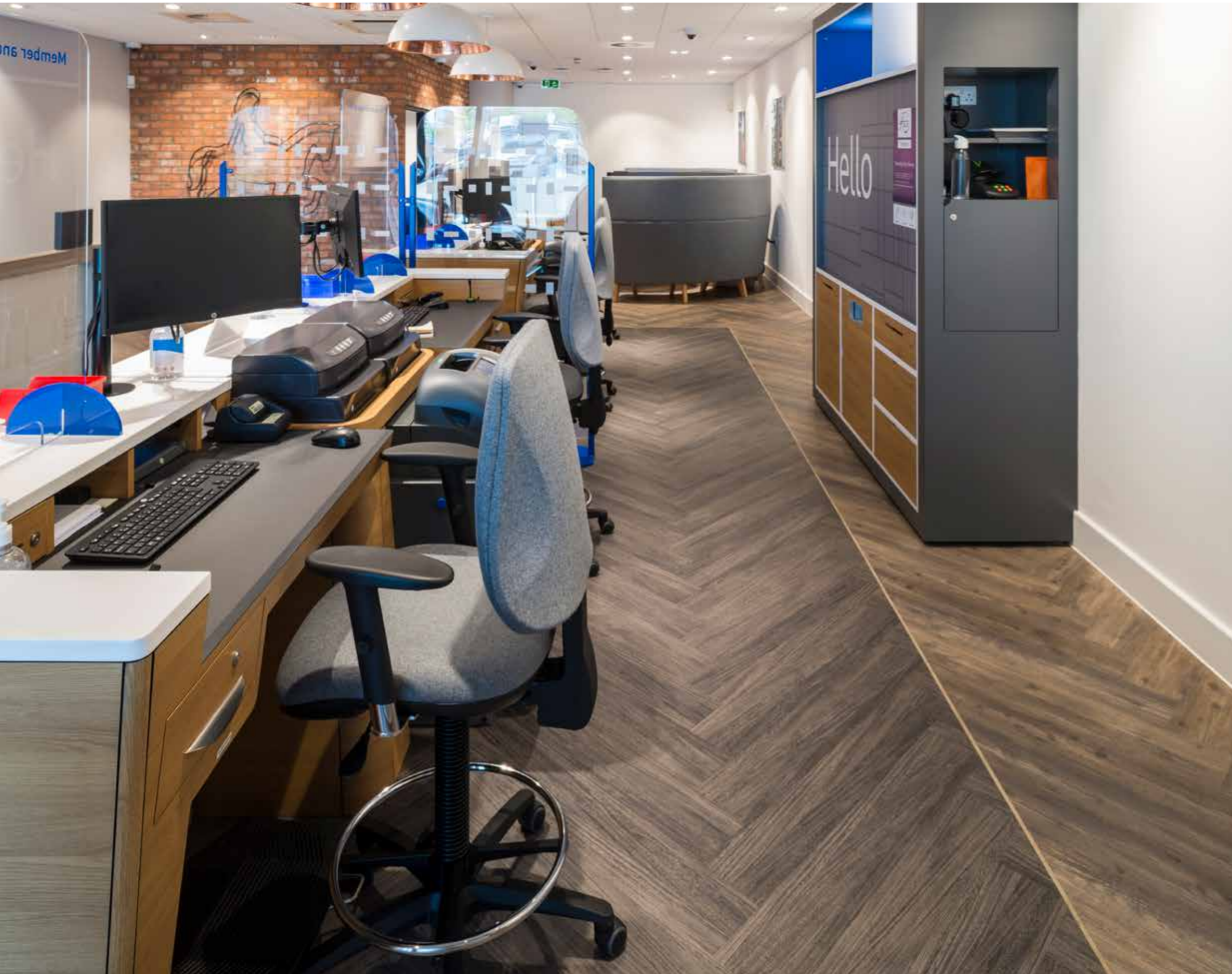
■
"The Gas Lamp was an important project for Aston Villa FC, Levy UK and Benchmark, bringing an underused area up to high quality hospitality use. The Amtico Spacia 36+ range allowed the flooring to be stylish, functional and cost effective."

Paul Smith, Projects Director
Benchmark



View this project on
our website





Highlights

Location
Coventry, UK

Sector
Retail

Collection
Amtico Signature 36+

36+

Enhanced
Slip Resistance

2

Products used

20

Year commercial
warranty



“Tasked with creating a modern and customer-friendly environment that could also cope with high levels of footfall expected from a retail space, pHp Architects took Allen International’s design forward and implemented it throughout the branch network. As a result, Amtico’s Signature 36+ was chosen for its consistent performance and ability to meet the specific demands of the branch.”



View this project on
our website



amtico

flooring

Amtico UK & European Sales

Solar Park Southside
Solihull, West Midlands
B90 4SH, UK
+44 (0) 121 745 0800
samples@amtico.com

South European Sales

Español: +44 (0) 121 745 0895
English: +44 (0) 121 745 0842
Sales.southeurope@amtico.com
Samples: info@amtico.de

Amtico Head Office

Kingfield Road
Coventry
CV6 5AA, UK
+44 (0) 24 7686 1400
samples@amtico.com

Amtico International Germany

Im Taubental 11
41468 Neuss, Germany
+49 (0) 2131 359 16 0
info@amtico.de

Amtico International France

36 Avenue Hoche
75008 Paris, France
+33 (0) 1 55 38 95 70
info@amtico.fr

Amtico International Scandinavia

St Olofsgatan 11A
753 21 Uppsala
+46 (0) 8 584 233 24
info@amtico.se

Amtico International Asia

Rm 2003
20/F OfficePlus @ Wan Chai
303 Hennessy Rd, Hong Kong
+852 2327 7703
samples@amtico.com

Amtico International Middle East, Africa & India

8th Floor
Building Number 2
J&G DMCC, Dubai, UAE
+971 (0) 50 192 33 46
samples@amtico.com

Amtico International Pty Ltd Australia & New Zealand

Unit 1, 40 Mill Street,
Yarrabilba 4207
Australia
australia.orders@amtico.com

amtico.com

Visit amtico.com for more information on our product range, inspiring ideas, maintenance and installation advice. Every effort is made to achieve accurate reproduction of products in this brochure, however printing limitations can be misleading. Selection of products should be made from actual samples. Samples are small pieces cut from standard tiles. They give only a general indication of the design. Tone and shading can vary slightly from batch to batch and it is not possible to guarantee that the sample will exactly match the material supplied. The policy of the Company is one of continuous development and improvement and the right is reserved to add or delete from the range or change patterns without prior notification. All metric sizes are rounded. All products are manufactured in line with EN ISO 10582 and EN1307. Brochure correct at the time of printing.