

modric 



## **MODRIC THE BRITISH DESIGN CLASSIC**

Modric was the original. The first ironmongery range with a uniform aesthetic across a co-ordinated range. Providing a consistent faultless finish, modric changed the industry as we knew it. As design and technology has advanced, modric has remained at the forefront of product innovation. Today, modric represents a timeless design classic both designed and made in Britain. In these times of increasing globalisation, you can be certain that modric has not travelled the globe to land at your project. Manufactured in our own factory by craftsmen who are both passionate and proud to be associated with modric and exactly what it stands for.

**Truly iconic British design and manufacturing.**









## **GUARANTEED DURABILITY**

Allgood has built its reputation by supplying high quality products designed to last. Modric remains true to these principles. Take the lever handle for instance. Solid grade 316 stainless steel bar provides the highest level of corrosion resistance, providing material performance for years to come. Operating on the truly unique Quadaxial fixing rose, the modric lever handles have been independently tested to BS EN 1906 proving the pedigree of the most durable fixing on the market today.









## PRECISION ENGINEERING

The design quality of the modric range is the result of utilising the finest grade steel bar combined with the highest level of attention to detail. Using our own custom engineered tools, our UK based manufacturing plant fabricates modric to the very finest of tolerances.





## **HAND FINISHED**

Our polishers take great pride in their work. It takes years of experience to become qualified and only the most skilled graduate to polishing modric. Combining the finest level of satin finish with the attention to detail that only a specialist hand polisher can achieve, ensures that the quality of the modric finish cannot be surpassed.







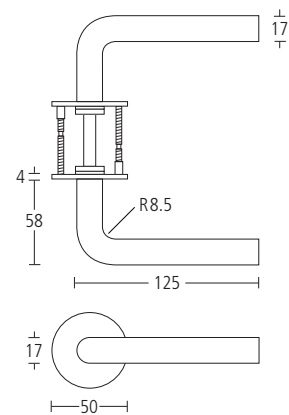


SS3508

## MODRIC LEVER HANDLES ON QUADAXIAL FIXING ROSES

- Solid grade 316 satin stainless steel
- Hand finished
- Independently tested to BS EN 1906

4 7 - 1 1 4 0 U

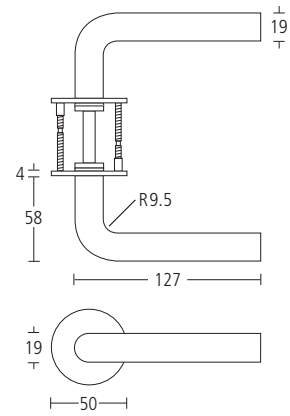


## SS3509

### MODRIC LEVER HANDLES ON QUADAXIAL FIXING ROSES

- Solid grade 316 satin stainless steel
- Hand finished
- Independently tested to BS EN 1906

4 7 - 1 1 4 0 U



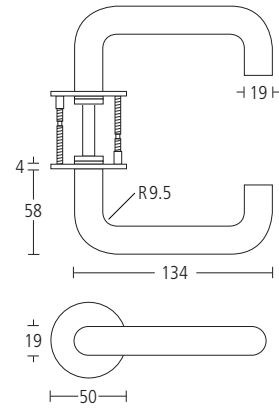


## SS3510

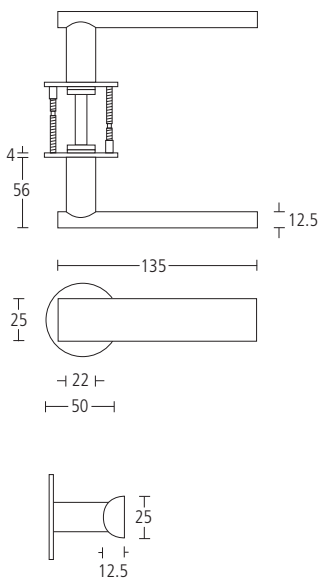
### MODRIC LEVER HANDLES ON QUADAXIAL FIXING ROSES

- Solid grade 316 satin stainless steel
- Hand finished
- Independently tested to BS EN 1906

4 7 - 1 1 4 0 U



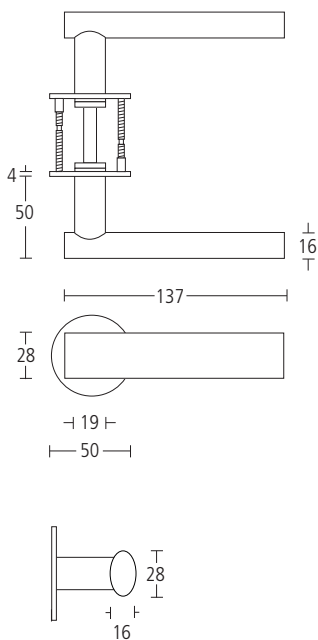




**SS3520  
MODRIC LEVER HANDLES ON  
QUADAXIAL FIXING ROSES**

- Solid grade 316 satin stainless steel
- Hand finished
- Independently tested to BS EN 1906

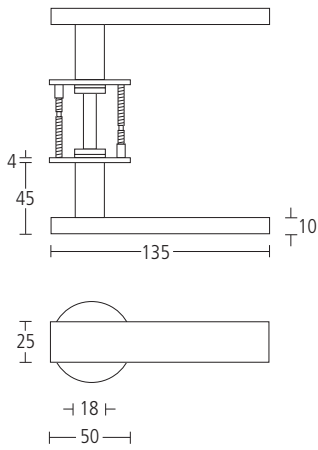
4	7	-	1	1	4	0	U
---	---	---	---	---	---	---	---



**SS3530**  
**MODRIC LEVER HANDLES ON**  
**QUADAXIAL FIXING ROSES**

- Solid grade 316 satin stainless steel
- Hand finished
- Independently tested to BS EN 1906

4 | 7 | - | 1 | 1 | 4 | 0 | U

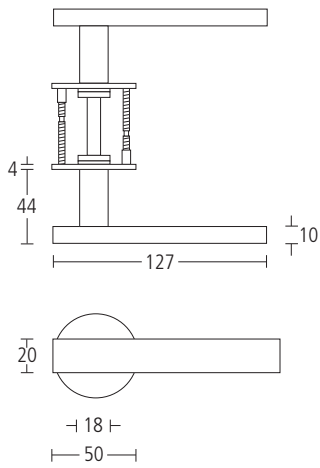


**SS3540**  
**MODRIC LEVER HANDLES ON**  
**QUADAXIAL FIXING ROSES**

- Solid grade 316 satin stainless steel
- Hand finished
- Independently tested to BS EN 1906

4 | 7 | - | 1 | 1 | 4 | 0 | U



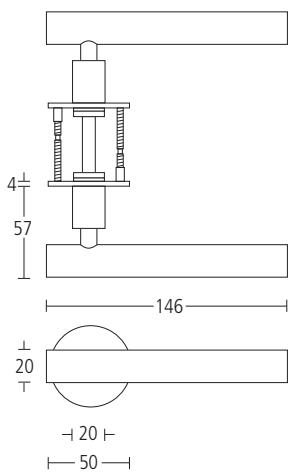


**SS3545**  
**MODRIC LEVER HANDLES ON**  
**QUADAXIAL FIXING ROSES**

- Solid grade 316 satin stainless steel
- Hand finished
- Independently tested to BS EN 1906

4 | 7 | - | 1 | 1 | 4 | 0 | U

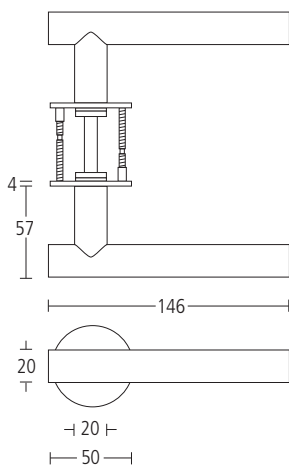




**SS3550  
MODRIC LEVER HANDLES ON  
QUADAXIAL FIXING ROSES**

- Solid grade 316 satin stainless steel
- Hand finished
- Independently tested to BS EN 1906

4 | 7 | - | 1 | 1 | 4 | 0 | U



**SS3560**  
**MODRIC LEVER HANDLES ON**  
**QUADAXIAL FIXING ROSES**

- Solid grade 316 satin stainless steel
- Hand finished
- Independently tested to BS EN 1906

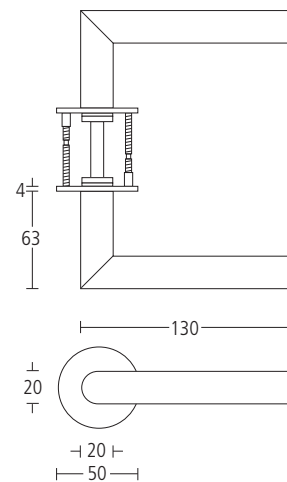
4 | 7 | - | 1 | 1 | 4 | 0 | U

SS3570

**MODRIC LEVER HANDLES ON  
QUADAXIAL FIXING ROSES**

- Solid grade 316 satin stainless steel
- Hand finished
- Independently tested to BS EN 1906

4 7 - 1 1 4 0 U









**SS6598**

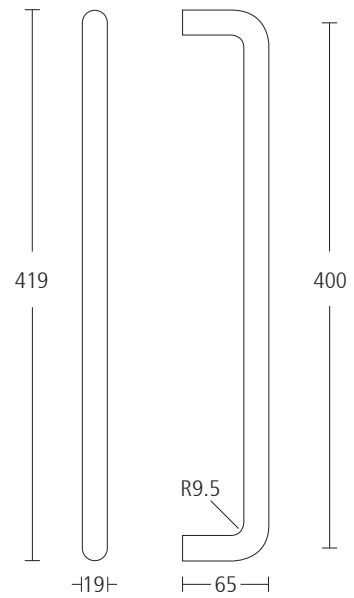
**MODRIC PULL HANDLE  
400MM CENTRES**

- Bolt through fixing
- Solid grade 316 satin stainless steel
- Hand finished

**SS6598SFF**

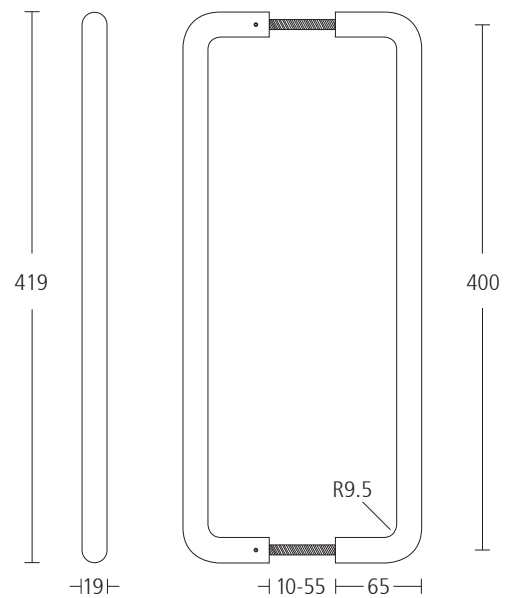
**MODRIC PULL HANDLE  
400MM CENTRES**

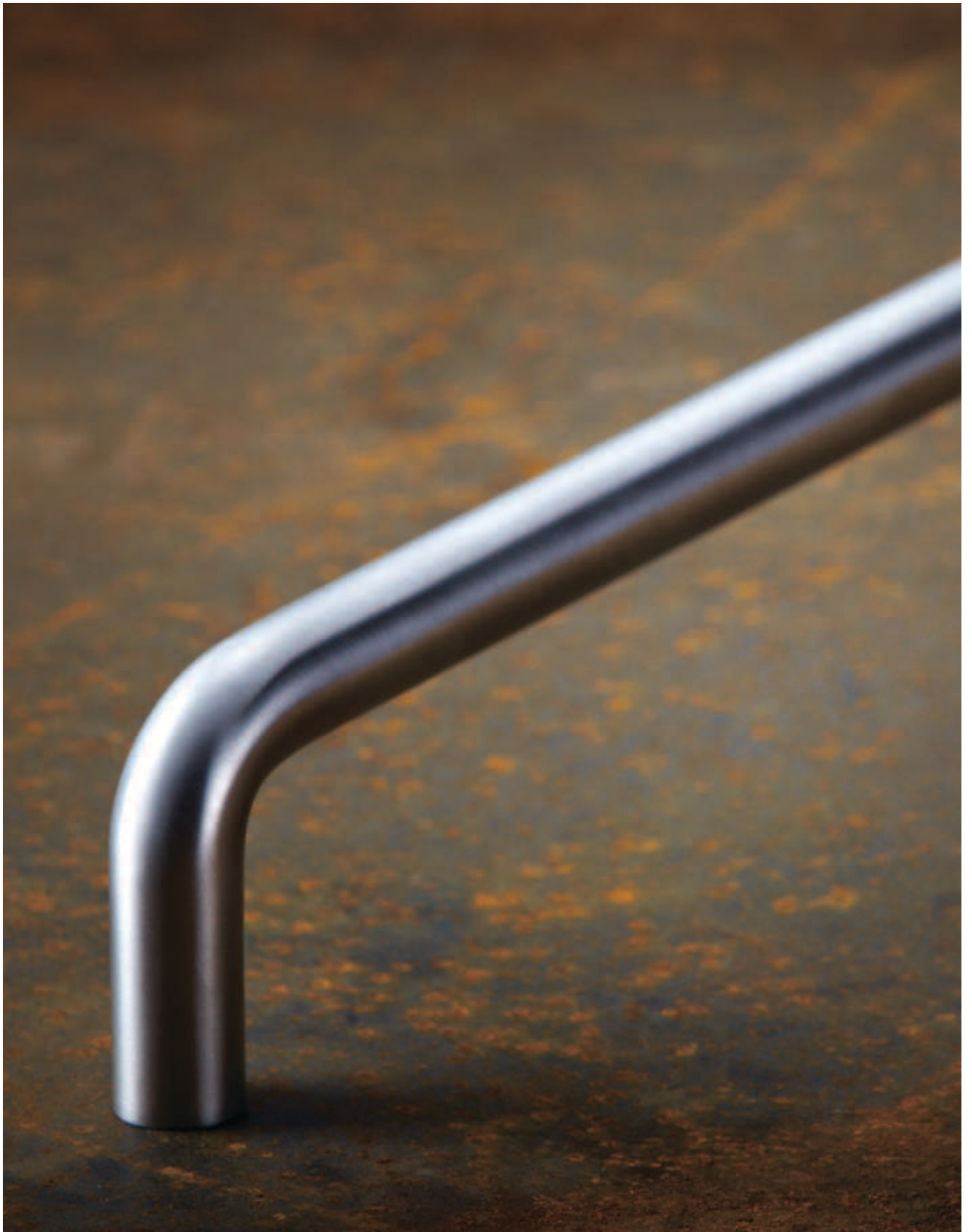
- Secret face fixing
- Solid grade 316 satin stainless steel
- Hand finished



**SS6598BB**  
**MODRIC PULL HANDLES**  
**400MM CENTRES**

- Back to back fixing suitable for timber or glass doors
- Solid grade 316 satin stainless steel
- Hand finished

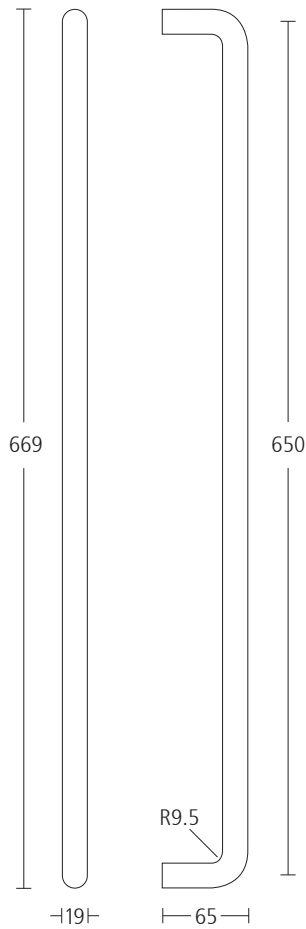




## SS6599

### MODRIC PULL HANDLE 650MM CENTRES

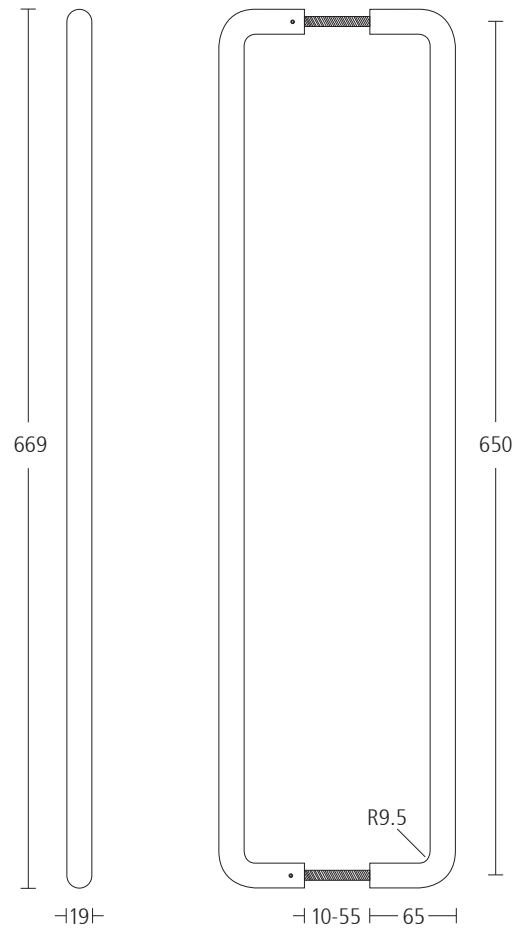
- Bolt through fixing
- Solid grade 316 satin stainless steel
- Hand finished



## SS6599BB

### MODRIC PULL HANDLES 650MM CENTRES

- Back to back fixing suitable for timber or glass doors
- Solid grade 316 satin stainless steel
- Hand finished



## SS6599SFF

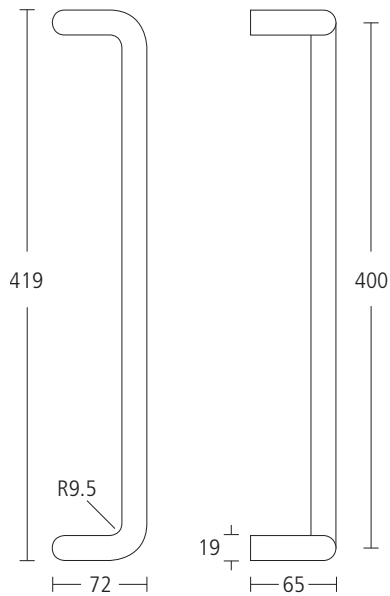
### MODRIC PULL HANDLE 650MM CENTRES

- Secret face fixing
- Solid grade 316 satin stainless steel
- Hand finished

## SS6598C

### MODRIC CRANKED PULL HANDLE 400MM CENTRES

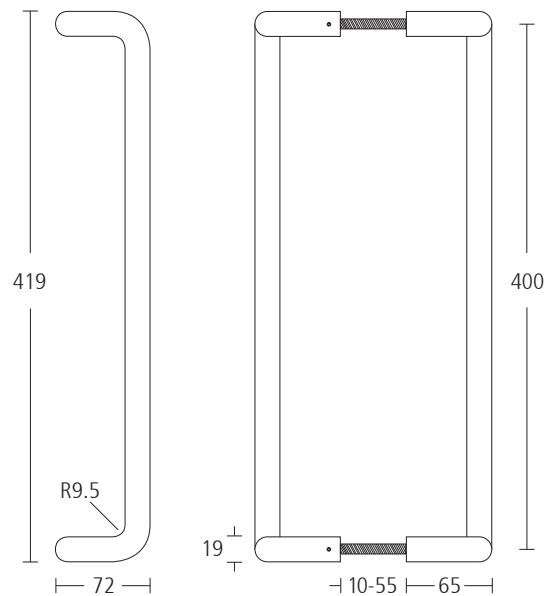
- Bolt through fixing
- Solid grade 316 satin stainless steel
- Hand finished



## SS6598CBB

### MODRIC CRANKED PULL HANDLES 400MM CENTRES

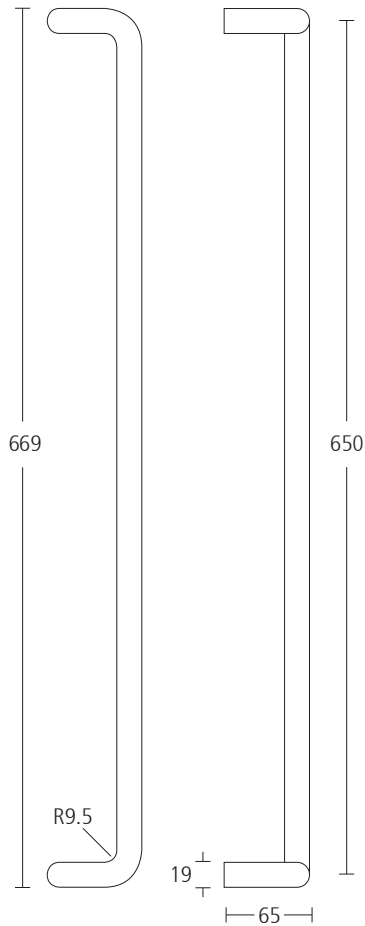
- Back to back fixing suitable for timber or glass doors
- Solid grade 316 satin stainless steel
- Hand finished



## SS6599C

### MODRIC CRANKED PULL HANDLE 650MM CENTRES

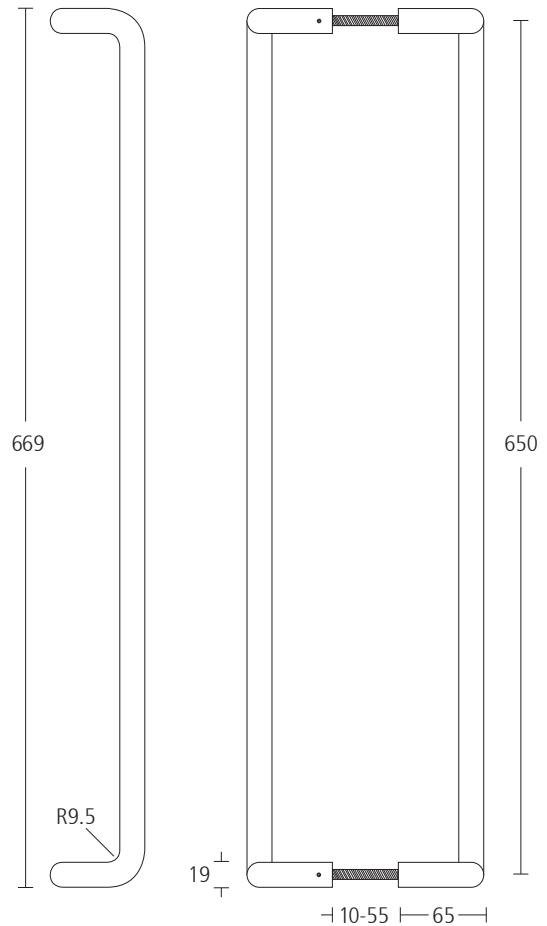
- Bolt through fixing
- Solid grade 316 satin stainless steel
- Hand finished



## SS6599CBB

### MODRIC CRANKED PULL HANDLES 650MM CENTRES

- Back to back fixing suitable for timber or glass doors
- Solid grade 316 satin stainless steel
- Hand finished









**SS1720**  
**MODRIC PULL HANDLE**  
**400MM CENTRES**

- Bolt through fixing
- Grade 316 satin stainless steel
- Hand finished

**SS1720BB**

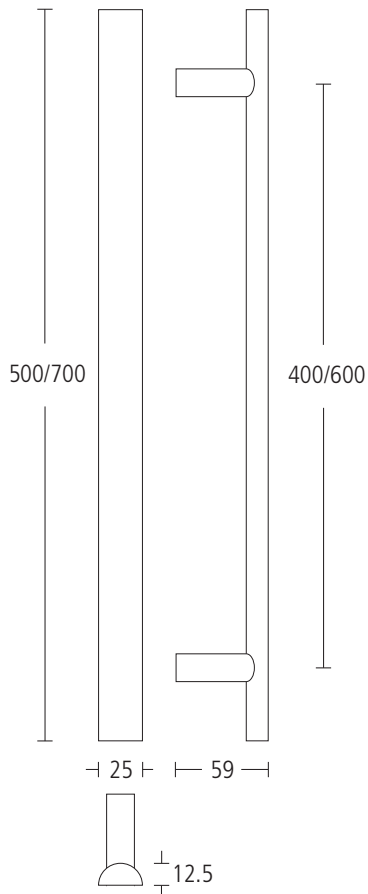
Pair, as above, with back to back fixing suitable for timber or glass doors

**SS1721**  
**MODRIC PULL HANDLE**  
**600MM CENTRES**

- Bolt through fixing
- Grade 316 satin stainless steel
- Hand finished

**SS1721BB**

Pair, as above, with back to back fixing suitable for timber or glass doors





**SS1730  
MODRIC PULL HANDLE  
400MM CENTRES**

- Bolt through fixing
- Grade 316 satin stainless steel
- Hand finished

**SS1730BB**

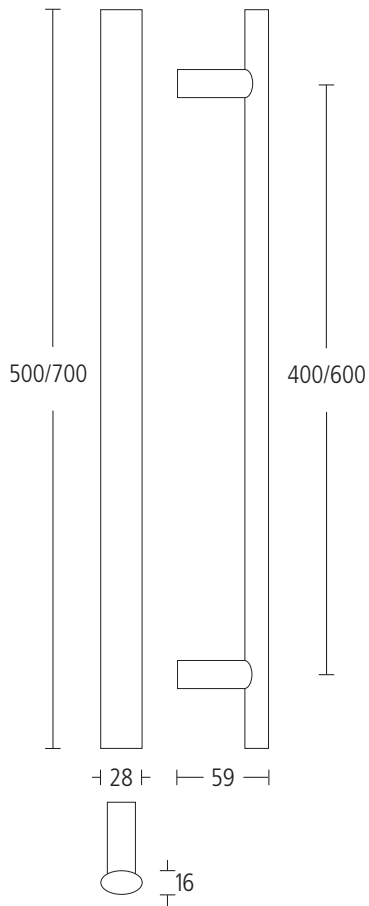
Pair, as above, with back to back fixing suitable for timber or glass doors

**SS1731  
MODRIC PULL HANDLE  
600MM CENTRES**

- Bolt through fixing
- Grade 316 satin stainless steel
- Hand finished

**SS1731BB**

Pair, as above, with back to back fixing suitable for timber or glass doors





**SS1740**  
**MODRIC PULL HANDLE**  
**400MM CENTRES**

- Bolt through fixing
- Grade 316 satin stainless steel
- Hand finished

**SS1740BB**

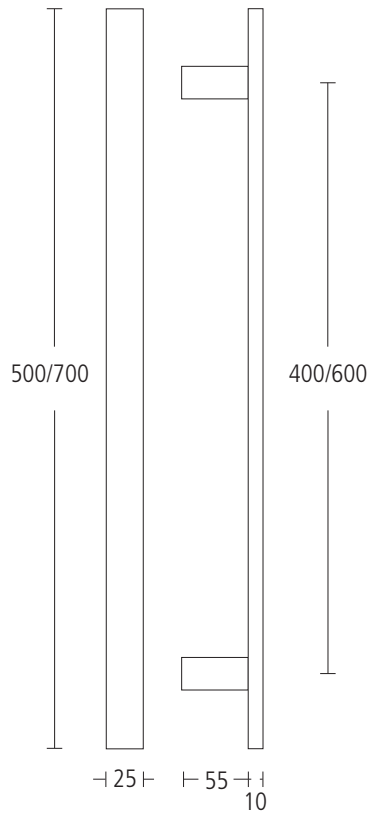
Pair, as above, with back to back fixing suitable for timber or glass doors

**SS1741**  
**MODRIC PULL HANDLE**  
**600MM CENTRES**

- Bolt through fixing
- Grade 316 satin stainless steel
- Hand finished

**SS1741BB**

Pair, as above, with back to back fixing suitable for timber or glass doors





**SS1745**  
**MODRIC PULL HANDLE**  
**400MM CENTRES**

- Bolt through fixing
- Grade 316 satin stainless steel
- Hand finished

**SS1745BB**

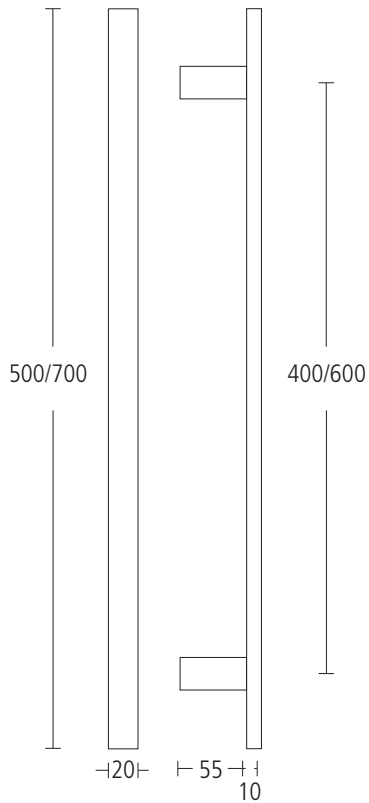
Pair, as above, with back to back fixing suitable for timber or glass doors

**SS1746**  
**MODRIC PULL HANDLE**  
**600MM CENTRES**

- Bolt through fixing
- Grade 316 satin stainless steel
- Hand finished

**SS1746BB**

Pair, as above, with back to back fixing suitable for timber or glass doors





**SS1750  
MODRIC PULL HANDLE  
400MM CENTRES**

- Bolt through fixing
- Grade 316 satin stainless steel
- Hand finished

**SS1750BB**

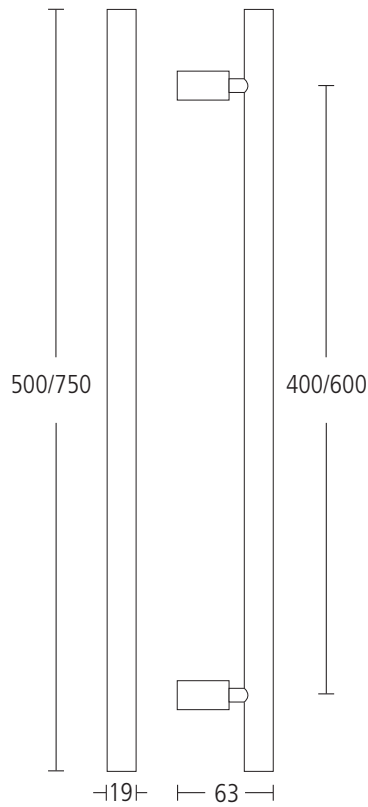
Pair, as above, with back to back fixing suitable for timber or glass doors

**SS1751  
MODRIC PULL HANDLE  
600MM CENTRES**

- Bolt through fixing
- Grade 316 satin stainless steel
- Hand finished

**SS1751BB**

Pair, as above, with back to back fixing suitable for timber or glass doors





**SS1760**  
**MODRIC PULL HANDLE**  
**400MM CENTRES**

- Bolt through fixing
- Grade 316 satin stainless steel
- Hand finished

**SS1760BB**

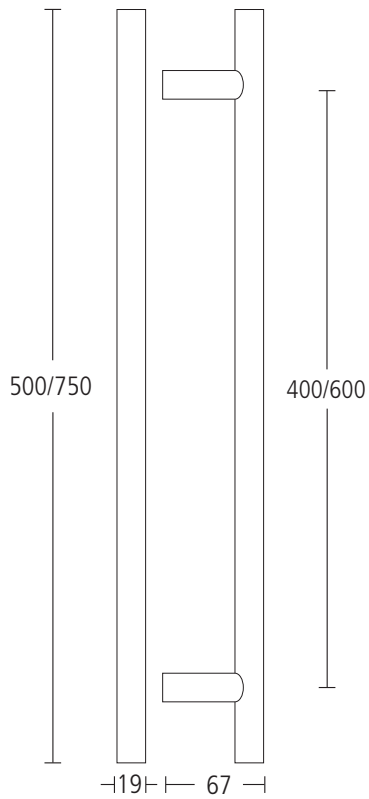
Pair, as above, with back to back fixing suitable for timber or glass doors

**SS1761**  
**MODRIC PULL HANDLE**  
**600MM CENTRES**

- Bolt through fixing
- Grade 316 satin stainless steel
- Hand finished

**SS1761BB**

Pair, as above, with back to back fixing suitable for timber or glass doors





**SS1770**  
**MODRIC PULL HANDLE**  
**400MM CENTRES**

- Bolt through fixing
- Grade 316 satin stainless steel
- Hand finished

**SS1770BB**

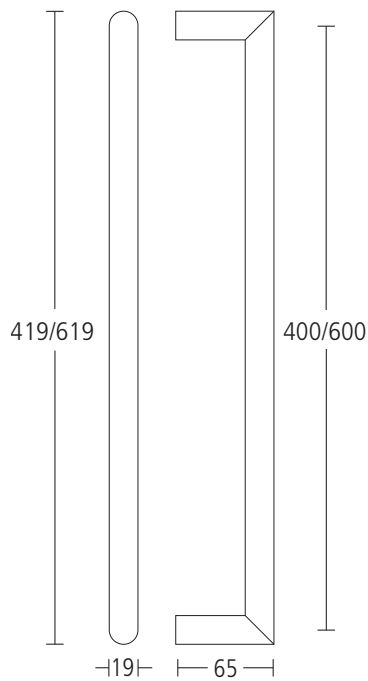
Pair, as above, with back to back fixing suitable for timber or glass doors

**SS1771**  
**MODRIC PULL HANDLE**  
**600MM CENTRES**

- Bolt through fixing
- Grade 316 satin stainless steel
- Hand finished

**SS1771BB**

Pair, as above, with back to back fixing suitable for timber or glass doors





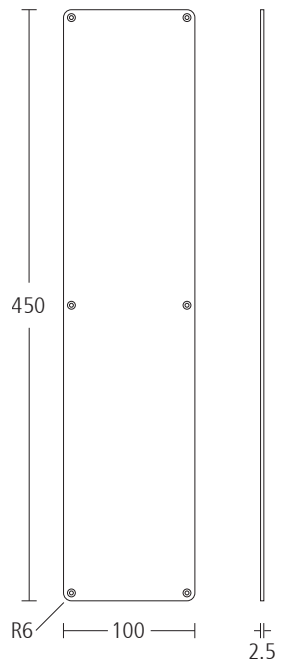




SS6802G

**MODRIC RADIUS PUSH PLATE**  
**450MM X 100MM X 2.5MM**

- Torx screw fixing
- Grade 316 satin stainless steel
- Hand finished

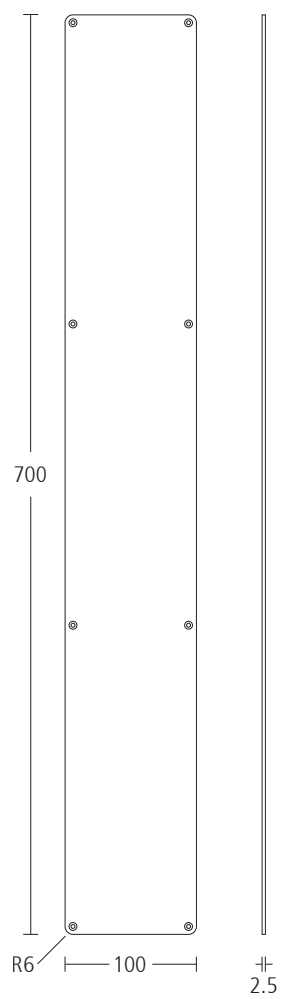


SS6802K

**MODRIC RADIUS PUSH PLATE**

**700MM X 100MM X 2.5MM**

- Torx screw fixing
- Grade 316 satin stainless steel
- Hand finished







## SS9281/6

### MODRIC UNIVERSAL CLOSING OVERHEAD DOOR CLOSER

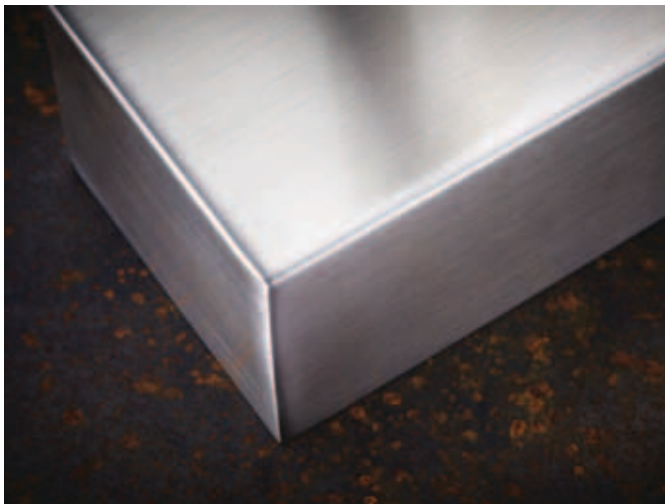
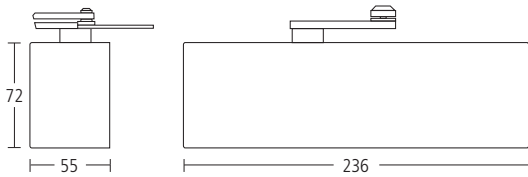
- Universal fixing (Fig 1 and Fig 6)
- Adjustable power 2-4 (Fig 1) and 1-3 (Fig 6)
- Adjustable closing speed with independent latch action
- Adjustable backcheck between angle of operation, 65°–180°
- Maximum door weight: 80kg (Fig1) / 60kg (Fig 6)
- Maximum door width: 1100mm (Fig 1) / 950mm (Fig 6)
- Independently tested to BS EN 1154  

4	8	4	2	1	1	4
---	---	---	---	---	---	---

 (Fig 1)
- Independently tested to BS EN 1154  

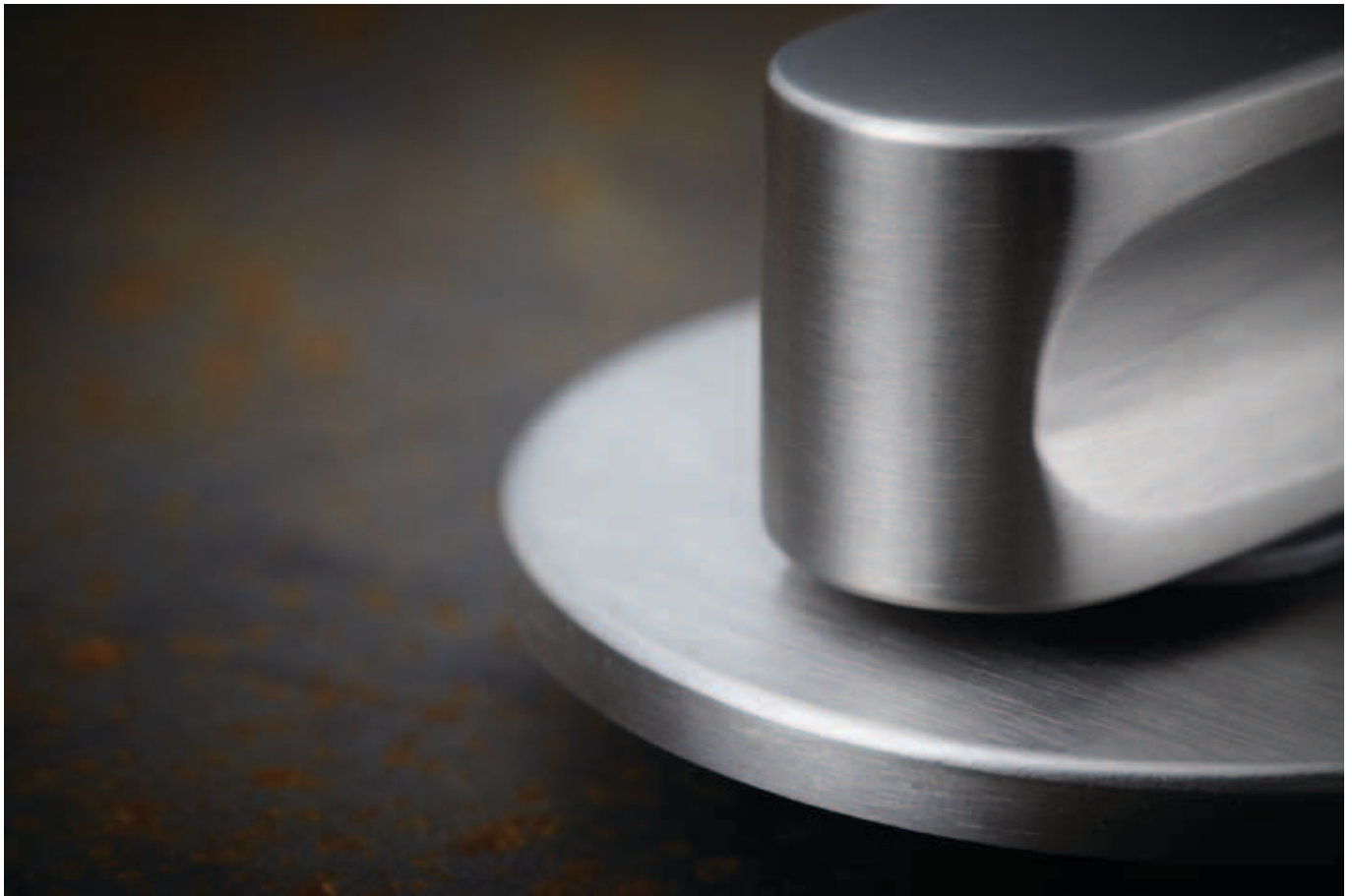
4	8	3	1	1	1	4
---	---	---	---	---	---	---

 (Fig 6)
- CE marked 0672-CPD-0225
- Certifire approved CF704
- Incorporated in successful fire tests and assessed to BS EN 1634-1 and BS 476 Pt 22 up to 120 minutes on timber doors and 240 minutes on metal doors
- 10 year guarantee



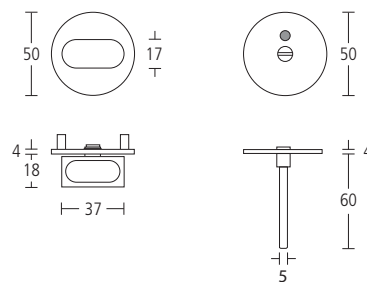






**SS771Q2529**  
**MODRIC WC TURN WITH**  
**INDICATOR RELEASE**

- Grade 316 satin stainless steel
- Hand finished
- Concealed fixing



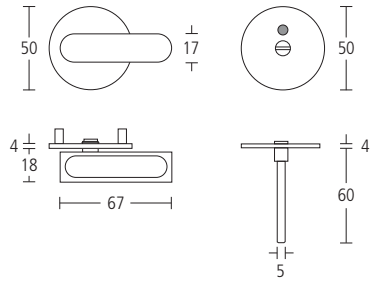




SS771Q2530

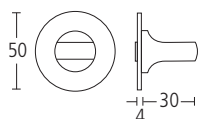
**MODRIC DISABLED WC TURN  
WITH INDICATOR RELEASE**

- Grade 316 satin stainless steel
- Hand finished
- Concealed fixing



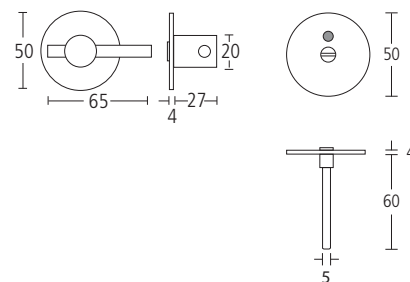
**SS771Q2531**  
**MODRIC WC TURN**

- Grade 316 satin stainless steel
- Hand finished
- Concealed fixing



**SS13010**  
**MODRIC WC TURN WITH**  
**INDICATOR RELEASE**

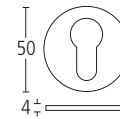
- Grade 316 satin stainless steel
- Hand finished
- Concealed fixing





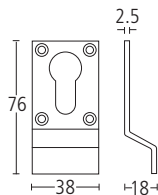
**SS796Q**  
**MODRIC EURO PROFILE**  
**CYLINDER ESCUTCHEON**

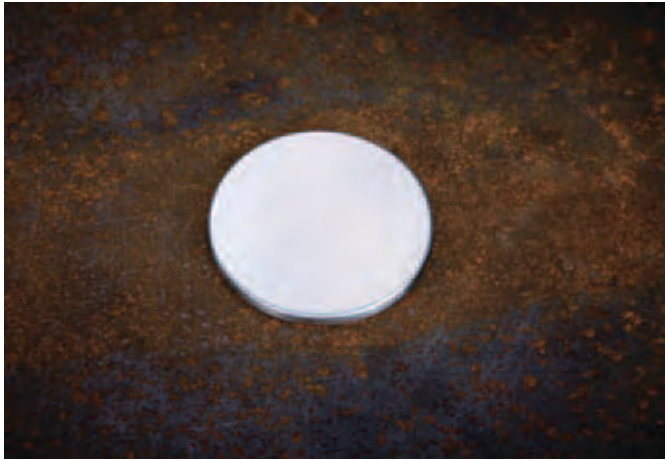
- Grade 316 satin stainless steel
- Hand finished
- Concealed fixing



**SS8**  
**MODRIC EURO PROFILE**  
**CYLINDER PULL**

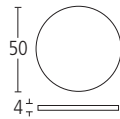
- Grade 316 satin stainless steel
- Hand finished
- Torx screw fixing





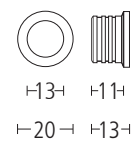
**SS761Q**  
**MODRIC BLANKING ROSE**

- Grade 316 satin stainless steel
- Hand finished
- Concealed fixing



**XX98580**  
**MODRIC BUDGET LOCK ESCUTCHEON**

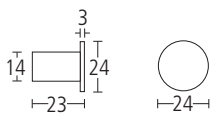
- Grade 316 satin stainless steel
- Hand finished





**SS6540**  
**MODRIC COAT HOOK**

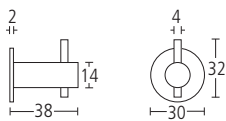
- Grade 316 satin stainless steel
- Hand finished
- Concealed fixing



**SS6541**

**MODRIC COAT HOOK**

- Grade 316 satin stainless steel
- Hand finished
- Concealed fixing

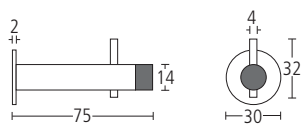




SS6542

## MODRIC BUFFERED COAT HOOK

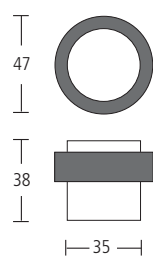
- Grade 316 satin stainless steel
- Hand finished
- Concealed fixing



SS2301

## MODRIC DOOR STOP

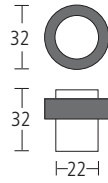
- Grade 316 satin stainless steel
- Hand finished
- Concealed fixing



## SS2302

### MODRIC DOOR STOP

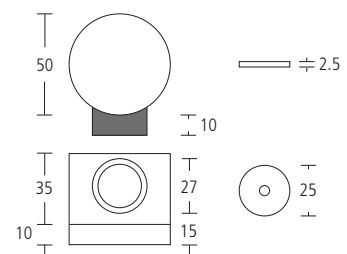
- Grade 316 satin stainless steel
- Hand finished
- Concealed fixing



## SS2304

### MODRIC MAGNETIC DOOR HOLDER

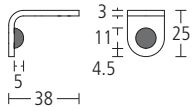
- Grade 316 satin stainless steel
- Hand finished
- Concealed fixing



## SS2309

### MODRIC ANGLE DOOR STOP

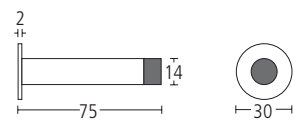
- Grade 316 satin stainless steel
- Hand finished
- Torx screw fixing



## SS2315

### MODRIC SKIRTING BUFFER

- Grade 316 satin stainless steel
- Hand finished
- Concealed fixing









**SS2540**  
**MODRIC CABINET**  
**PULL HANDLE**

- Grade 316 satin stainless steel
- Hand finished
- Bolt through fixing

**SS2541**  
**MODRIC CABINET**  
**PULL HANDLE**

- Grade 316 satin stainless steel
- Hand finished
- Bolt through fixing

**SS2542**  
**MODRIC CABINET**  
**PULL HANDLE**

- Grade 316 satin stainless steel
- Hand finished
- Bolt through fixing

**SS2543**  
**MODRIC CABINET**  
**PULL HANDLE**

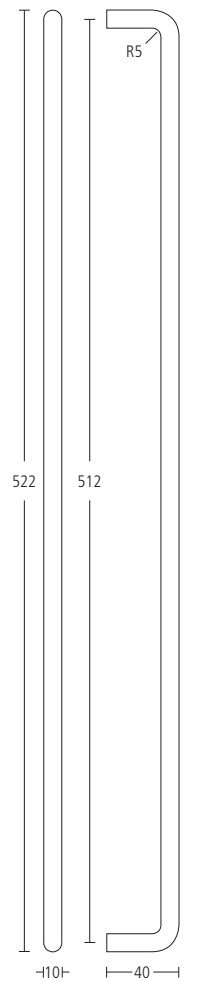
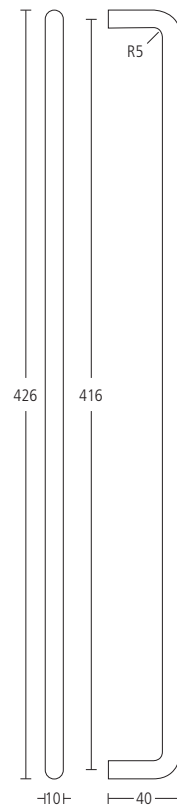
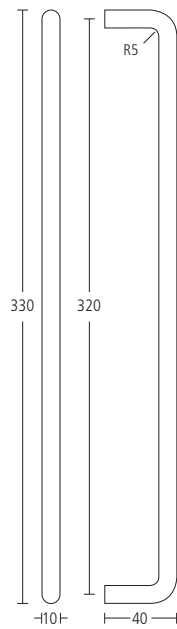
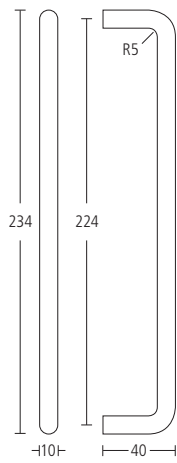
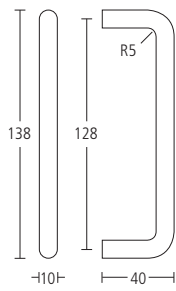
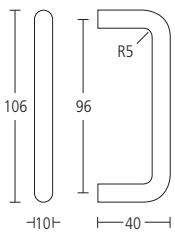
- Grade 316 satin stainless steel
- Hand finished
- Bolt through fixing

**SS2544**  
**MODRIC CABINET**  
**PULL HANDLE**

- Grade 316 satin stainless steel
- Hand finished
- Bolt through fixing

**SS2545**  
**MODRIC CABINET**  
**PULL HANDLE**

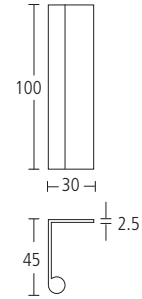
- Grade 316 satin stainless steel
- Hand finished
- Bolt through fixing





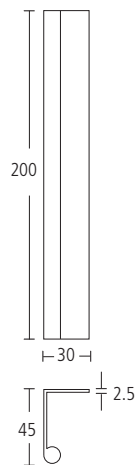
**XX1714/1S**  
**MODRIC 'LEDGE' PULL HANDLE**  
**100MM X 45MM**

- Simulated satin stainless steel
- Hand finished



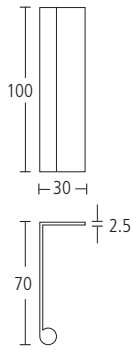
**XX1714/2S**  
**MODRIC 'LEDGE' PULL HANDLE**  
**200MM X 45MM**

- Simulated satin stainless steel
- Hand finished



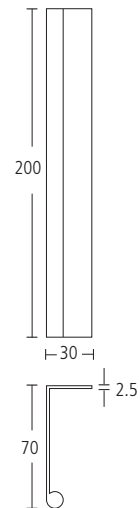
**XX1716/1S**  
**MODRIC 'LEDGE' PULL HANDLE**  
**100MM X 70MM**

- Simulated satin stainless steel
- Hand finished



**XX1716/2S**  
**MODRIC 'LEDGE' PULL HANDLE**  
**200MM X 70MM**

- Simulated satin stainless steel
- Hand finished



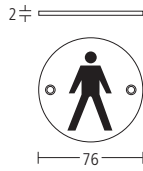




### SS8432

#### MODRIC 'MALE' SIGN

- Grade 316 satin stainless steel
- Torx screw fixing
- Hand finished



### SS8433

#### MODRIC 'FEMALE' SIGN

- Grade 316 satin stainless steel
- Torx screw fixing
- Hand finished



### SS8434

#### MODRIC 'UNISEX' SIGN

- Grade 316 satin stainless steel
- Torx screw fixing
- Hand finished



### SS8435

#### MODRIC 'DISABLED' SIGN

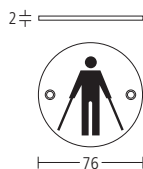
- Grade 316 satin stainless steel
- Torx screw fixing
- Hand finished



### SS8436

#### MODRIC 'AMBULANT' SIGN

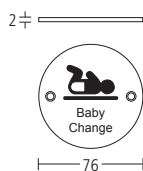
- Grade 316 satin stainless steel
- Torx screw fixing
- Hand finished



### SS8457

#### MODRIC 'BABY CHANGE' SIGN

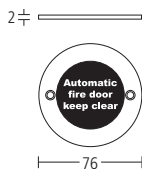
- Grade 316 satin stainless steel
- Torx screw fixing
- Hand finished



### SS8447

#### MODRIC 'AUTOMATIC FIRE DOOR KEEP CLEAR' SIGN

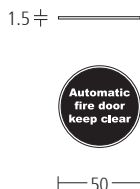
- Grade 316 satin stainless steel
- Torx screw fixing
- Hand finished
- Adheres to safety sign legislation BS 5499



### SS8447S

#### MODRIC 'AUTOMATIC FIRE DOOR KEEP CLEAR' SIGN

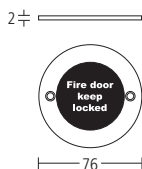
- Grade 316 satin stainless steel
- Self adhesive
- Hand finished
- Adheres to safety sign legislation BS 5499



### SS8448

#### MODRIC 'FIRE DOOR KEEP LOCKED' SIGN

- Grade 316 satin stainless steel
- Torx screw fixing
- Hand finished
- Adheres to safety sign legislation BS 5499



### SS8448S

#### MODRIC 'FIRE DOOR KEEP LOCKED' SIGN

- Grade 316 satin stainless steel
- Self adhesive
- Hand finished
- Adheres to safety sign legislation BS 5499

1.5 ÷



50



### SS8449

#### MODRIC 'FIRE DOOR KEEP SHUT' SIGN

- Grade 316 satin stainless steel
- Torx screw fixing
- Hand finished
- Adheres to safety sign legislation BS 5499

2 ÷



76



### SS8449S

#### MODRIC 'FIRE DOOR KEEP SHUT' SIGN

- Grade 316 satin stainless steel
- Self adhesive
- Hand finished
- Adheres to safety sign legislation BS 5499

1.5 ÷



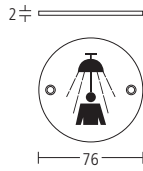
50



### SS8456

#### MODRIC 'SHOWER' SIGN

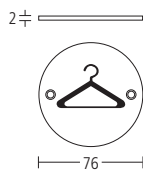
- Grade 316 satin stainless steel
- Torx screw fixing
- Hand finished



### SS8458

#### MODRIC 'CLOAKROOM' SIGN

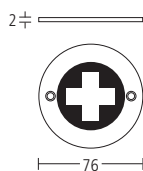
- Grade 316 satin stainless steel
- Torx screw fixing
- Hand finished



### SS8459

#### MODRIC 'FIRST AID' SIGN

- Grade 316 satin stainless steel
- Torx screw fixing
- Hand finished





modrio

Allgood would like to thank Cloud 9 Digital Design Ltd. ([www.c9dd.com](http://www.c9dd.com)) for their contribution to this brochure.

All information and details in this brochure are correct at time of going to press. However, Allgood plc reserves the right to change the product specifications without notice.

All dimensions are subject to production tolerances of  $\pm 1\text{mm}$ .

**@lgood** and **modrio** are registered trademarks.

© Allgood plc 2012

**@lgood**

t: 020 7387 9951

e: [info@allgood.co.uk](mailto:info@allgood.co.uk)

[www.allgood.co.uk](http://www.allgood.co.uk)

18 Holborn,  
London, EC1N 2LE

t: 020 7387 9951

f: 020 7380 1232

63-83 Brearley Street,  
Birmingham, B19 3NT

t: 0121 359 4415

f: 0121 359 5832

Warth Business Centre,  
Warth Road, Bury,  
Greater Manchester, BL9 9NB

t: 0161 834 6717

The Wright Business Centre,  
Glasgow, G33 4EL

t: 0141 773 6298

f: 0141 771 9569