

# HARLEQUIN

PRESS RELEASE S/S 2019

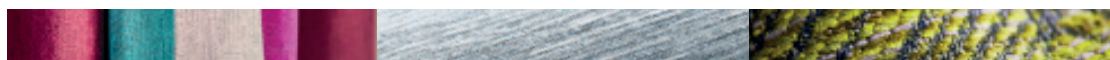


ATELIER • TEXTURES WALLS • HAMADA WEAVES



# HARLEQUIN

ATELIER • TEXTURES WALLS • HAMADA WEAVES



## INSPIRED BY URBAN POTTERY AND 1970's FASHION, HARLEQUIN LAUNCHES THREE NEW BOOKS FOR SS19

With its name meaning 'studio' Harlequin Atelier is a fabulous collection of eight prints, four weaves and one embroidery inspired by the techniques used in mid-century pottery studios. A variety of shapes combine with contemporary colours and painted glaze effects to create a compendium of statement and coordinating designs.

Glamorous yet considered, Atelier shares its studio style with a 1970's fashion vibe, as oversized foliage and flamboyant geo patterns sit alongside the textures and brush marks created by traditional ceramic painting methods.

Harlequin's lead designer Claire Greenfield says, "Our SS19 launch is a fabulous amalgamation of abstract techniques found within an artist's studio, juxtaposed with iconic fashion influences. Each of the collection's designs are hand painted using a variety of mediums such as ink and gouache to maintain a hand-crafted feel. Overlapping structural leaves, a dramatic landscape and interlinking shapes are just some of the collection's designs, which have been coloured throughout in a dynamic palette."

Atelier is complemented by Hamada Weaves, a tactile collection of six weaves (which are all suitable for upholstery) inspired by the textural elements found in pottery production. Strong greens, such as Emerald and Marine contrast beautifully with Denim, Sky and Charcoal as highlights of Burnt Orange and Paprika match the trend for warmer tones.

In addition, the launch of Harlequin's new Textured Walls book introduces 51 wide-width vinyl wallpapers across eight designs, each with different embosses and textures. Gravure printed and designed to look like fabric, Textured Walls can be used on all four walls to provide a harmonious style throughout the home, in addition to perfectly accompanying Atelier's feature fabrics.

The launch comprises three books: Atelier Prints & Weaves, Hamada Weaves and Textured Walls

To see the Harlequin collection in its entirety, please visit [stylelibrary.com/harlequin](http://stylelibrary.com/harlequin)

[#atelierbyharlequin](https://twitter.com/atelierbyharlequin) [#hamadabyharlequin](https://twitter.com/hamadabyharlequin) [#texturedwallsbyharlequin](https://twitter.com/texturedwallsbyharlequin) are available via a network of stockists nationally and internationally.

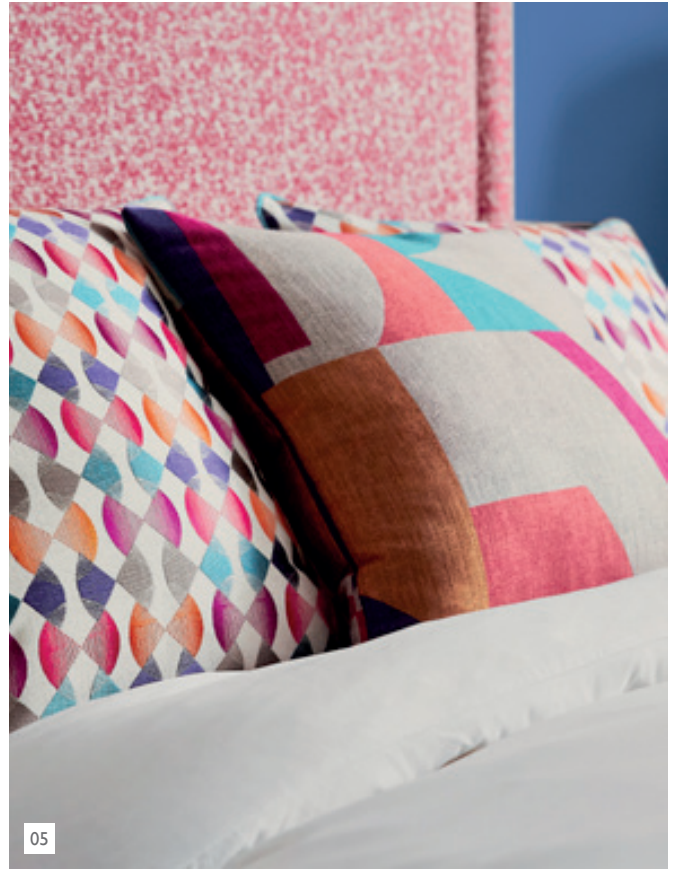
To find your nearest, go to FIND A RETAILER on [www.stylelibrary.com](http://www.stylelibrary.com)

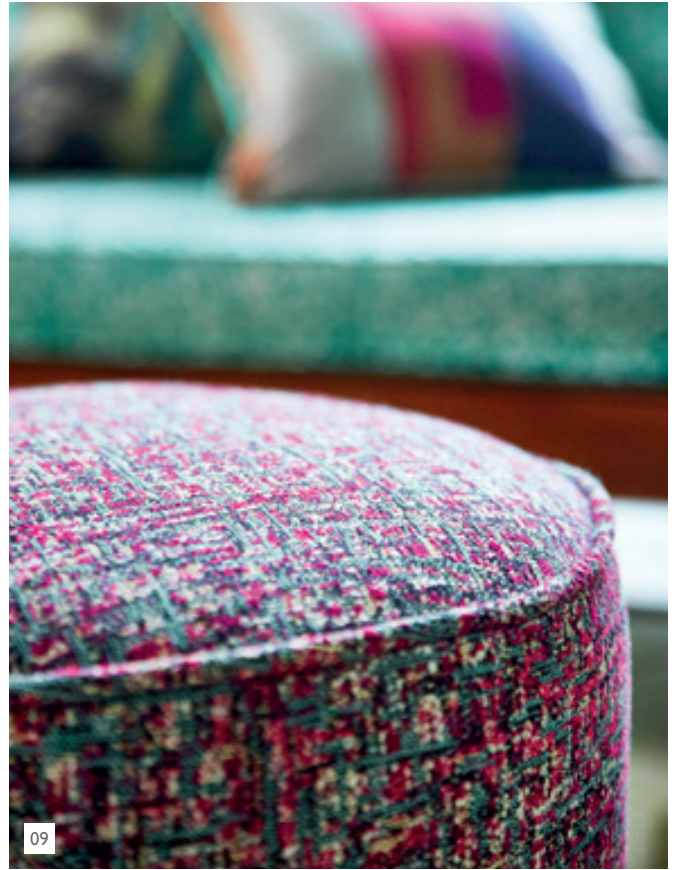
ALL PRINTS AND WALLPAPERS DESIGNED AND PRINTED IN THE UK

[STYLELIBRARY.COM/HARLEQUIN](http://STYLELIBRARY.COM/HARLEQUIN)



















21



22



23





25



26

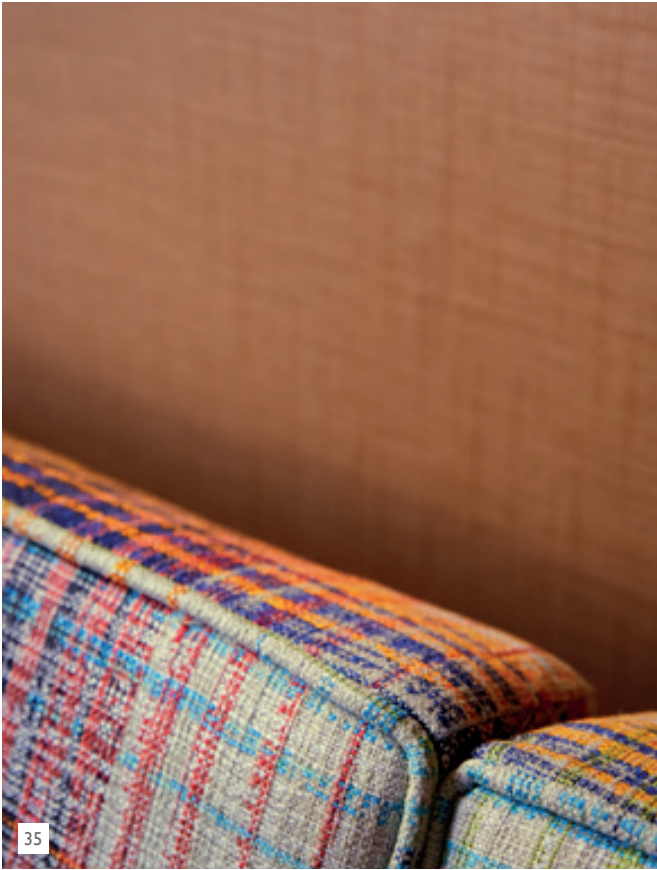


27











39



40



41







## ATELIER PRINTS

With its name meaning 'studio' Harlequin Atelier is a fabulous collection of eight prints inspired by the techniques used in mid-century pottery studios. A variety of shapes combine with stylish colours and painted glaze effects to create a compendium of statement designs.

Glamorous yet considered, Atelier shares its studio style with a 1970's fashion vibe, as oversized foliage and flamboyant geo patterns sit alongside the textures and brush marks created by traditional ceramic painting methods.

Perfect for upholstery, the complementary Hamada Weave book is also available.

### TOSHIKO

This easy to live with palm leaf design from Harlequin Atelier is drawn with a loose hand, showing lovely brush marks across an open base cloth.

Available in four colourways: Saffron/Charcoal/Wasabi, Emerald/Zest/Marine, Paprika/Teal/Olive and Ink/Sky/Stone

### ATELIER

The lead design of this collection, Atelier was inspired by a vintage scarf from the 1970's. Drawn by hand, these bold geometric textural shapes are coloured in confident tones.

Atelier is ideal for drapery and upholstery.

Available in three colourways: Saffron/Charcoal/Wasabi, Emerald/Zest/Marine and Ink/Sky/Stone

### RIE

An excellent coordinate, this design works beautifully well across all colour groups. With a linen look and lovely texture, Rie from Harlequin is a freehand print with hand drawn edges, painted to create an interlinking leaf effect.

Available in four colourways: Charcoal, Ink, Ochre and Stone

### MINAKO VELVET

Introduce an element of drama with Harlequin's Minako Velvet. Overlapping inkwork is layered to create a landscape scene that's perfect for drapery and upholstery.

Available in three colourways: Emerald/Zest/Marine, Gold/Charcoal and Indigo/Fuchsia/Mandarin

### EXUBERANCE

Inspired by the successful wallpaper of the same name, Exuberance from Harlequin is an abstract floral originally designed on corrugated paper to create a lined look. Exuberance is printed on a luxurious satin and displays a wonderful high sheen.

Available in two colourways: Ochre/Charcoal and Teal/Fuchsia/Mandarin

### CALCINE

Lovely long horizontal brush marks create three bold vertical stripes in this great colour carrier from Harlequin Atelier. A useful print from which to coordinate accent colours, this design really brings a scheme together.

Available in three colourways: Emerald/Zest/Marine, Paprika/Teal/Olive and Teal/Fuchsia/Mandarin

### KANJIRO

Like an artist's palette, Kanjiro is an original design from the Harlequin studio with abstract brush strokes representative of an artist testing out techniques on this dual-purpose fabric, which is ideal for drapes and upholstery.

Available in one colourway: Ochre/Charcoal/Stone

## ATELIER WEAVES

With its name meaning 'studio' Harlequin Atelier is a fabulous collection of four weaves and one embroidery, inspired by the techniques used in mid-century pottery studios. A variety of shapes combine with stylish colours and painted glaze effects to create a compendium of statement designs.

Glamorous yet considered, Atelier shares its studio style with a 1970's fashion vibe, as oversized foliage and flamboyant geo patterns sit alongside the textures and brush marks created by traditional ceramic painting methods.

### BODEGA

The featured design from Harlequin's Atelier collection, this luxurious geometric weave displays a lovely texture as its iridescent elements shimmer in the light.

Available in three colourways: Indigo/Fuchsia/Mandarin, Ink/Marine/Ochre and Saffron/Charcoal/Wasabi

### CELADON

Inspired by the resurgence of popular palms, Celadon from Harlequin is an overlapping structural leaf shape, layered throughout to bring depth and an almost 3D effect to this intriguing weave.

Available in three colourways: Marine/Plum, Emerald/Litchee and Saffron/Charcoal

### MINAKO

Introduce an element of drama with Harlequin's wide-width Minako sheer voile. Overlapping inkwork is layered to create a stunning landscape theme.

The complementary Minako Velvet is also available.

Available in three colourways: Marine/Ink, Gold/Charcoal and Paprika/Plum

### DELPHIS

Layered brush marks create this bold design, inspired by the abundance of textures found within mid-century German pottery.

Available in two colourways: Charcoal/Gold and Ink/Sky

### MAIOLICA

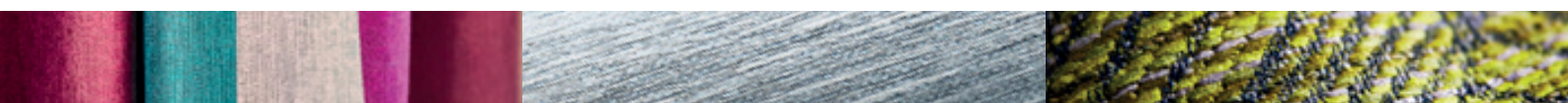
Maiolica is a neat, small scale geometric with an abundance of highlight colours. The embroidered ombre effect almost tricks the eye into seeing 3D diamond shapes within the overall design.

Available in three colourways: Fuchsia/Mandarin/Indigo, Paprika/Teal/Ochre and Ink/Wasabi/Gold

### MALWA

Malwa from Harlequin is an excellent coordinator displaying a lovely horizontal stripe woven to represent a painted brush mark.

Available in one colourway: Gold/Slate



## HAMADA WEAVES

Hamada Weaves is a tactile collection of six upholstery weaves inspired by the textural elements found in pottery production. Strong greens, such as Emerald and Marine contrast beautifully with Denim, Sky and Charcoal as highlights of Burnt Orange and Paprika match the trend for warmer tones. Sharing its art studio style with a 1970's fashion vibe, Hamada's textural stripes, subtle geos and 'check mate' plaids sit alongside inspiration drawn from traditional ceramic painting methods.

Hamada Weaves complement perfectly with Harlequin Atelier Weaves & Prints and Textured Walls.

### HAMADA

Celebrating the 'check mate' trend, this fabulous large-scale plaid displays a wonderful blend of colours, from blue/green tones through to bursts of pink.

Available in four colourways: Fuchsia/Marine, Denim/Ochre, Emerald/Zest and Charcoal/Gold

### NICKEL

A lovely, heavily textured upholstery fabric, Nickel from Harlequin is available in six striking colourways. The weave construction brings coloured yarns to the top of the design, revealing a glorious range of accent colours.

Available in six colourways: Fuchsia/Marine, Denim/Ochre, Emerald/Marine, Bottle Green/Zest, Teal/Rust and Charcoal/Steel

### LIZELLA

This incredibly versatile Harlequin weave features a small-scale horizontal stripe and a broad range of highlight colours – the perfect coordinate.

Available in five colourways: Fuchsia/Marine, Marine/Zest, Denim/Russet, Mandarin/Teal and Gold/Slate

### NUKA

Contrasting light and dark, Nuka's horizontal stripes in a range of highlight colours introduce a contemporary feel to any interior scheme.

Available in four colourways: Fuchsia/Coral/Marine, Ochre/Denim/Sky, Mandarin/Teal/Aqua and Charcoal/Slate/Raffia

### MISHIMA

With a mid-century vibe, this lovely geo echoes the shapes found in Harlequin's Atelier collection. Space dyed yarns draw out highlight colours, providing a contrast against the design's natural ground.

Available in five colourways Denim, Zest, Paprika, Charcoal and Raffia

### TEESHA

Featuring two contrasting yarns, one natural and one with a slight shine, Teesha's wide array of colours are excellent coordinators...with each other and the room!

Available in six colourways: Fuchsia, Slate, Emerald, Paprika, Tortoiseshell and Jute

## TEXTURED WALLS

Harlequin's Textured Walls book introduces 51 wide-width vinyl wallpapers across eight designs, each with different embosses and textures. Gravure printed in colours such as Biscotti, Slate and Rose and designed to display a fabric like appearance, Textured Walls can be used on all four walls to provide a harmonious style throughout the home. Alternatively, pair with Harlequin fabrics to complete the look.

### PARAPET

With an embossed linen look and metallic lines, this striking large scale geometric wallpaper has an abstract architectural feel.

Available in eight colourways: Biscotti, Pebble, Dove, Indigo, Emerald, Rose, Slate and Graphite

### VAULT

Cubes, diamonds or hexagons? Let this small-scale geometric wallpaper from Harlequin trick your eye with its multitude of interlinking shapes. Softly embossed with a metallic design.

Use Vault as a feature wall alongside Lint, its coordinating plain.

Available in eight colourways: Sesame, Maize, Dove, Nickel, Seaglass, Stone, Nude and Rust

### LINT

A beautiful textural design, Lint is the coordinating plain for the Harlequin Vault wallpaper: Smart and graphic, Lint is a lovely paper in its own right or when paired with Vault.

Available in eight colourways: Sesame, Maize, Dove, Nickel, Seaglass, Stone, Nude and Rust

### CHRONICAL

Available in an array of 10 wonderful colours, Chronicle from Harlequin is a fabulously versatile textural plain. With the appearance of tiny, stitched highlights, this matt wallpaper has a delicate horizontal stripe and lovely movement.

Available in 10 colourways: Sand, Straw, Linen, Denim, Emerald, Cloud, Nude, Eggshell, Mushroom and Elephant

### MANSA

Harlequin's Mansa wallpaper displays a neat basket weave look across a neutral colour palette. Metallic highlights bring a subtle glamour to this textural design.

Available in five colourways: Sesame, Walnut, Dove, Pebble and Nude

### LISLE

With its grass cloth feel, Lisle is a 'go to' wallpaper for Harlequin texture, with metallic highlights blended throughout the design's horizontal stripes.

Available in five colourways: Driftwood, Pumice, Carbon, Shale and Linen

### PERPETUA

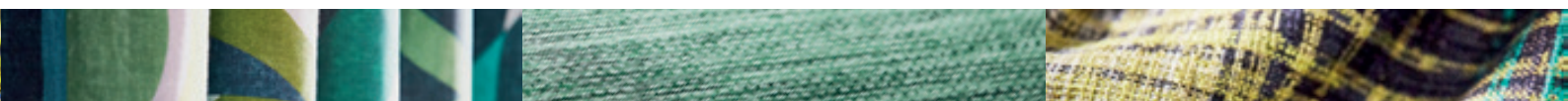
A simple wallpaper with a subtle vertical strié, Perpetua is a lovely softly coloured design which displays a slight texture.

Available in five colourways: Maize, Dove, Breeze, Seaglass and Seal

### COMMIX

Commix from Harlequin is a small-scale interlocking geometric wallpaper with metallic highlights gently shimmering across a textural ground.

Available in two colourways: Breeze and Seal



## IMAGE CAPTIONS

- 1 **CURTAINS:** Bodega 132868 **SOFA:** Teesa 132914 **LEFT CHAIR:** Tresillo Velvets 131988 **RIGHT CHAIR:** Zoffany Birodo 332418 **Stool:** Nickel 132888 **CUSHIONS L-R:** Bodega 132868, Celadon 132871, Bodega 132868, Celadon 132871, Teesha 132914, Maiolica 132868
- 2 **CURTAINS:** Toshiko 120791 **BLIND:** Rie 120799 **PAINT:** Zoffany Velvet Blue **CHAIR:** Tresillo Velvets 132004 **CUSHION:** Zoffany Birodo Velvet 332419
- 3 **CURTAINS:** Calcine 120807 **PAINT:** Sanderson Yacht Blue Light **HEADBOARD:** Teesha 132912 **Stool:** Nuka 132902 **BED THROW:** Tresillo Velvets 131989 & Zoffany Birodo 332418 **CUSHIONS L-R:** Maiolica 132879, Bodega 132868, Maiolica 132879
- 4 **CURTAINS:** Calcine 120807 **CHAIR:** Lizella 132895
- 5 **PAINT:** Sanderson Yacht Blue **HEADBOARD:** Teesha 132912 **CUSHIONS L-R:** Maiolica 132879, Bodega 132868, Maiolica 132879
- 6 **STOOL:** Nuka 132902
- 7 **BLIND:** Maiolica 132879
- 8 **SOFA:** Teesha 132914 **CUSHION L-R:** Celadon 132871, Bodega 132868
- 9 **STOOL:** Nickel 132888 **CUSHION L-R:** Celadon 132871, Bodega 132868
- 10 **CURTAINS:** Bodega 132868 **SOFA:** Teesha 132914 **CUSHION L-R:** Nickel 132888, Teesha 132914
- 11 **CURTAINS:** Celadon 132871
- 12 **CURTAINS:** Celadon 132871 **SOFA:** Teesha 132914 **CUSHIONS L-R:** Celadon 132871, Bodega 132868, Bodega 132868
- 13 **CURTAINS:** Minako 132874 **SOFA:** Minako Velvet 120800 **CUSHION:** Zoffany Birodo Velvet 332418
- 14 **CURTAIN:** Minako 132871 **SOFA:** Minako Velvet 120800
- 15 **CURTAIN:** Minako 132871
- 16 **WALLPAPER:** Lisle Carbon 112116 **CHAIR:** Tresillo Velvets 132004
- 17 **CHAIR:** Nuka 132903 **CUSHION:** Teesha 132913
- 18 **CURTAINS:** Delphis 132878 **SOFA:** Nickel 132889 **CUSHION:** Calcine 120806
- 19 **SOFA:** Nickel 132883 **PAINT:** Zoffany Velvet Blue **CUSHION:** Calcine 120806
- 20 **CURTAINS:** Delphis 132878 **CHAIR:** Nuka 132903
- 21 **CURTAINS:** Delphis 132878 **PAINT:** Zoffany Velvet Blue **SOFA:** Nickel 132889 **LEFT CHAIR:** Nuka 132903 **RIGHT CHAIR:** Tresillo Velvet 132004 **CUSHION L-R:** Atelier 120795, Teesha 132915, Calcine 120806
- 22 **CURTAINS:** Delphis 132878 **PAINT:** Zoffany Velvet Blue **SOFA:** Nickel 132889 **CUSHIONS L-R:** Teesha 132915, Teesha 132913, Mishima 132911, Hamada 132887, Teesha 132915, Nickel 132889
- 23 **SOFA:** Nickel 132889 **CUSHIONS L-R:** Atelier 120795, Teesha 132915
- 24 **CURTAINS:** Atelier 120794 **DINING CHAIR:** Zoffany Curzon 331096 **Cushion:** Celadon 132872
- 25 **CURTAIN:** Atelier 120794
- 26 **CHAIR:** Zoffany Curzon 331096 **CUSHION:** Toshiko 120790
- 27 **CURTAINS:** Atelier 120794 **DINING CHAIRS:** Zoffany Curzon 331906 & Momentum Velvets 132206
- 28 **WALLPAPER:** Perpetua 112123 **PAINT:** Zoffany Velvet Blue **CHAIR:** Otaka 132832
- 29 **WALLPAPER:** Perpetua 112123
- 30 **CURTAINS:** Delphis 132878 **PAINT:** Zoffany Velvet Blue **SOFA:** Nickel 132889 **CUSHIONS L-R:** Hamada 132886, Mishima 132908, Teesha 132914, Mishima 132908, Nickel 132891
- 31 **PAINT:** Zoffany Velvet Blue **SOFA:** Nickel 132889 **CUSHIONS L-R:** Hamada 132886, Mishima 132908, Teesha 132914, Mishima 132908
- 32 **CURTAINS:** Atelier 120794 **CHAIR:** Zoffany Curzon 331906 **CUSHION:** Hamada 132886
- 33 **SOFA:** Nickel 132889 **CUSHION:** Hamada 132886, Mishima 132908
- 34 **WALLPAPER:** Lint 112098 **SOFA:** Hamada 132884 **CUSHION:** Zoffany Birodo 332419
- 35 **WALLPAPER:** Lint 112098 **SOFA:** Hamada 132884
- 36 **WALLPAPER:** Mansa 112112
- 37 **ROLLS (TOP TO BOTTOM):** Lint 112098, Vault 112084, Commix 112125, Lint 112103, Lisle 112114
- 38 **WALLPAPER:** Lint 112098 **SOFA:** Hamada 132884
- 39 **FABRIC:** Malwa 132882431
- 40 **WALLPAPER:** Nickel 112086
- 41 **CURTAINS:** Malwa 132882 **PAINT:** Sanderson Kent Grey **SOFA:** Momentum Velvets 132179 **CUSHIONS L-R:** Teesha 132917, Hamada 132887
- 42 **CURTAINS:** Malwa 132882 **WALLPAPER:** Nickel 112086 **CHAIR:** Otaka 132832 **CUSHION:** Hamada 132887
- 43 **CURTAINS:** Kanjiro 120808 **BLIND:** Lizella 132900 **WALLPAPER:** Commix 112125 **PAINT:** Sanderson Greige Light **DINING CHAIRS:** Mishima 132910
- 44 **CURTAINS:** Exuberance 120803 **PAINT:** Sanderson Greige Light **DINING CHAIRS:** Mishima 132910
- 45 **CURTAINS:** Kanjiro 120808
- 46 **WALLPAPER:** Commix 112125
- 47 **CURTAINS:** Kanjiro 120808 **DINING CHAIRS:** Mishima 132910
- 48 **WALLPAPER:** Parapet 112078
- 49 **CURTAINS:** Bodega 132868





## CONTACT INFORMATION

For further information: [www.stylelibrary.com/Harlequin](http://www.stylelibrary.com/Harlequin)

To find your nearest stockist: [www.stylelibrary.com](http://www.stylelibrary.com)

### Press Office

Email: [press@stylelibrary.com](mailto:press@stylelibrary.com)

Tel: +44 (0) 1895 221005

### Style Library Head Office

Chalfont House

Oxford Road

Denham

UB9 4DX

Tel: +44 (0) 20 3457 5862

### Consumer and Retail Trade Enquiries

Email: [enquiries@stylelibrary.com](mailto:enquiries@stylelibrary.com)

### Style Library Contract – [www.stylelibrarycontract.com](http://www.stylelibrarycontract.com)

Email: [enquiries@stylelibrarycontract.com](mailto:enquiries@stylelibrarycontract.com)

Tel: +44 (0) 1895 221050

### Style Library Showroom

Design Centre Chelsea Harbour; First Floor, South Dome

Lots Road,

London, SW10 0XE

Tel: +44 (0) 20 3903 3700

Email: [showroom@stylelibrary.com](mailto:showroom@stylelibrary.com)

# HARLEQUIN